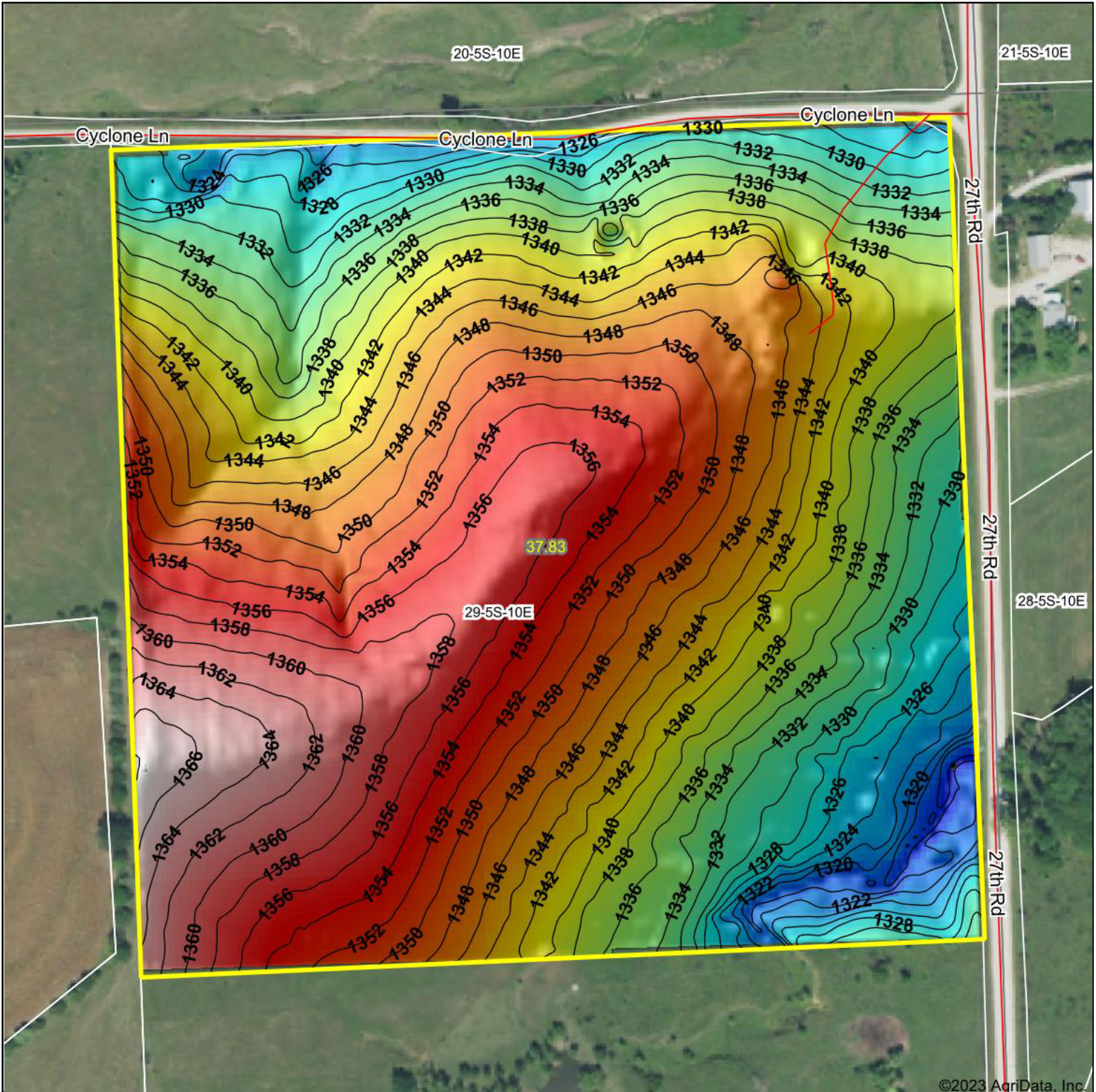
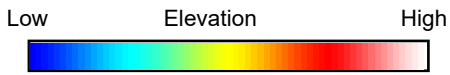


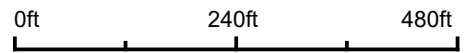
Topography Hillshade



©2023 AgriData, Inc.



Source: USGS 3 meter dem



Interval(ft): 2

Min: 1,313.9

Max: 1,368.3

Range: 54.4

Average: 1,343.5

Standard Deviation: 11.45 ft



8/14/2023

29-5S-10E
Marshall County
Kansas

Boundary Center: 39° 35' 36.3, -96° 18' 59.39



Maps Provided By:



© AgriData, Inc. 2023 www.AgriDataInc.com

Field borders provided by Farm Service Agency as of 5/21/2008