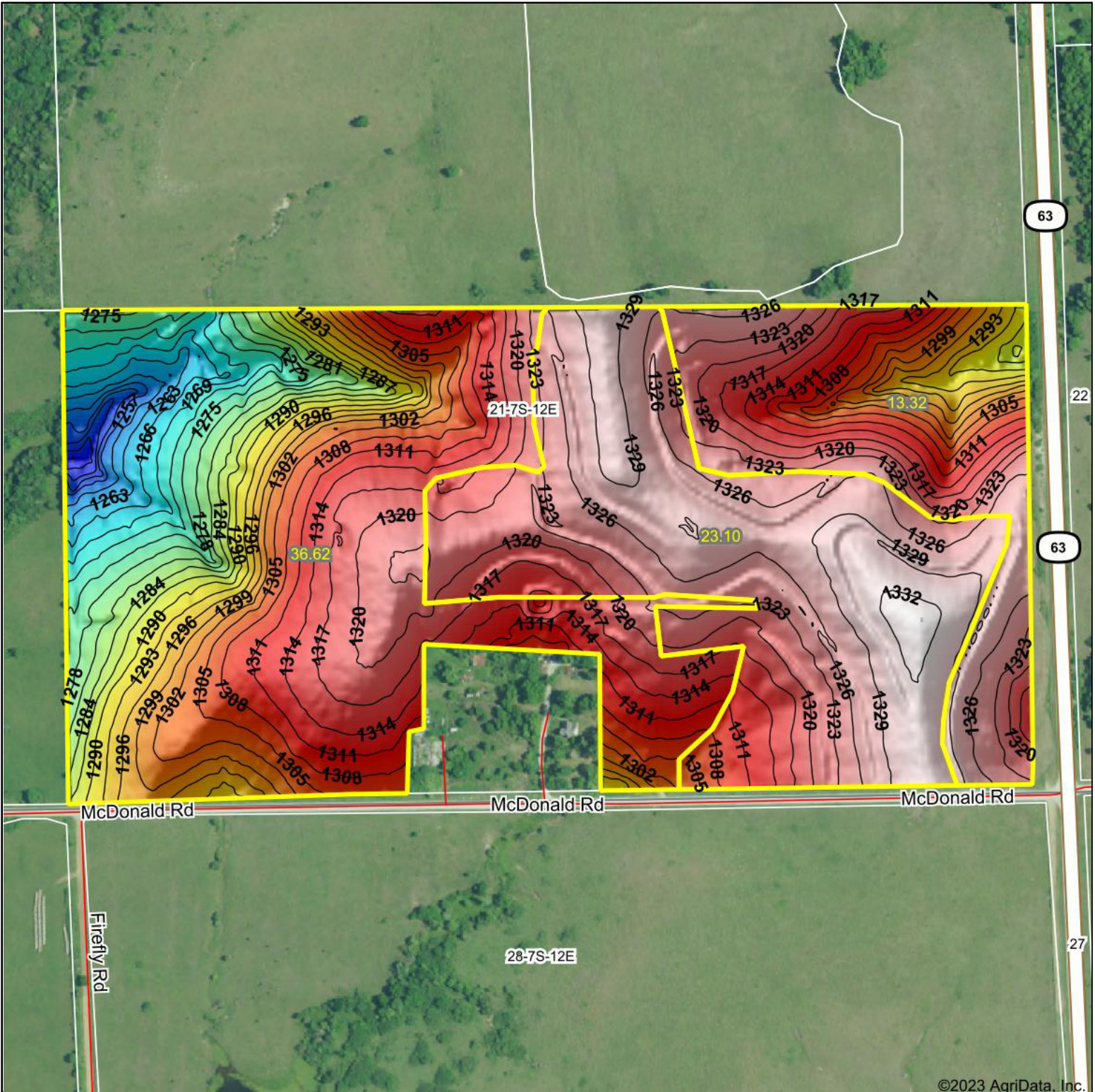


Topography Hillshade



<p>Low Elevation High</p>	<p>Source: USGS 3 meter dem Interval(ft): 3 Min: 1,245.9 Max: 1,333.0 Range: 87.1 Average: 1,309.1 Standard Deviation: 19.13 ft</p>	<p>0ft 418ft 836ft</p> <p>21-7S-12E Pottawatomie County Kansas 7/26/2023 Boundary Center: 39° 25' 19.51, -96° 4' 38.26</p>
---------------------------	---	--



Maps Provided By:



© AgriData, Inc. 2023 www.AgriDataInc.com

Field borders provided by Farm Service Agency as of 5/21/2008