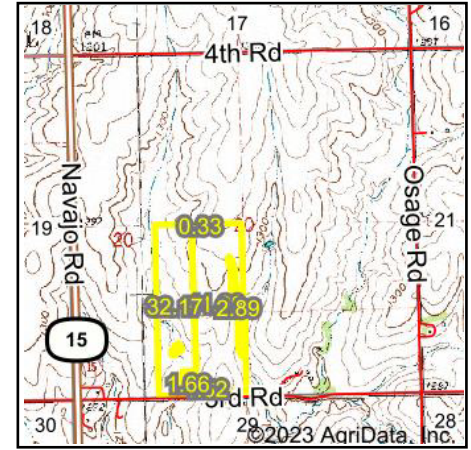
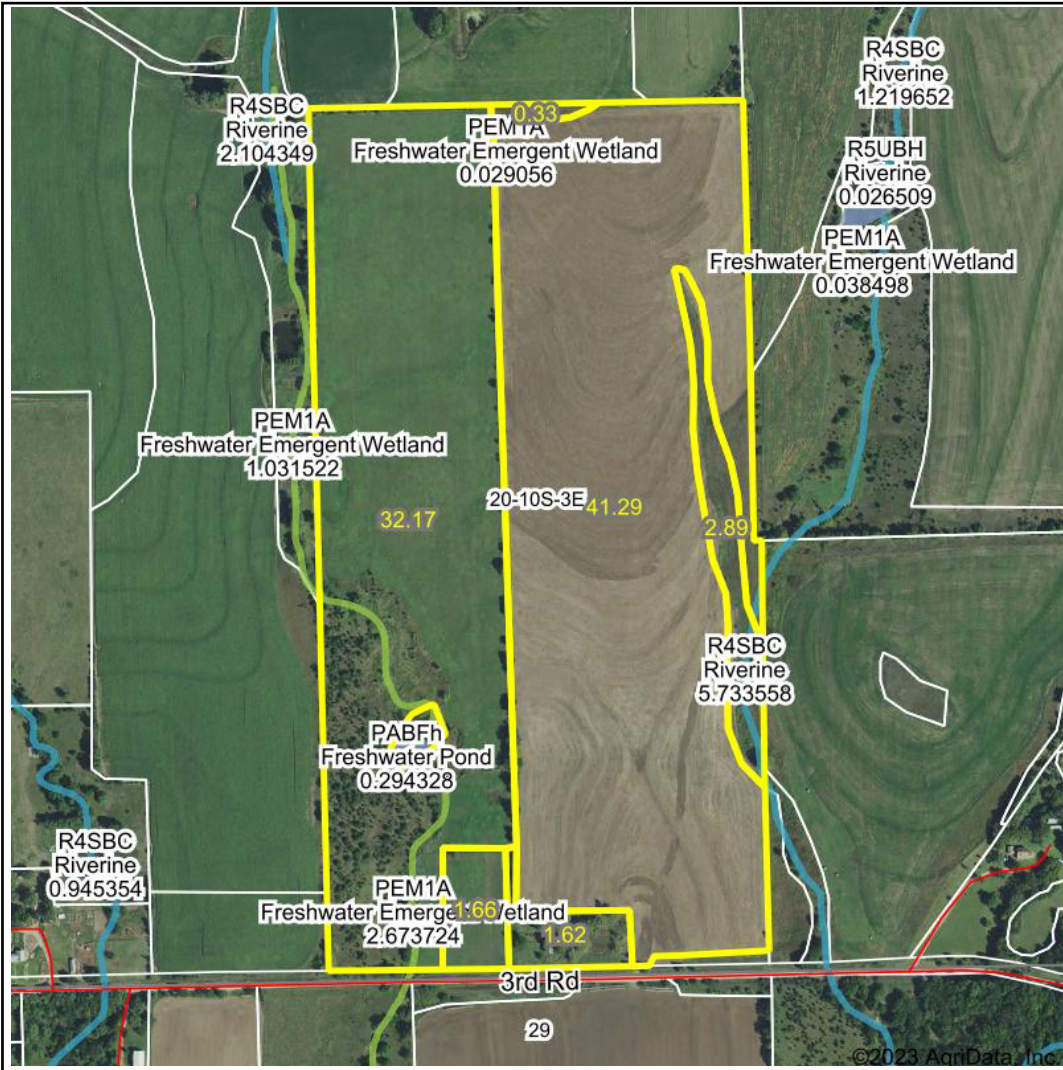


# Wetlands Map



**State:** Kansas  
**Location:** 20-10S-3E  
**County:** Clay  
**Township:** Gill  
**Date:** 6/28/2023



Maps Provided By:



© AgriData, Inc. 2023 [www.AgriDataInc.com](http://www.AgriDataInc.com)



0ft 671ft 1341ft

Classification Code	Type	Acres
PEM1A	Freshwater Emergent Wetland	0.60
R4SBC	Riverine	0.28
PABFh	Freshwater Pond	0.13
Total Acres		1.01

Data Source: National Wetlands Inventory website. U.S. DoI, Fish and Wildlife Service, Washington, D.C. <http://www.fws.gov/wetlands/>