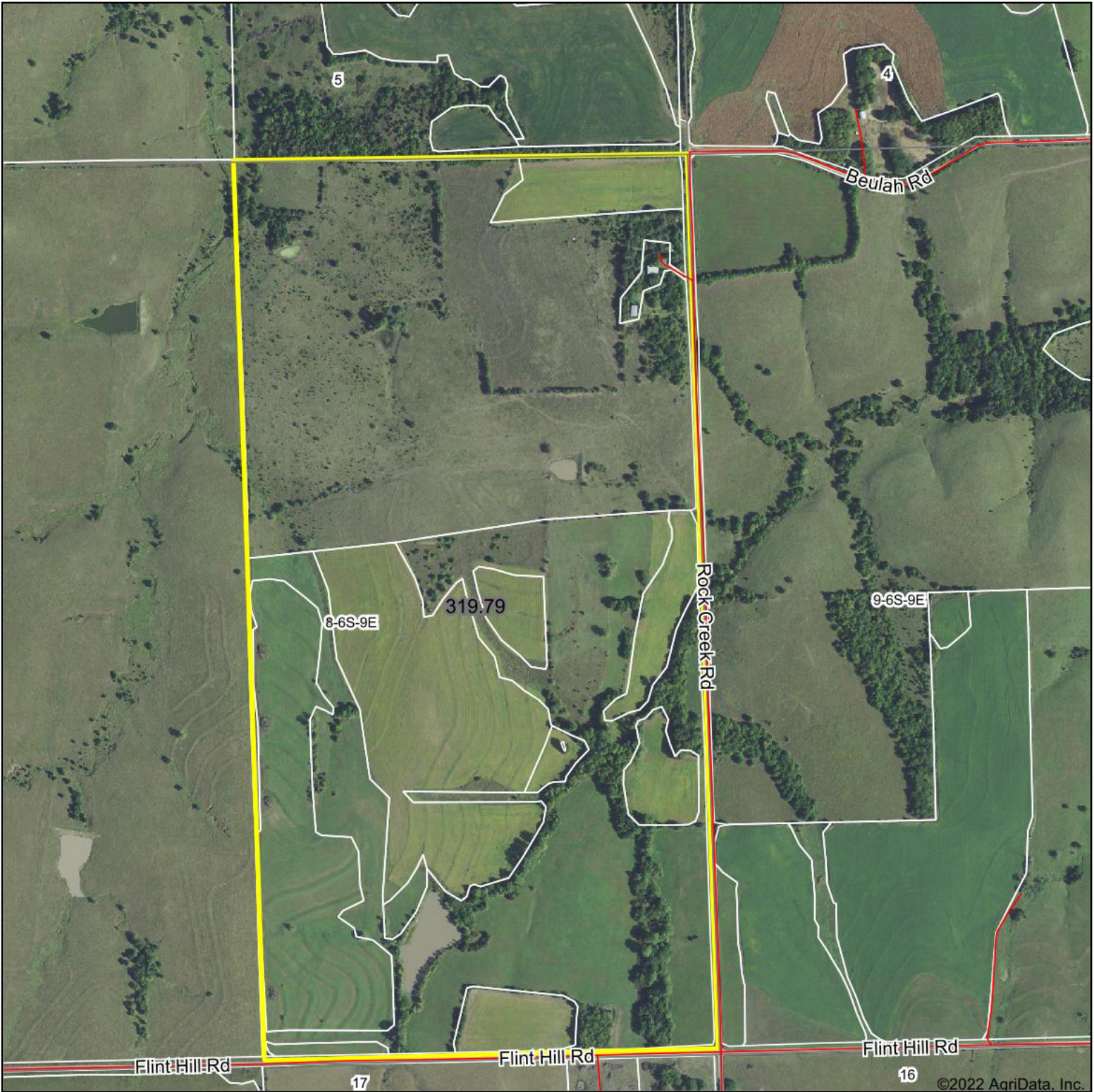
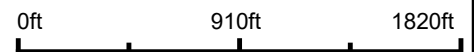


Aerial Map



Midwest Land
and Home

Map Center: 39° 32' 42.44, -96° 25' 45.05



Maps Provided By:
 **surety**
CUSTOMIZED ONLINE MAPPING
© AgriData, Inc. 2021 www.AgriDataInc.com

8-6S-9E
Pottawatomie County
Kansas



3/15/2022

Field borders provided by Farm Service Agency as of 5/21/2008.