

Welcome Home!



805 ALSTON STREET, MARYSVILLE, KS



PROPERTY FEATURES



Four



3 Car Garage with Loft



Four & a Half



0.53 Acre Corner Lot



Move-In Ready



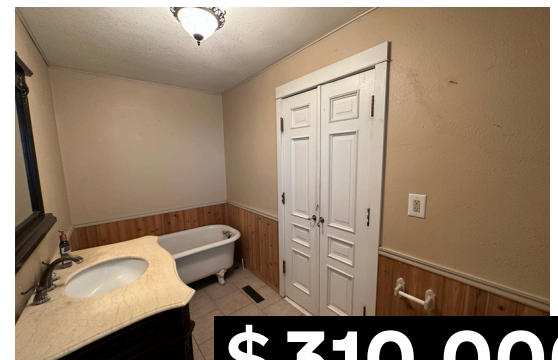
Large Yard



Spacious with Lots of Storage



Covered Front Porch



\$310,000

Jessica Leis, Broker



785.562.7817



jessica@midwestlandandhome.com



www.MidwestLandandHome.com

