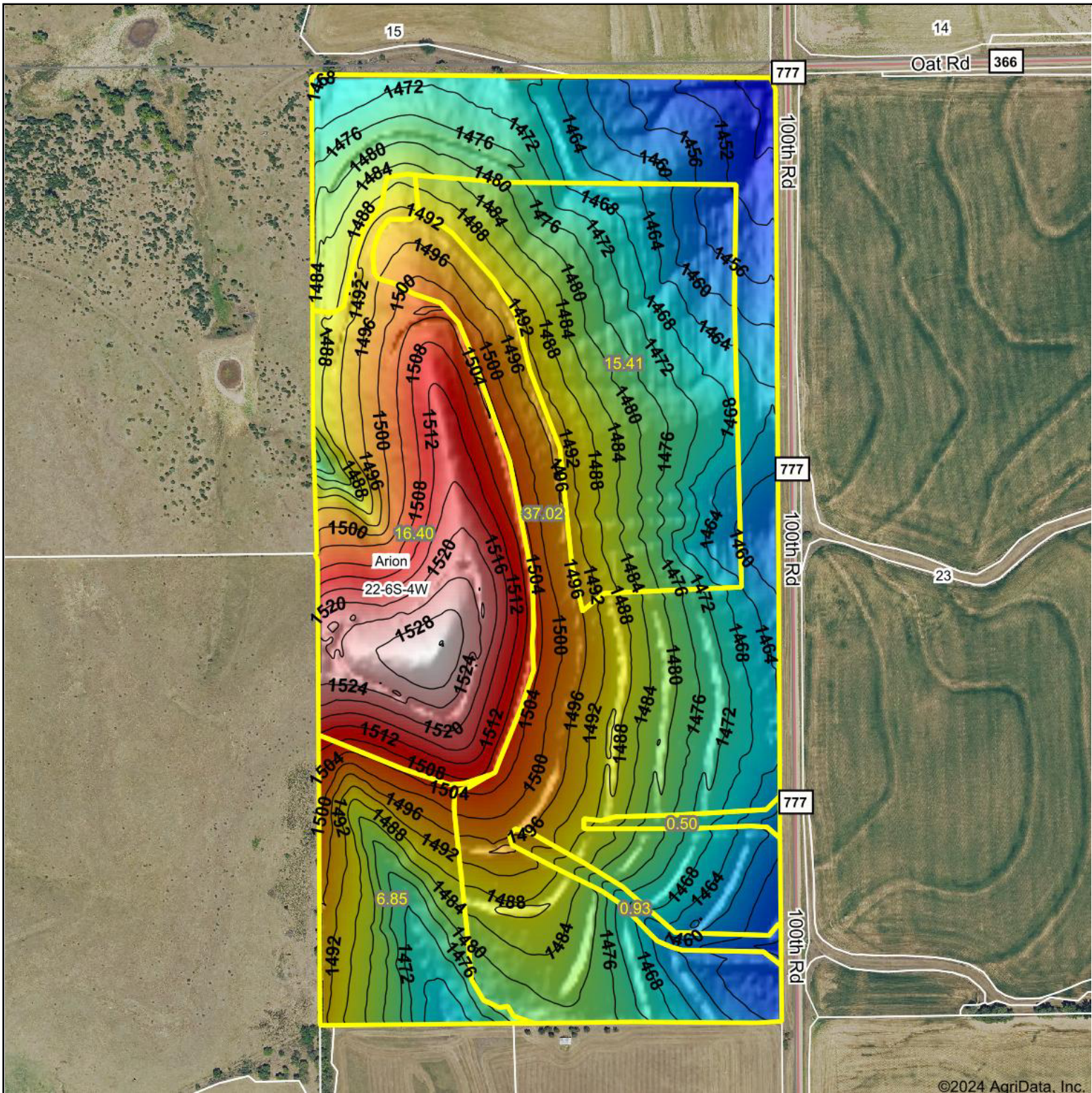
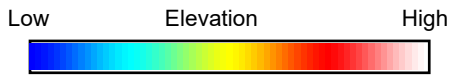


Topography Hillshade



©2024 AgriData, Inc.



Source: USGS 3 meter dem
 Interval(ft): 4
 Min: 1,446.0
 Max: 1,532.1
 Range: 86.1
 Average: 1,484.2
 Standard Deviation: 19.06 ft



22-6S-4W
Cloud County
Kansas

Boundary Center: 39° 31' 17.23, -97° 44' 37.68



© AgriData, Inc. 2023 www.AgriDataInc.com
 Field borders provided by Farm Service Agency as of 5/21/2008.