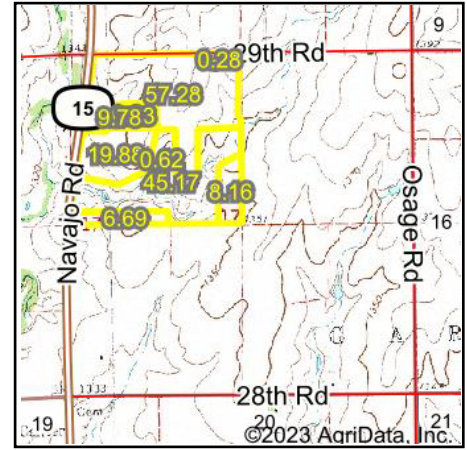
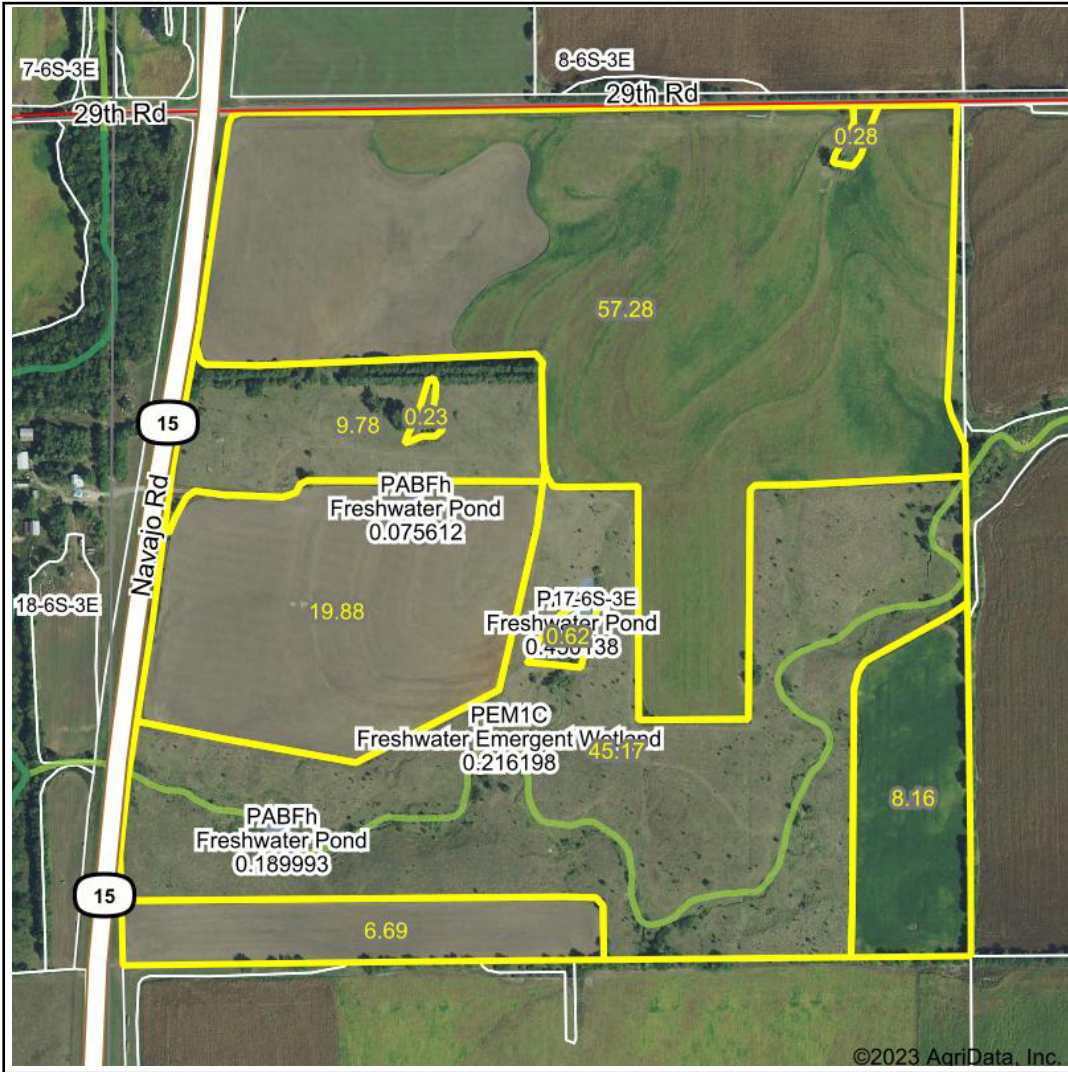


Wetlands Map



State: Kansas
Location: 17-6S-3E
County: Clay
Township: Garfield
Date: 11/27/2023



Maps Provided By:



© AgriData, Inc. 2023 www.AgriDataInc.com



0ft 680ft 1360ft

Classification Code	Type	Acres
PEM1A	Freshwater Emergent Wetland	1.76
PABFh	Freshwater Pond	0.72
PEM1C	Freshwater Emergent Wetland	0.22
Total Acres		2.70

Data Source: National Wetlands Inventory website. U.S. DoI, Fish and Wildlife Service, Washington, D.C. <http://www.fws.gov/wetlands/>