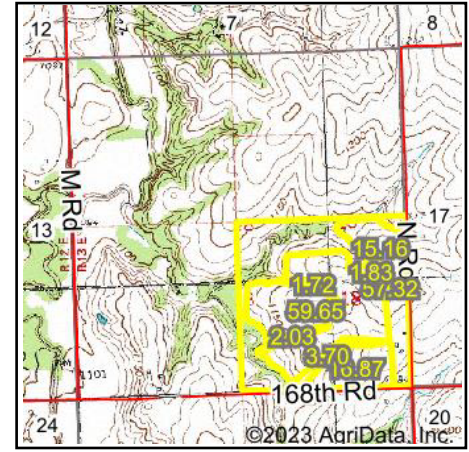
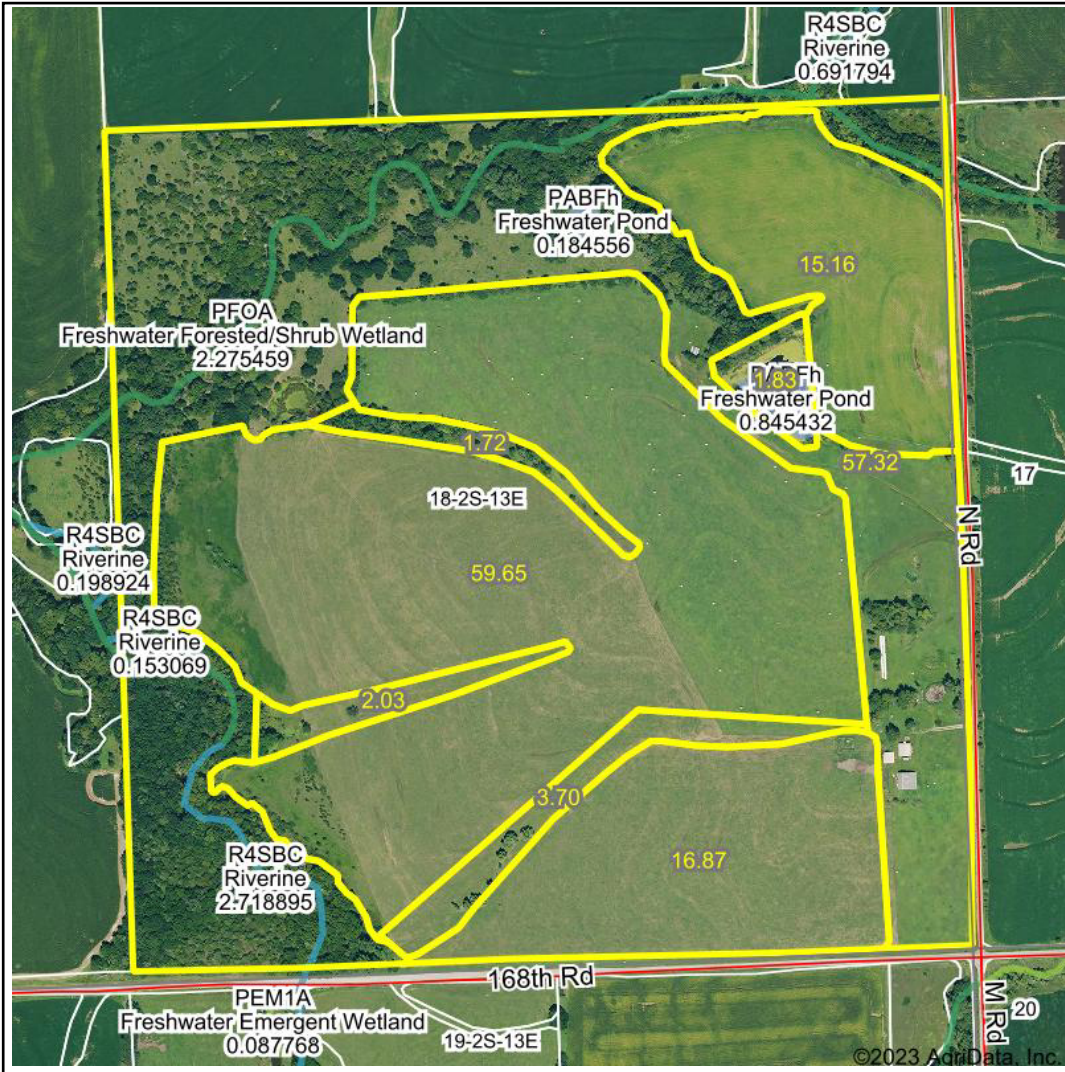


Wetlands Map



State: Kansas
Location: 18-2S-13E
County: Nemaha
Township: Gilman
Date: 12/25/2023



Maps Provided By:



© AgriData, Inc. 2023 www.AgriDataInc.com



0ft 686ft 1372ft

Classification Code	Type	Acres
PFOA	Freshwater Forested/Shrub Wetland	1.53
PABFh	Freshwater Pond	1.03
R4SBC	Riverine	0.60
Total Acres		3.16

Data Source: National Wetlands Inventory website. U.S. DoI, Fish and Wildlife Service, Washington, D.C. <http://www.fws.gov/wetlands/>