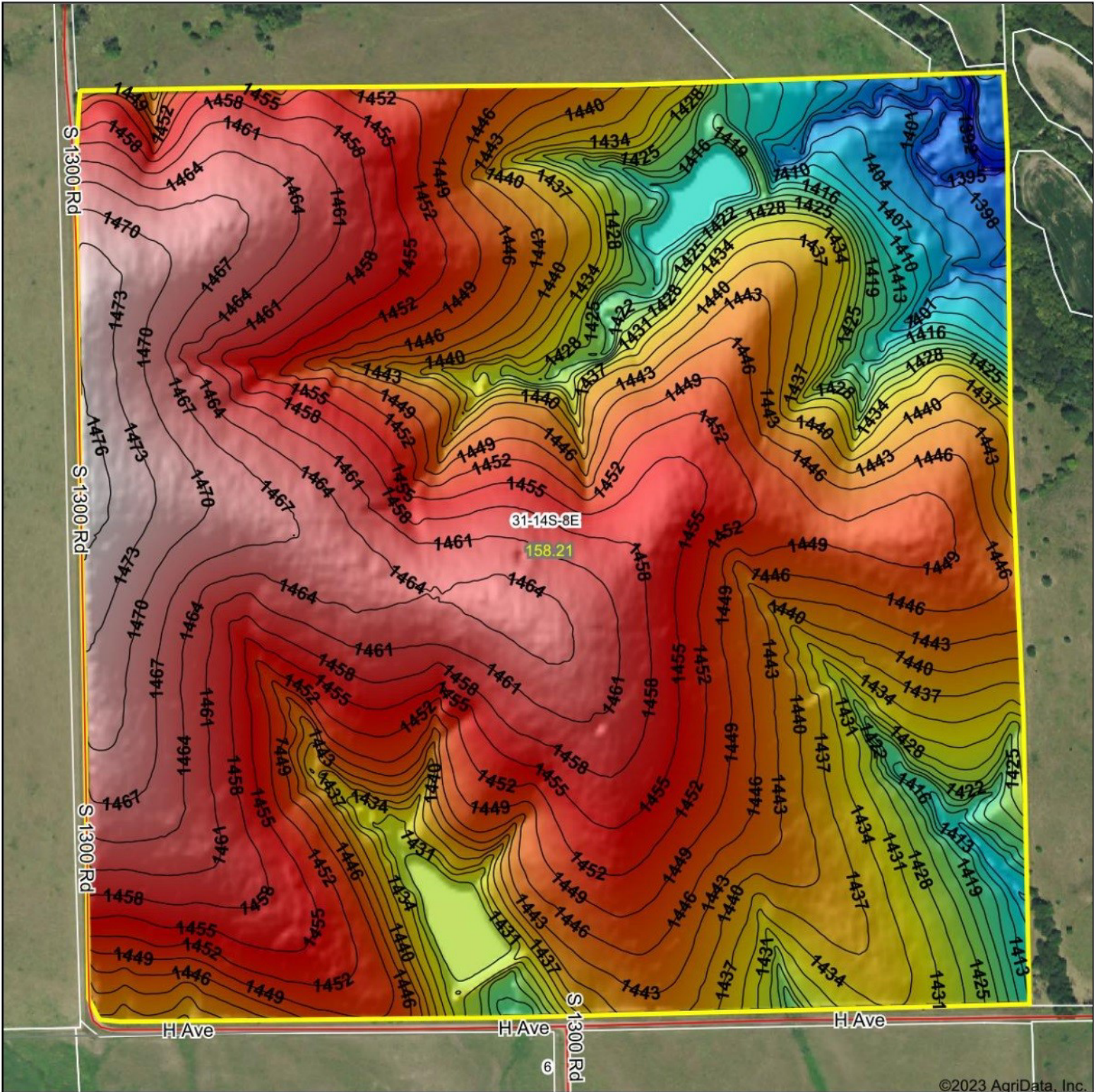
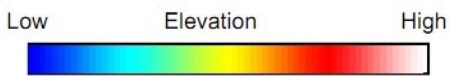


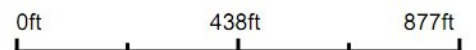
Topography Hillshade



©2023 AgriData, Inc.



Source: USGS 3 meter dem



Interval(ft): 3

Min: 1,386.9

Max: 1,477.8

Range: 90.9

Average: 1,446.0

Standard Deviation: 17.45 ft



9/18/2023

31-14S-8E
Morris County
Kansas

Boundary Center: 38° 47' 12.04, -96° 34' 15.1



Maps Provided By:



© AgriData, Inc. 2023 www.AgriDataInc.com

Field borders provided by Farm Service Agency as of 5/21/2008.