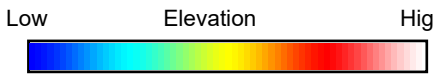
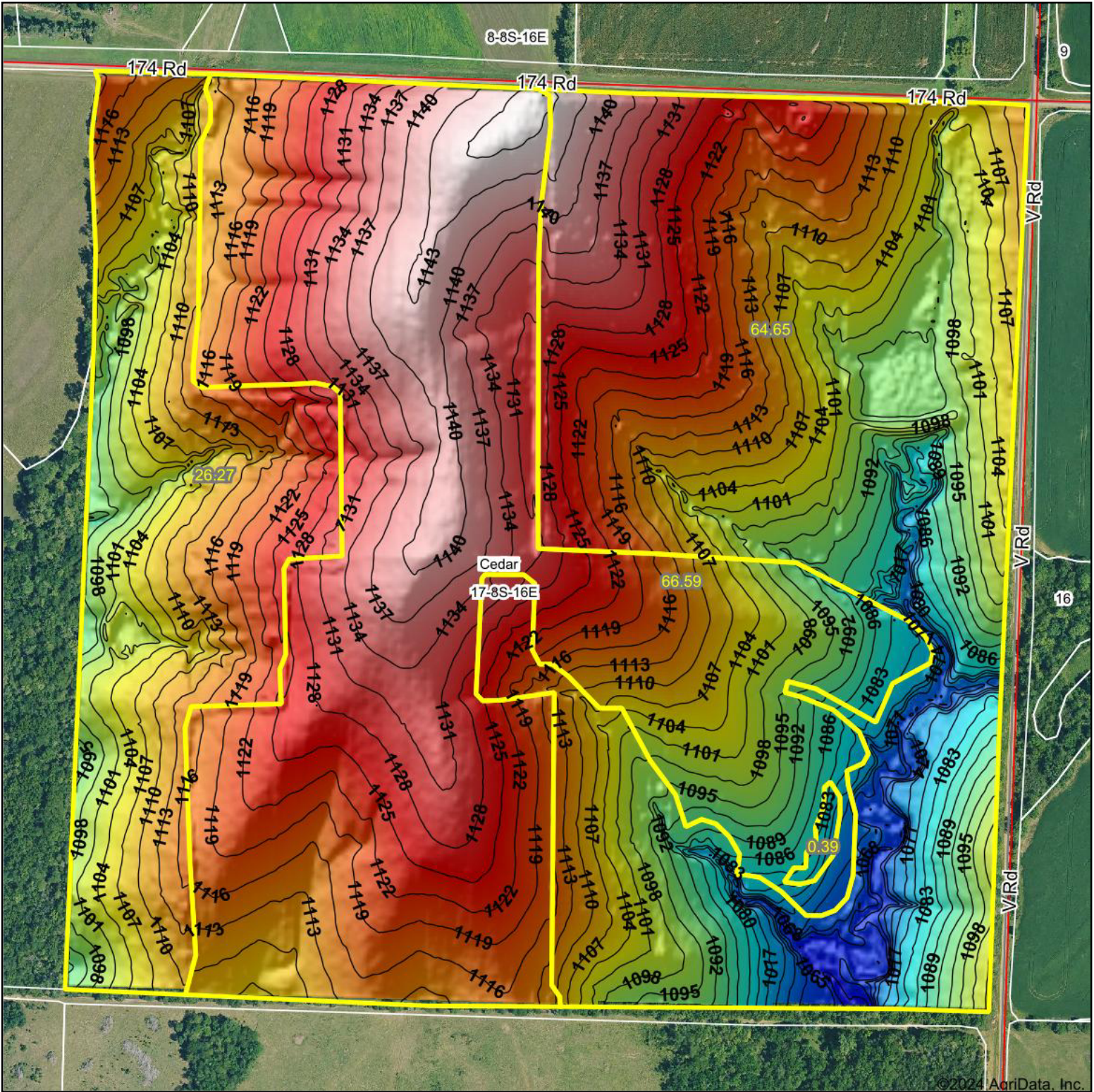
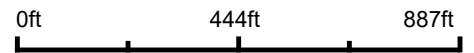


Topography Hillshade



Source: USGS 3 meter dem
 Interval(ft): 3
 Min: 1,061.1
 Max: 1,147.1
 Range: 86.0
 Average: 1,112.4
 Standard Deviation: 17.88 ft



17-8S-16E
Jackson County
Kansas

Boundary Center: 39° 21' 27.73, -95° 38' 59.93



Maps Provided By:



© AgriData, Inc. 2023 www.AgriDataInc.com

Field borders provided by Farm Service Agency as of 5/21/2008.

©2024 AgriData, Inc.