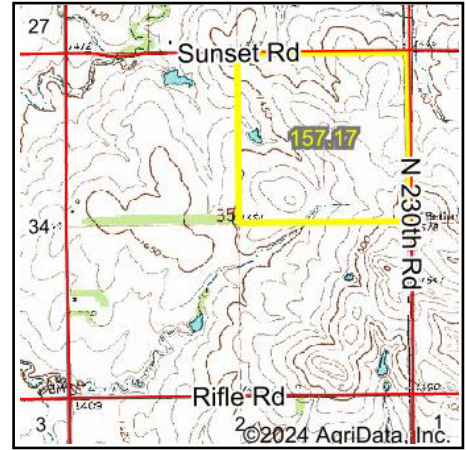
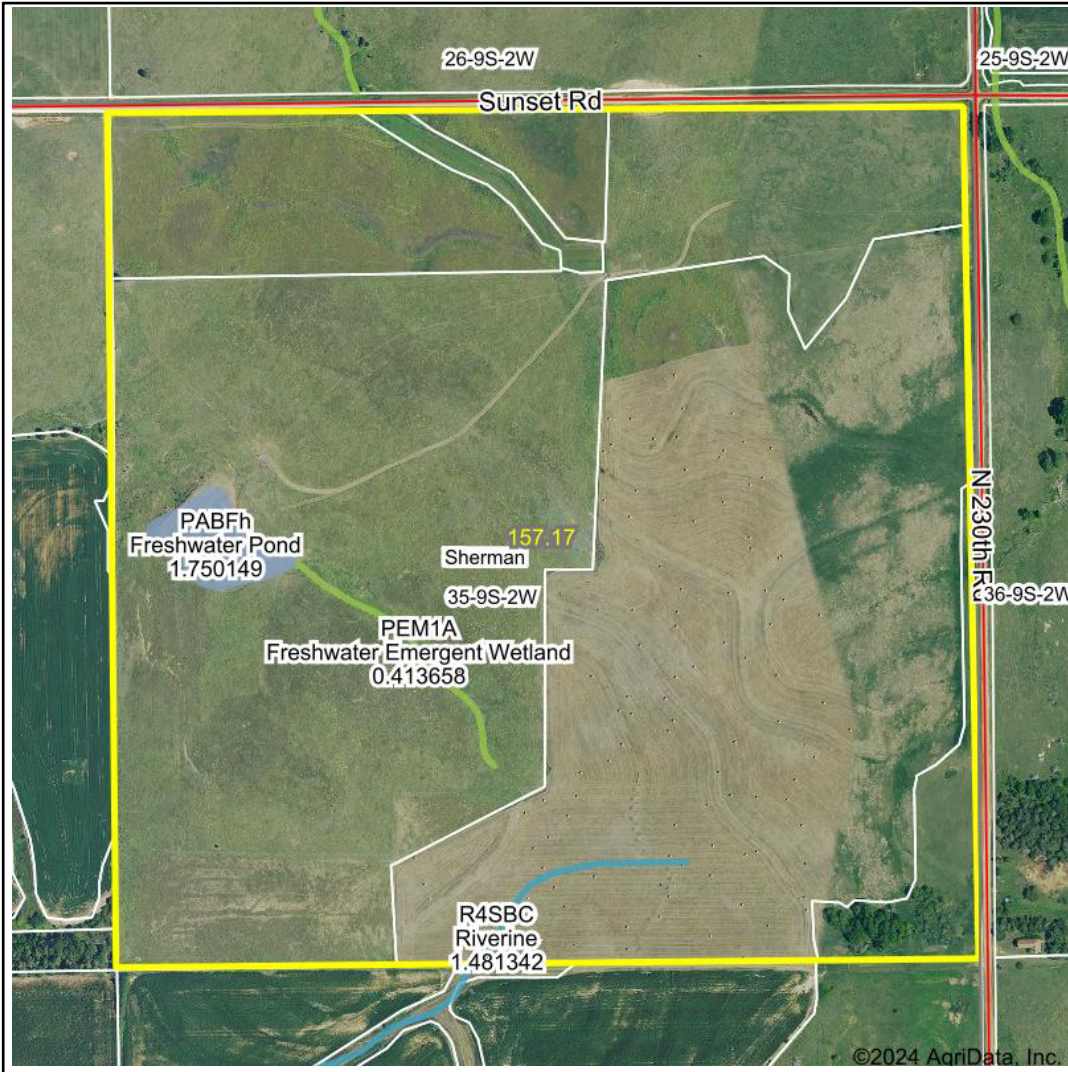


Wetlands Map

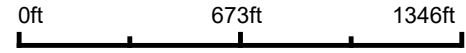


State: Kansas
Location: 35-9S-2W
County: Ottawa
Township: Sherman
Date: 2/23/2024



Maps Provided By:

 CUSTOMIZED ONLINE MAPPING
 © AgriData, Inc. 2023 www.AgriDataInc.com



Classification Code	Type	Acres
PABFh	Freshwater Pond	1.75
PEM1A	Freshwater Emergent Wetland	0.41
R4SBC	Riverine	0.36
Total Acres		2.52

Data Source: National Wetlands Inventory website. U.S. DoI, Fish and Wildlife Service, Washington, D.C. <http://www.fws.gov/wetlands/>

Field borders provided by Farm Service Agency as of 5/21/2008.