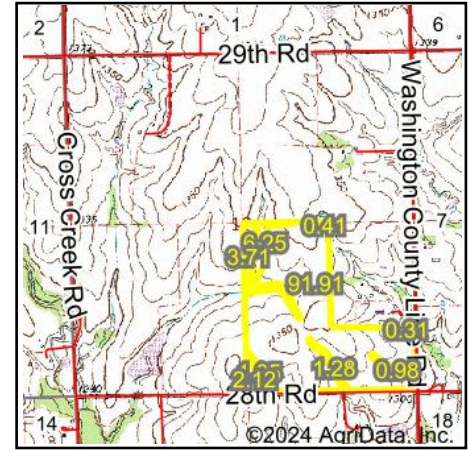
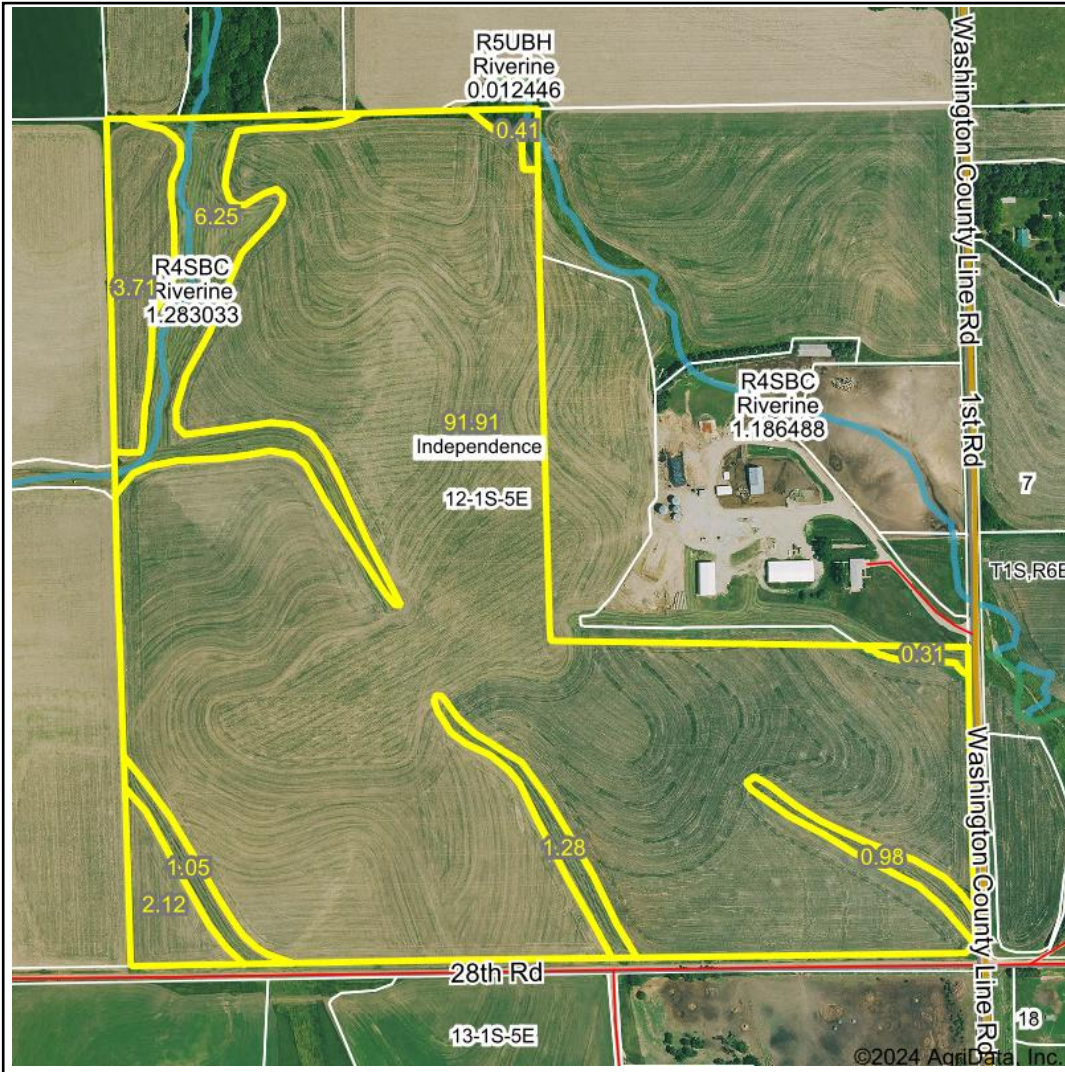


# Wetlands Map



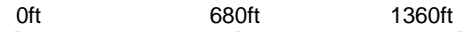
**State:** Kansas  
**Location:** 12-1S-5E  
**County:** Washington  
**Township:** Independence  
**Date:** 6/28/2024



Maps Provided By:



© AgriData, Inc. 2023 [www.AgriDataInc.com](http://www.AgriDataInc.com)



Classification Code	Type	Acres
R4SBC	Riverine	0.59
Total Acres		0.59

Data Source: National Wetlands Inventory website. U.S. DoI, Fish and Wildlife Service, Washington, D.C. <http://www.fws.gov/wetlands/>