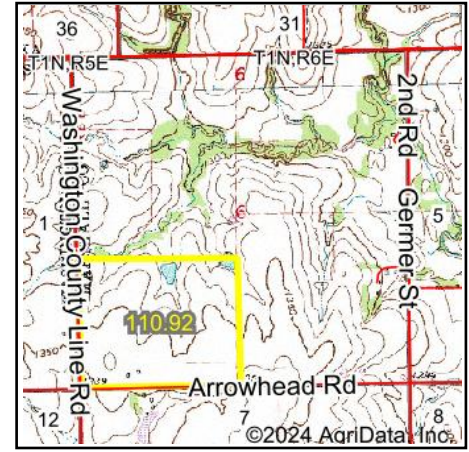
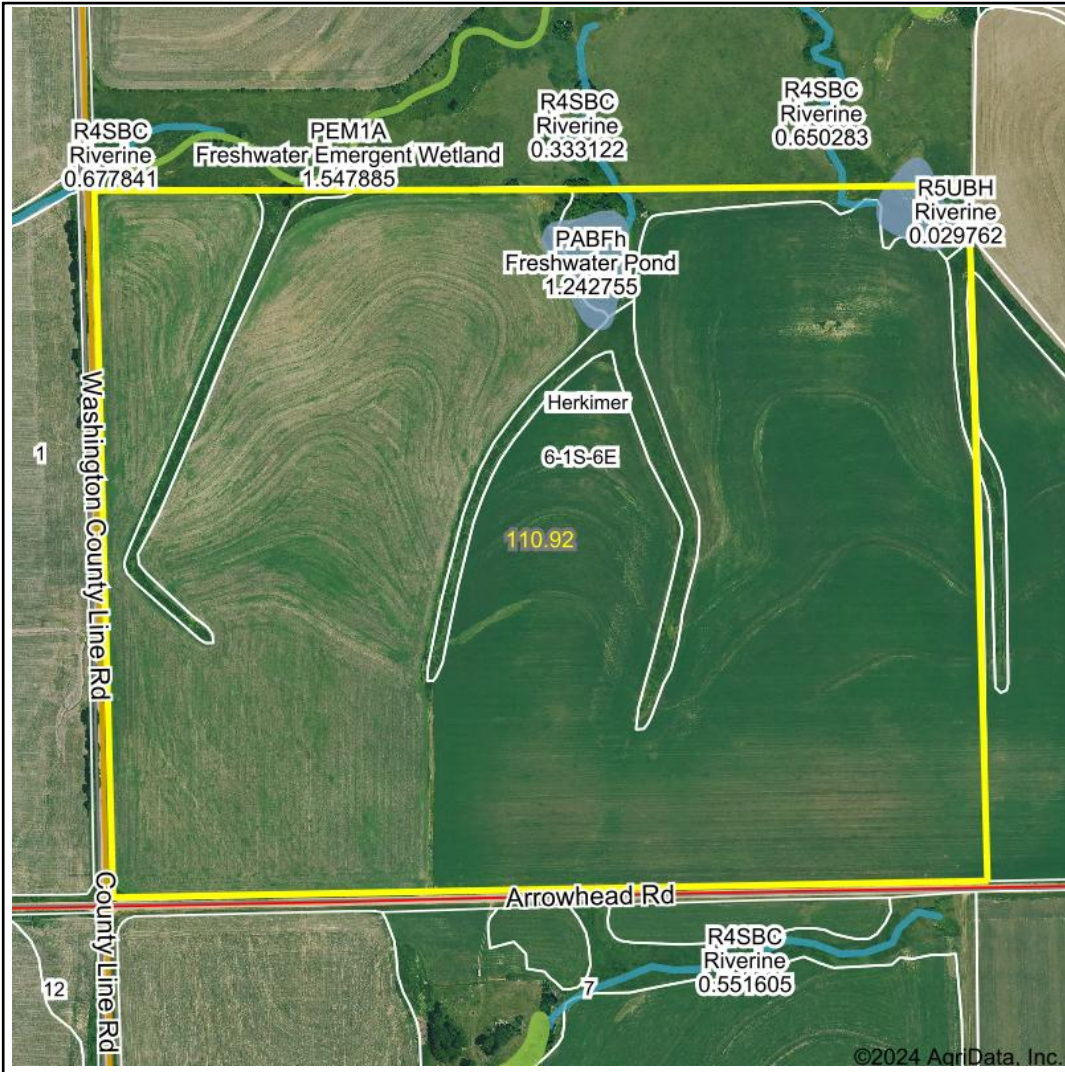


# Wetlands Map



**State:** Kansas  
**Location:** 6-1S-6E  
**County:** Marshall  
**Township:** Herkimer  
**Date:** 6/28/2024



Maps Provided By:



© AgriData, Inc. 2023 [www.AgriDataInc.com](http://www.AgriDataInc.com)



0ft 619ft 1238ft

Classification Code	Type	Acres
PABFh	Freshwater Pond	1.92
R4SBC	Riverine	0.12
R5UBH	Riverine	0.03
Total Acres		2.07

Data Source: National Wetlands Inventory website. U.S. DoI, Fish and Wildlife Service, Washington, D.C. <http://www.fws.gov/wetlands/>