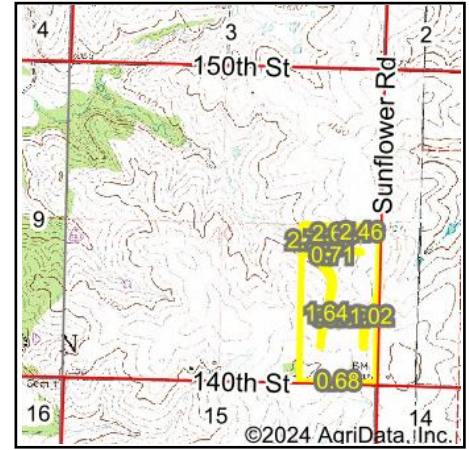


# Wetlands Map



**State:** Kansas  
**Location:** 10-4S-18E  
**County:** Brown  
**Township:** Washington  
**Date:** 7/20/2024



Maps Provided By:



© AgriData, Inc. 2023 [www.AgriDataInc.com](http://www.AgriDataInc.com)



0ft 657ft 1314ft

Classification Code	Type	Acres
R4SBC	Riverine	0.31
PEM1Ah	Freshwater Emergent Wetland	0.19
R5UBH	Riverine	0.12
PFOA	Freshwater Forested/Shrub Wetland	0.03
Total Acres		0.65

Data Source: National Wetlands Inventory website. U.S. DoI, Fish and Wildlife Service, Washington, D.C. <http://www.fws.gov/wetlands/>