

Field Overview

Grower: JAC Farms
Farm: David Compton
Field: Paden W. Horton
Season: 2025
Area: 123.15 acre
Last sampled: 09/01/2019



38 samples taken

○ Sample Sequence Number

Field Overview

Grower: JAC Farms
Farm: David Compton
Field: Paden W. Horton
Season: 2025
Area: 123.15 acre
Last sampled: 09/01/2023



38 samples taken

○ Sample Sequence Number

Soil Test Results

Grower: JAC Farms
 Farm: David Compton
 Field: Paden W. Horton
 Season:
 Area: 123.15 acre
 Last sampled: 09/01/2019

Min:	5.3	0	8	12.4	2.5	8	72	1580	221	5	0.3	15	84	0.6	0.2	52	0	12	1	0	
Max:	7	6.82	176	25.2	5.5	40	223	4349	620	17	13.5	136	168	1.7	0.6	86	31	24	3	4	
Avg:	5.81	6.36	23.18	20.01	3.88	16.53	123.55	2438.74	421.05	7.53	1.73	44.76	119.11	1.26	0.39	61.08	19.45	17.42	1.71	0.26	
SEQ	Depth	pH (1:1)	B-pH (M)	Na (M3)	CEC (Calc)	OM (Calc)	P (M3)	K (M3)	Ca (M3)	Mg (M3)	S (M3)	Zn (M3)	Mn (M3)	Fe (M3)	Cu (M3)	B (M3)	ECaP	EHP	EMgP	EKP	ESP
1	0-8	7	0	24	25.2	3	40	126	4349	355	15	1.6	45	104	1	0.4	86	0	12	1	0
2	0-8	5.9	6.54	20	23.1	3.8	32	154	2845	539	8	1.7	35	119	1.3	0.5	62	17	19	2	0
3	0-8	5.6	6.4	15	22.7	3.7	9	119	2652	450	6	0.5	25	114	1.5	0.4	58	23	16	1	0
4	0-8	5.7	6.49	20	21	4.2	12	117	2462	464	7	0.6	25	101	1.2	0.4	59	21	18	1	0
5	0-8	5.5	6.32	23	23.5	3.5	13	116	2579	489	7	0.6	25	102	1.2	0.4	55	26	17	1	0
6	0-8	5.5	6.53	61	15.4	2.5	8	72	1660	319	8	0.3	15	89	0.9	0.3	54	26	17	1	2
7	0-8	5.7	6.57	28	17	2.6	9	86	1983	377	8	0.4	15	92	1	0.3	58	21	18	1	1
8	0-8	6.3	6.71	140	21.1	3.6	15	115	2557	620	17	0.6	49	125	1	0.4	61	10	24	1	3
9	0-8	5.6	6.54	17	16.7	3.4	17	81	1914	353	7	1	43	110	0.6	0.2	57	23	18	1	0
10	0-8	6.1	6.68	12	18	5.5	30	223	2451	312	7	13.5	20	155	1.6	0.6	68	14	14	3	0
11	0-8	6.6	6.82	18	18.7	4.2	17	120	2675	456	7	2.8	59	154	1.4	0.5	72	6	20	2	0
12	0-8	6	6.62	22	20.6	4.4	15	102	2587	507	6	1.4	28	110	1.3	0.5	63	15	20	1	0
13	0-8	5.8	6.51	17	21.9	3.5	8	131	2507	576	6	0.6	28	100	1.4	0.4	57	19	22	2	0
14	0-8	5.9	6.66	10	15.9	3.2	8	95	2030	330	6	1.2	61	103	1.2	0.3	64	17	17	2	0
15	0-8	5.7	6.52	11	19.7	4.3	14	122	2343	418	8	1.3	47	117	1.3	0.4	60	21	18	2	0
16	0-8	5.8	6.63	9	15.6	4	13	89	1995	281	7	3.5	50	89	1.1	0.4	64	19	15	2	0
17	0-8	6.1	6.73	8	14.4	3.7	13	78	2009	260	5	2.3	50	108	1.1	0.4	70	14	15	1	0
18	0-8	5.8	6.56	13	19.3	4	15	138	2347	418	6	1.6	34	89	1.3	0.5	61	19	18	2	0
19	0-8	5.5	6.38	9	21.2	3.6	10	132	2288	461	6	1	32	84	1.1	0.3	54	26	18	2	0
20	0-8	5.4	6.3	8	22	3.1	21	129	2357	424	7	1	31	146	1.3	0.4	54	29	16	2	0
21	0-8	5.5	6.29	14	24.7	3.8	12	142	2672	546	6	0.3	23	92	1.2	0.3	54	26	18	2	0
22	0-8	6	6.61	11	21.2	4.4	9	144	2836	407	5	0.7	136	89	1.1	0.4	67	15	16	2	0
23	0-8	5.8	6.57	11	19	4.4	8	101	2305	427	7	0.8	39	116	1.4	0.5	61	19	19	1	0
24	0-8	5.7	6.47	11	22.1	4.8	18	126	2753	399	6	1.4	27	139	1.5	0.4	62	21	15	2	0

Soil Test Results

Grower: JAC Farms
 Farm: David Compton
 Field: Paden W. Horton
 Season:
 Area: 123.15 acre
 Last sampled: 09/01/2019

Min:	5.3	0	8	12.4	2.5	8	72	1580	221	5	0.3	15	84	0.6	0.2	52	0	12	1	0	
Max:	7	6.82	176	25.2	5.5	40	223	4349	620	17	13.5	136	168	1.7	0.6	86	31	24	3	4	
Avg:	5.81	6.36	23.18	20.01	3.88	16.53	123.55	2438.74	421.05	7.53	1.73	44.76	119.11	1.26	0.39	61.08	19.45	17.42	1.71	0.26	
SEQ	Depth	pH (1:1)	B-pH (M)	Na (M3)	CEC (Calc)	OM (Calc)	P (M3)	K (M3)	Ca (M3)	Mg (M3)	S (M3)	Zn (M3)	Mn (M3)	Fe (M3)	Cu (M3)	B (M3)	ECaP	EHP	EMgP	EKP	ESP
25	0-8	5.7	6.4	10	25.1	4.9	19	161	3035	495	7	2.3	31	140	1.5	0.5	60	21	16	2	0
26	0-8	5.7	6.48	13	21.6	4.9	22	138	2650	412	8	2.3	30	136	1.4	0.4	61	21	16	2	0
27	0-8	5.9	6.54	14	23.3	4.7	23	161	2873	546	7	1.5	43	128	1.5	0.5	62	17	20	2	0
28	0-8	5.3	6.22	13	22.9	3.6	15	138	2381	423	8	0.9	40	148	1.7	0.3	52	31	15	2	0
29	0-8	5.4	6.39	13	18.9	3.9	11	109	2024	369	8	1.2	51	136	1.2	0.4	54	29	16	2	0
30	0-8	5.9	6.57	10	21.4	4.8	23	143	2813	401	7	2.7	40	146	1.4	0.5	66	17	16	2	0
31	0-8	5.6	6.42	17	21.7	4.8	22	138	2474	455	9	1.8	40	148	1.4	0.3	57	24	18	2	0
32	0-8	5.9	6.6	15	19.6	3.9	19	151	2430	447	8	1.8	46	127	1.3	0.4	62	17	19	2	0
33	0-8	5.9	6.62	18	18.5	3.2	12	127	2274	434	8	1.4	67	111	1.3	0.3	62	17	20	2	0
34	0-8	6.1	6.63	10	21.1	4.1	13	142	2813	436	6	1.9	63	168	1.6	0.5	67	14	17	2	0
35	0-8	5.8	6.64	13	15.3	4	17	111	1928	294	8	1.8	69	110	1.1	0.3	63	19	16	2	0
36	0-8	5.8	6.69	12	12.4	2.8	17	96	1580	221	7	2.1	95	112	0.9	0.3	64	19	15	2	0
37	0-8	5.4	6.43	15	17.4	2.5	24	118	1816	355	8	1.9	88	124	1.1	0.3	52	29	17	2	0
38	0-8	5.9	6.58	176	21	4.2	25	104	2425	524	9	1.6	56	145	1.5	0.4	58	17	21	1	4

Soil Test Results

Grower: JAC Farms
Farm: David Compton
Field: Paden W. Horton
Season:
Area: 123.15 acre
Last sampled: 09/01/2023

Min:	5.5	0	7	14.3	2.3	13	104	1949	143	7	1.8	16	84	1.1	0.4	56	2	7	2	0	
Max:	6.9	6.87	76	27.9	5.6	122	228	3967	773	16	30	228	212	3	0.9	77	26	25	3	2	
Avg:	6.16	6.31	20.45	20.53	4.08	36.84	171.61	2745.55	438.29	11.34	4.23	48.08	129.26	1.59	0.55	66.74	13.03	17.68	2.08	0.21	
SEQ	Depth	pH (1:1)	B-pH (M)	Na (M3)	CEC (Calc)	OM (Calc)	P (M3)	K (M3)	Ca (M3)	Mg (M3)	S (M3)	Zn (M3)	Mn (M3)	Fe (M3)	Cu (M3)	B (M3)	ECaP	EHP	EMgP	EKP	ESP
1	0-8	6.5	6.8	18	17.3	3.8	38	212	2440	381	14	3.1	42	107	1.9	0.5	70	8	18	3	0
2	0-8	6.4	6.72	23	22.9	3.8	41	219	3216	491	13	3.6	34	115	1.8	0.6	70	9	18	2	0
3	0-8	6.3	6.71	10	20.8	4.9	58	174	2861	459	9	4.1	26	139	1.6	0.5	69	11	18	2	0
4	0-8	6.4	6.75	13	19.9	4.1	36	180	2777	447	11	3.5	29	121	1.5	0.5	70	9	19	2	0
5	0-8	6	6.62	11	20.7	3.5	25	187	2707	428	12	3.2	40	149	1.7	0.5	65	15	17	2	0
6	0-8	6.2	6.71	76	18.3	3.6	33	215	2217	501	14	2.2	31	107	1.4	0.6	61	12	23	3	2
7	0-8	5.5	6.45	19	18.5	3.7	32	135	2114	328	13	2.8	30	154	1.3	0.4	57	26	15	2	0
8	0-8	6.4	6.76	42	18.8	3.5	72	156	2556	447	14	3.4	38	178	1.4	0.7	68	9	20	2	1
9	0-8	5.9	6.58	26	21	3	57	193	2498	526	13	3	46	140	1.2	0.5	60	17	21	2	0
10	0-8	6	6.66	9	18.1	3.6	122	228	2710	143	16	30	24	212	3	0.6	75	15	7	3	0
11	0-8	6	6.71	12	14.9	3.5	32	104	2001	289	10	5	16	134	1.4	0.4	67	15	16	2	0
12	0-8	6.8	6.87	52	19.4	3.5	44	145	2892	452	13	5	67	197	2	0.8	74	3	19	2	1
13	0-8	6.8	6.86	38	22.2	4.5	67	211	3223	567	14	6.1	52	174	2.1	0.8	73	3	21	2	1
14	0-8	6.1	6.61	12	22.7	3.8	28	155	2949	513	10	2.7	49	132	1.6	0.5	65	14	19	2	0
15	0-8	5.8	6.48	11	23.7	4.5	22	185	2917	492	11	1.8	39	131	1.8	0.6	62	19	17	2	0
16	0-8	5.9	6.64	9	17.5	3.6	15	143	2289	328	11	2.3	48	105	1.4	0.4	65	17	16	2	0
17	0-8	5.9	6.61	11	19	3.8	25	171	2335	432	10	2.8	29	106	1.3	0.4	61	17	19	2	0
18	0-8	6.8	0	51	19.6	3.7	33	159	2704	584	7	3.4	40	84	1.1	0.6	69	3	25	2	1
19	0-8	5.8	6.52	17	21.6	3.8	19	162	2550	507	11	2.6	36	90	1.3	0.4	59	19	20	2	0
20	0-8	6.2	6.66	44	22.7	3.7	32	199	2843	610	10	2.6	37	94	1.3	0.6	63	12	22	2	1
21	0-8	5.5	6.36	11	22	4.7	32	184	2457	414	11	2.3	36	120	1.4	0.5	56	26	16	2	0
22	0-8	6.6	6.8	18	20.9	4.6	13	152	3209	376	12	1.9	228	99	1.3	0.7	77	6	15	2	0
23	0-8	6.3	6.68	20	23.8	4.3	31	181	3343	484	14	2.9	55	129	1.7	0.7	70	10	17	2	0
24	0-8	6	6.61	12	21.6	5.2	36	152	2909	406	10	4.1	28	133	1.4	0.5	67	15	16	2	0

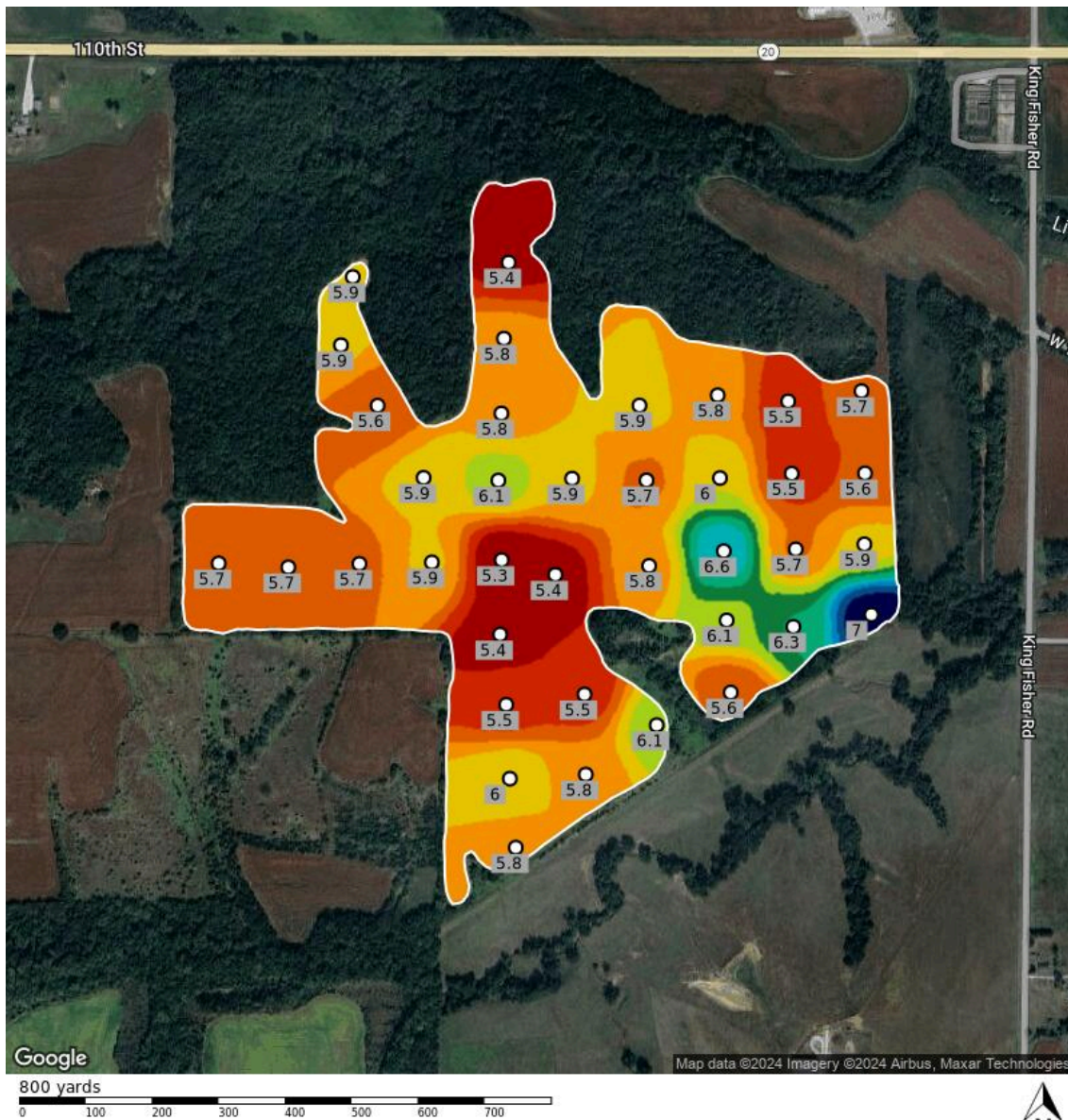
Soil Test Results

Grower: JAC Farms
 Farm: David Compton
 Field: Paden W. Horton
 Season:
 Area: 123.15 acre
 Last sampled: 09/01/2023

Min:	5.5	0	7	14.3	2.3	13	104	1949	143	7	1.8	16	84	1.1	0.4	56	2	7	2	0	
Max:	6.9	6.87	76	27.9	5.6	122	228	3967	773	16	30	228	212	3	0.9	77	26	25	3	2	
Avg:	6.16	6.31	20.45	20.53	4.08	36.84	171.61	2745.55	438.29	11.34	4.23	48.08	129.26	1.59	0.55	66.74	13.03	17.68	2.08	0.21	
SEQ	Depth	pH (1:1)	B-pH (M)	Na (M3)	CEC (Cal c)	OM (Calc)	P (M3)	K (M3)	Ca (M3)	Mg (M3)	S (M3)	Zn (M3)	Mn (M3)	Fe (M3)	Cu (M3)	B (M3)	ECaP	EHP	EMgP	EKP	ESP
25	0-8	6	6.51	12	27.9	5	35	222	3688	554	12	4.4	33	154	1.8	0.7	66	15	16	2	0
26	0-8	6.3	6.65	20	27.1	5.6	48	202	3863	525	14	6.1	32	139	2.1	0.9	71	10	16	2	0
27	0-8	6.9	0	53	27.4	4.8	35	190	3967	773	7	3.5	49	108	1.9	0.8	72	2	24	2	1
28	0-8	5.9	6.59	11	20.4	5	29	147	2651	396	9	2.9	38	124	1.6	0.4	65	17	16	2	0
29	0-8	5.8	6.6	10	17.4	3.8	26	140	2155	355	10	2.9	39	130	1.5	0.5	62	19	17	2	0
30	0-8	6.2	6.68	10	20.8	4.9	29	177	2906	395	8	4.3	31	125	1.5	0.6	70	12	16	2	0
31	0-8	6.2	6.65	14	23.5	5	41	175	3235	486	10	4.5	33	144	1.8	0.6	69	12	17	2	0
32	0-8	5.9	6.6	19	19.9	4.4	30	170	2548	397	13	3.3	39	128	1.4	0.4	64	17	17	2	0
33	0-8	6	6.67	13	17.6	3.3	33	153	2332	344	12	4.1	74	125	1.6	0.4	66	15	16	2	0
34	0-8	6.3	6.72	12	19.7	4.1	30	141	2809	382	10	4.3	67	115	1.6	0.5	71	11	16	2	0
35	0-8	6.3	6.71	11	21.4	5	45	178	2998	441	11	4.7	47	126	1.6	0.5	70	10	17	2	0
36	0-8	5.9	6.69	7	14.3	3.4	28	131	1949	210	9	5	113	117	1.3	0.4	68	17	12	2	0
37	0-8	5.8	6.61	10	16.7	2.3	26	137	2010	366	12	3.3	81	120	1.4	0.4	60	19	18	2	0
38	0-8	6.4	6.77	10	18.1	3.8	22	156	2503	426	11	3.1	51	107	1.6	0.6	69	9	20	2	0

Soil pH

Grower: JAC Farms
Farm: David Compton
Field: Paden W. Horton
Season: 2019
Area: 123.15 acre
Last sampled: 09/01/2019

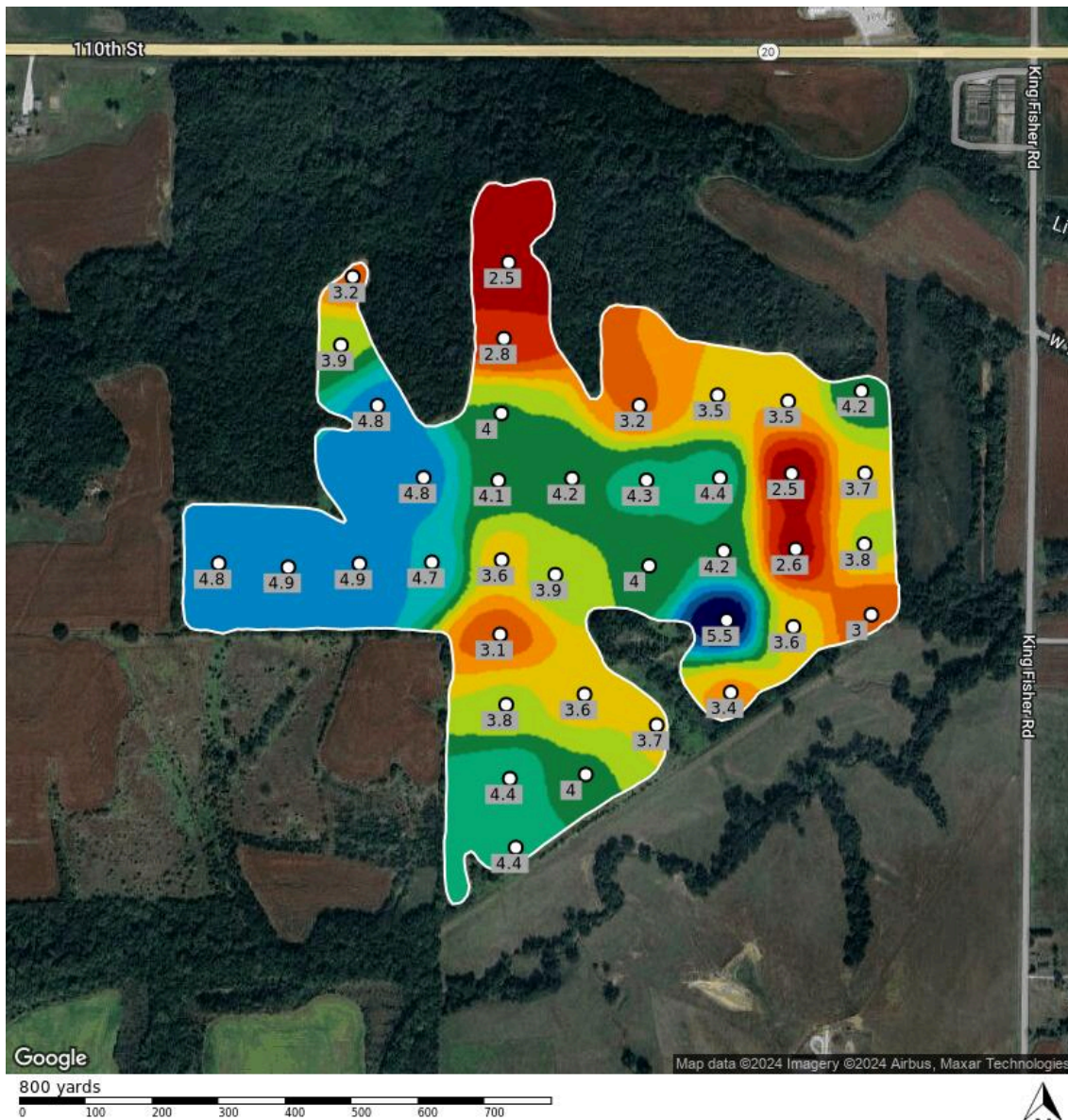


Min:	5.31
Max:	6.99
Average:	5.78
Std. Dev:	0.25
CV:	4.36%

Key	Area	% Area
■ 5.31 - 5.45	10.09 acre	8.19 %
■ 5.45 - 5.59	11.6 acre	9.42 %
■ 5.59 - 5.73	25.25 acre	20.5 %
■ 5.73 - 5.87	29.33 acre	23.82 %
■ 5.87 - 6.01	20.64 acre	16.76 %
■ 6.01 - 6.15	5.44 acre	4.42 %
■ 6.15 - 6.29	2.66 acre	2.16 %
■ 6.29 - 6.43	1.75 acre	1.42 %
■ 6.43 - 6.57	1.31 acre	1.06 %
■ 6.57 - 6.71	0.34 acre	0.27 %
■ 6.71 - 6.85	0.34 acre	0.28 %
■ 6.85 - 6.99	0.85 acre	0.69 %

Soil OM

Grower: JAC Farms
 Farm: David Compton
 Field: Paden W. Horton
 Season: 2019
 Area: 123.15 acre
 Last sampled: 09/01/2019

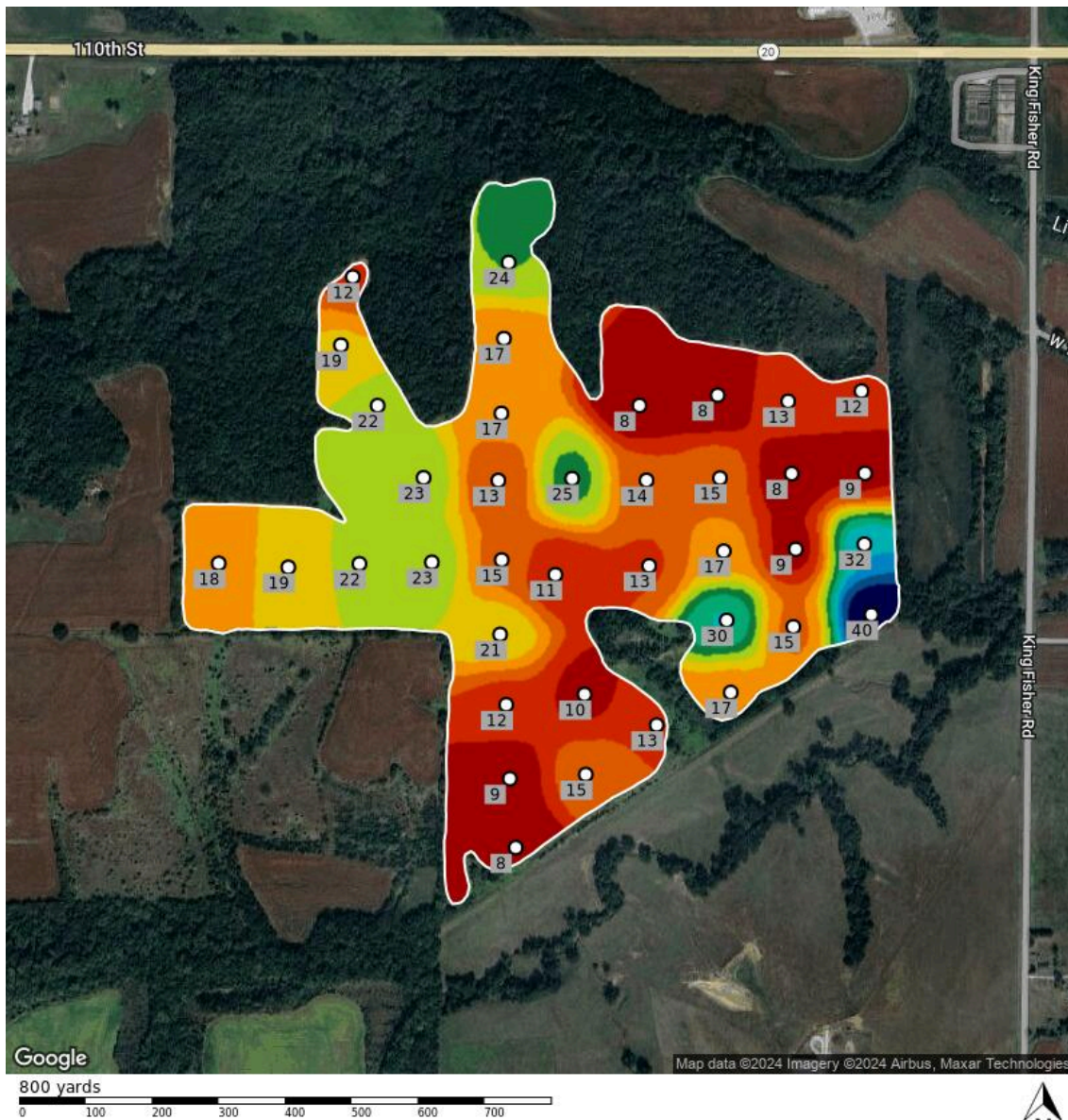


Min:	2.5
Max:	5.45
Average:	3.93
Std. Dev:	0.66
CV:	16.7%

Key	Area	% Area
2.5 - 2.75	6.3 acre	5.11 %
2.75 - 2.99	3.45 acre	2.81 %
2.99 - 3.24	7.03 acre	5.71 %
3.24 - 3.48	8.64 acre	7.01 %
3.48 - 3.73	17.31 acre	14.06 %
3.73 - 3.98	13.07 acre	10.61 %
3.98 - 4.22	18.04 acre	14.65 %
4.22 - 4.47	11.49 acre	9.33 %
4.47 - 4.71	3.79 acre	3.08 %
4.71 - 4.96	18.99 acre	15.42 %
4.96 - 5.2	0.58 acre	0.47 %
5.2 - 5.45	0.89 acre	0.72 %

Soil P Mehlich 3

Grower: JAC Farms
 Farm: David Compton
 Field: Paden W. Horton
 Season: 2019
 Area: 123.15 acre
 Last sampled: 09/01/2019

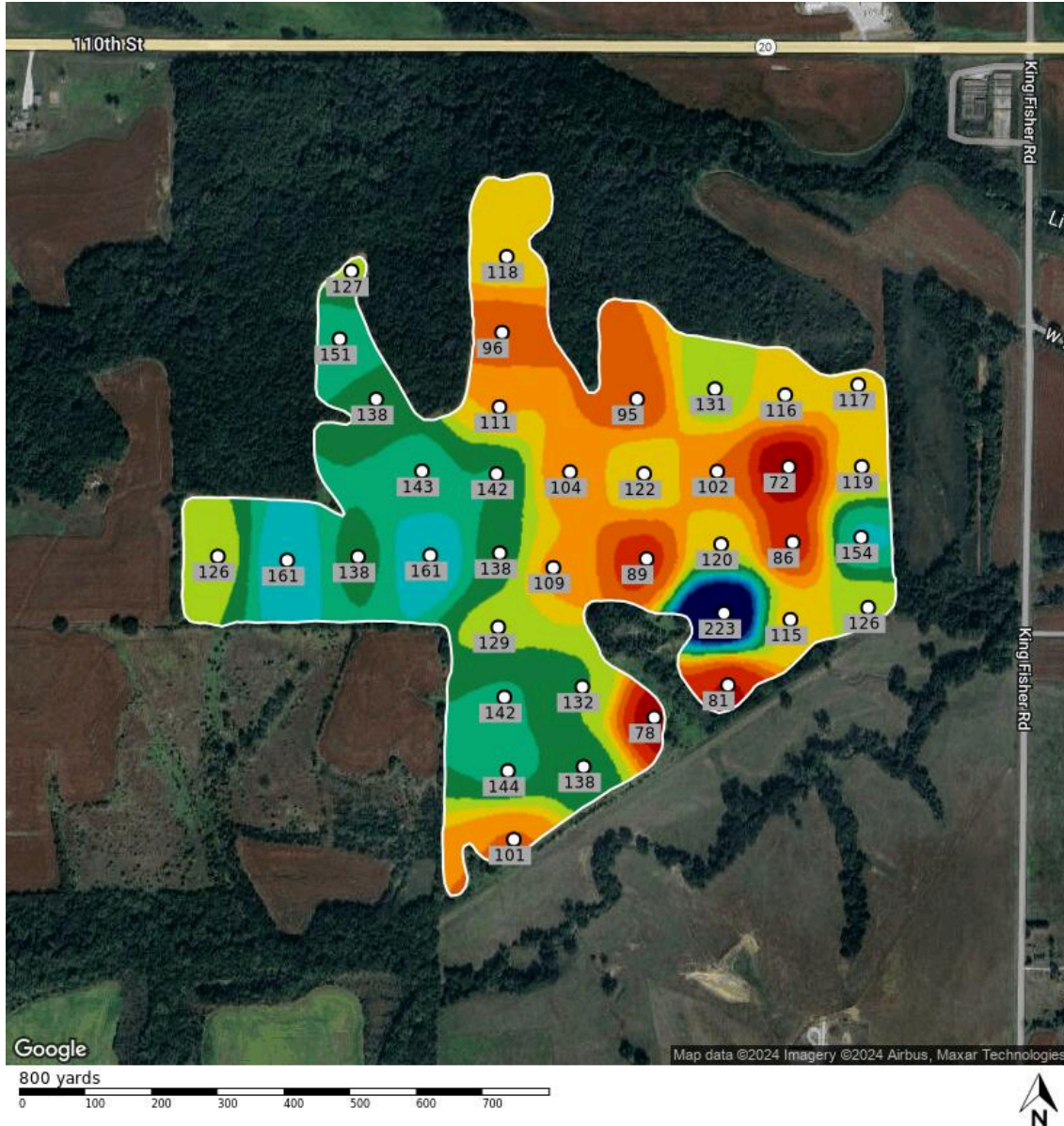


Min:	8.02
Max:	39.79
Average:	16.47
Std. Dev:	5.81
CV:	35.3%

Key	Area	% Area
8.02 - 10.66	19.61 acre	15.92 %
10.66 - 13.31	18.44 acre	14.98 %
13.31 - 15.96	15.81 acre	12.84 %
15.96 - 18.61	18 acre	14.62 %
18.61 - 21.26	12.66 acre	10.28 %
21.26 - 23.91	16.48 acre	13.38 %
23.91 - 26.55	4.19 acre	3.4 %
26.55 - 29.2	1.47 acre	1.19 %
29.2 - 31.85	1.09 acre	0.89 %
31.85 - 34.5	0.52 acre	0.42 %
34.5 - 37.15	0.38 acre	0.31 %
37.15 - 39.79	0.94 acre	0.76 %

Soil K Mehlich 3

Grower: JAC Farms
 Farm: David Compton
 Field: Paden W. Horton
 Season: 2019
 Area: 123.15 acre
 Last sampled: 09/01/2019

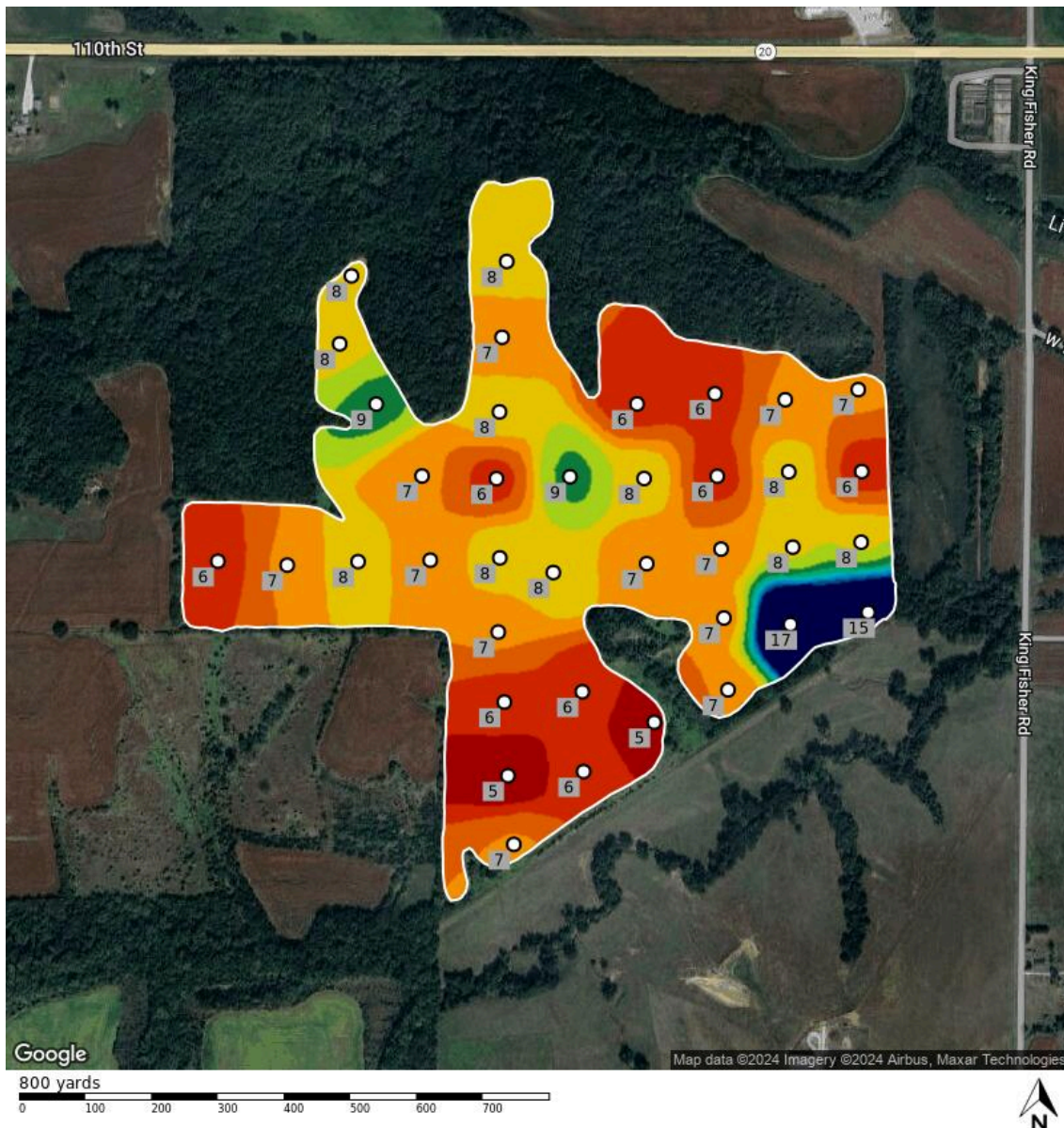


Min:	73.06
Max:	219.65
Average:	124.35
Std. Dev:	21.76
CV:	17.5%

Key	Area	% Area
73.06 - 82.78	2.33 acre	1.89 %
82.78 - 92.49	4.13 acre	3.36 %
92.49 - 102.2	11.17 acre	9.07 %
102.2 - 111.92	15.46 acre	12.55 %
111.92 - 121.63	19.33 acre	15.7 %
121.63 - 131.34	14.42 acre	11.71 %
131.34 - 141.06	17.81 acre	14.46 %
141.06 - 150.77	15.88 acre	12.9 %
150.77 - 160.48	6.8 acre	5.52 %
160.48 - 170.2	0.31 acre	0.26 %
170.2 - 179.91	0.3 acre	0.24 %
179.91 - 219.65	1.65 acre	1.34 %

Soil S Mehlich 3

Grower: JAC Farms
Farm: David Compton
Field: Paden W. Horton
Season: 2019
Area: 123.15 acre
Last sampled: 09/01/2019

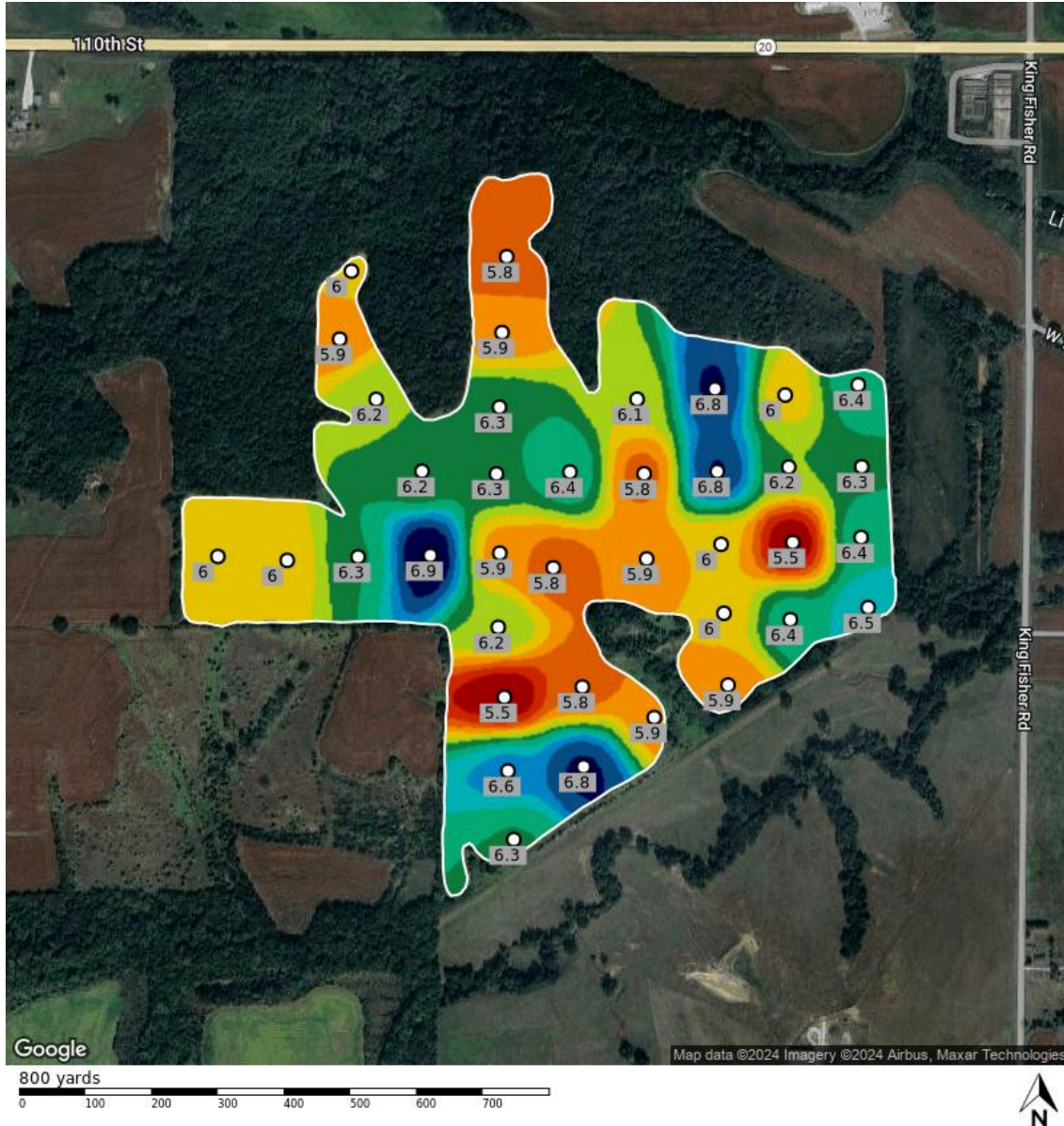


Min:	5.02
Max:	16.81
Average:	7.38
Std. Dev:	1.76
CV:	23.81%

Key	Area	% Area
■ 5.02 - 5.65	5.05 acre	4.1 %
■ 5.65 - 6.29	22.08 acre	17.93 %
■ 6.29 - 6.93	12.74 acre	10.35 %
■ 6.93 - 7.56	31.03 acre	25.2 %
■ 7.56 - 8.2	25.44 acre	20.65 %
■ 8.2 - 8.84	5.37 acre	4.36 %
■ 8.84 - 9.47	2.61 acre	2.12 %
■ 9.47 - 10.11	0.39 acre	0.32 %
■ 10.11 - 10.75	0.33 acre	0.27 %
■ 10.75 - 11.38	0.3 acre	0.24 %
■ 11.38 - 12.02	0.27 acre	0.22 %
■ 12.02 - 16.81	3.97 acre	3.22 %

Soil pH

Grower: JAC Farms
 Farm: David Compton
 Field: Paden W. Horton
 Season: 2023
 Area: 123.15 acre
 Last sampled: 09/01/2023

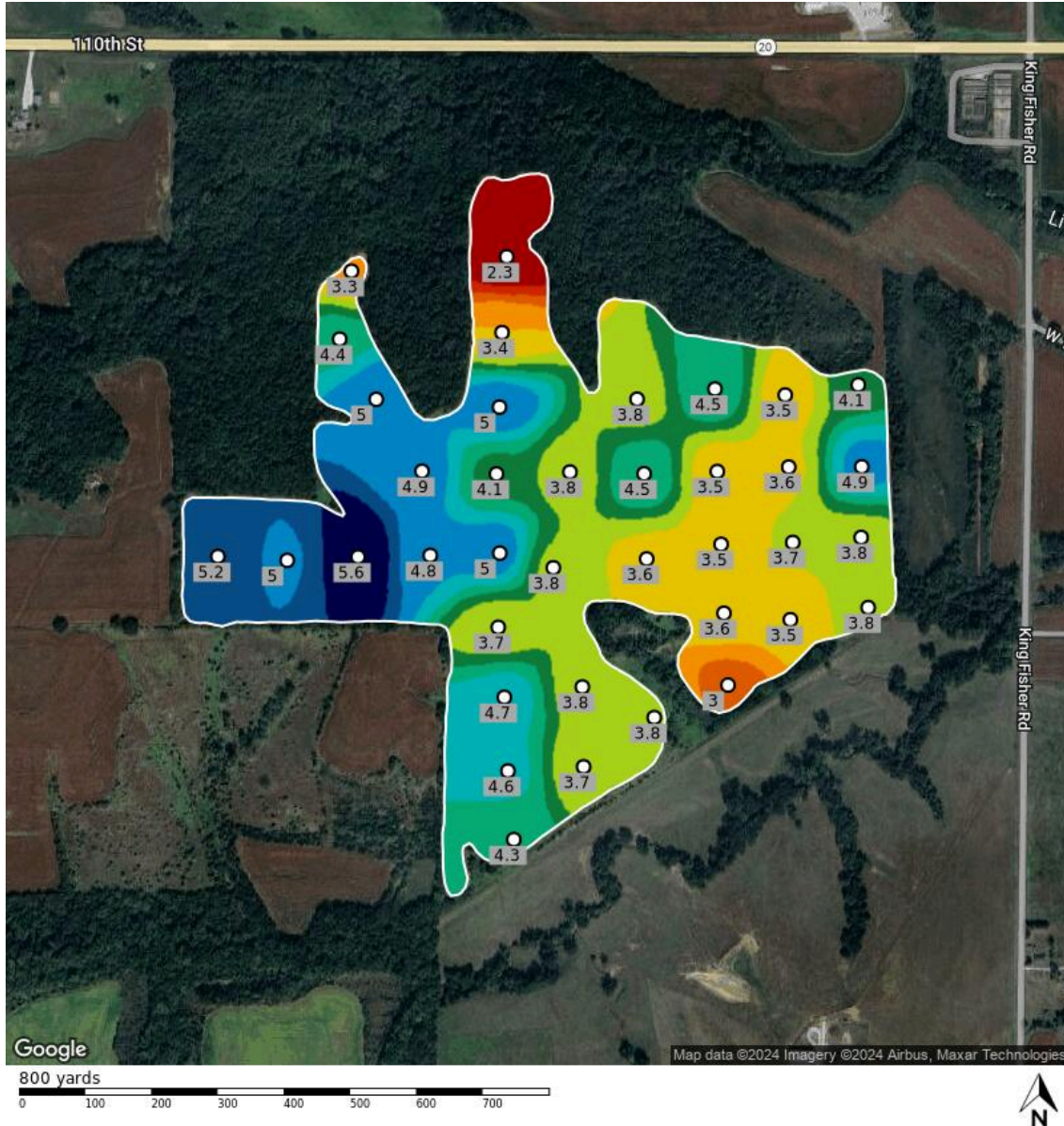


Min:	5.51
Max:	6.88
Average:	6.16
Std. Dev:	0.27
CV:	4.45%

Key	Area	% Area
■ 5.51 - 5.63	2.07 acre	1.68 %
■ 5.63 - 5.74	1.64 acre	1.34 %
■ 5.74 - 5.86	10.11 acre	8.21 %
■ 5.86 - 5.97	15.53 acre	12.61 %
■ 5.97 - 6.09	18.44 acre	14.97 %
■ 6.09 - 6.2	14.13 acre	11.47 %
■ 6.2 - 6.31	19.15 acre	15.55 %
■ 6.31 - 6.43	12.04 acre	9.78 %
■ 6.43 - 6.54	5.3 acre	4.3 %
■ 6.54 - 6.66	4 acre	3.25 %
■ 6.66 - 6.77	4.95 acre	4.02 %
■ 6.77 - 6.88	2.23 acre	1.81 %

Soil OM

Grower: JAC Farms
 Farm: David Compton
 Field: Paden W. Horton
 Season: 2023
 Area: 123.15 acre
 Last sampled: 09/01/2023

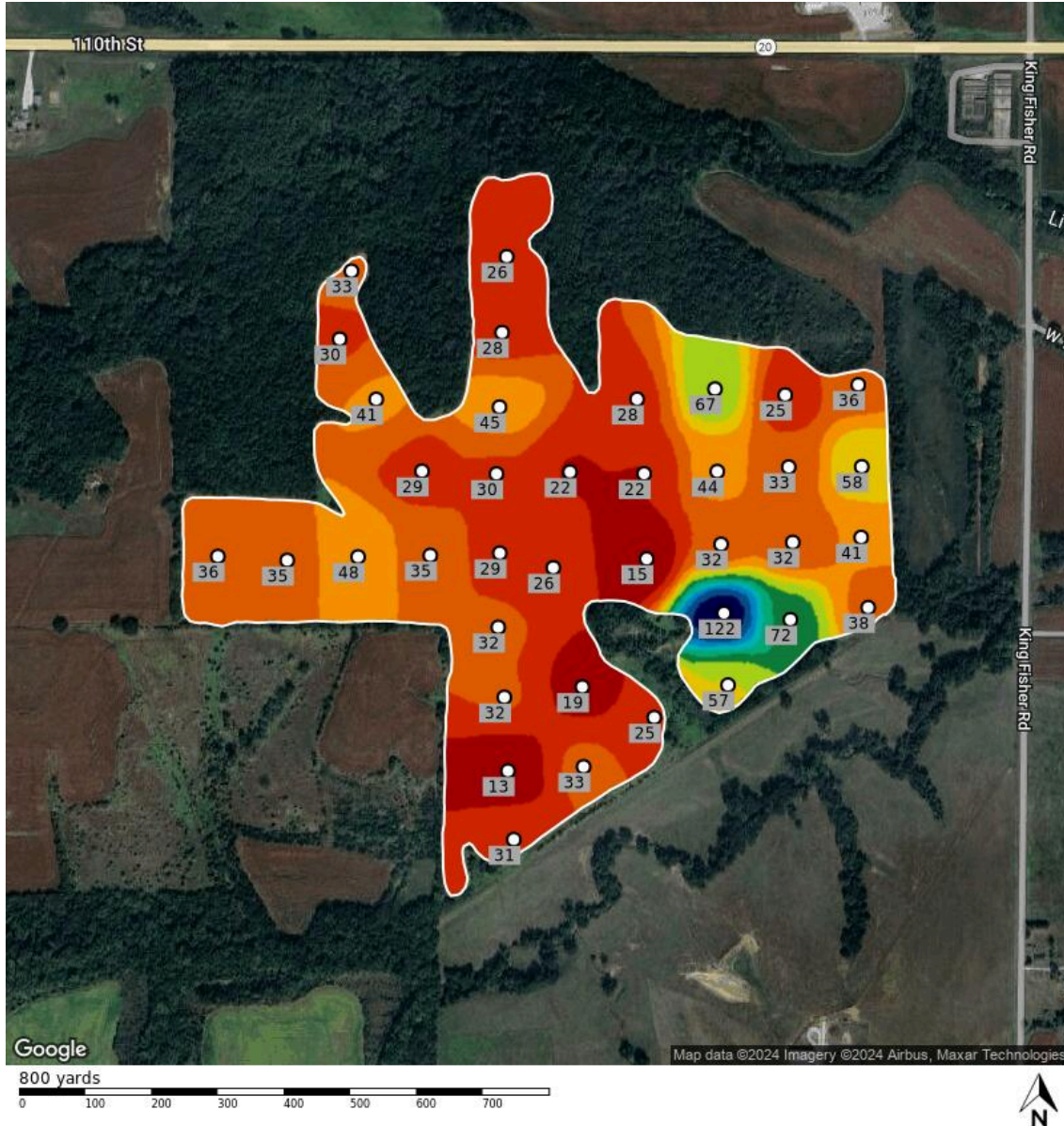


Min:	2.31
Max:	5.59
Average:	4.15
Std. Dev:	0.68
CV:	16.44%

Key	Area	% Area
2.31 - 2.58	3.71 acre	3.01 %
2.58 - 2.85	0.33 acre	0.27 %
2.85 - 3.13	1.49 acre	1.21 %
3.13 - 3.4	2.45 acre	1.99 %
3.4 - 3.67	17.39 acre	14.12 %
3.67 - 3.95	26.11 acre	21.2 %
3.95 - 4.22	10.69 acre	8.68 %
4.22 - 4.49	12.84 acre	10.43 %
4.49 - 4.77	9.35 acre	7.6 %
4.77 - 5.04	13.43 acre	10.9 %
5.04 - 5.32	8.36 acre	6.79 %
5.32 - 5.59	3.45 acre	2.81 %

Soil P Mehlich 3

Grower: JAC Farms
 Farm: David Compton
 Field: Paden W. Horton
 Season: 2023
 Area: 123.15 acre
 Last sampled: 09/01/2023

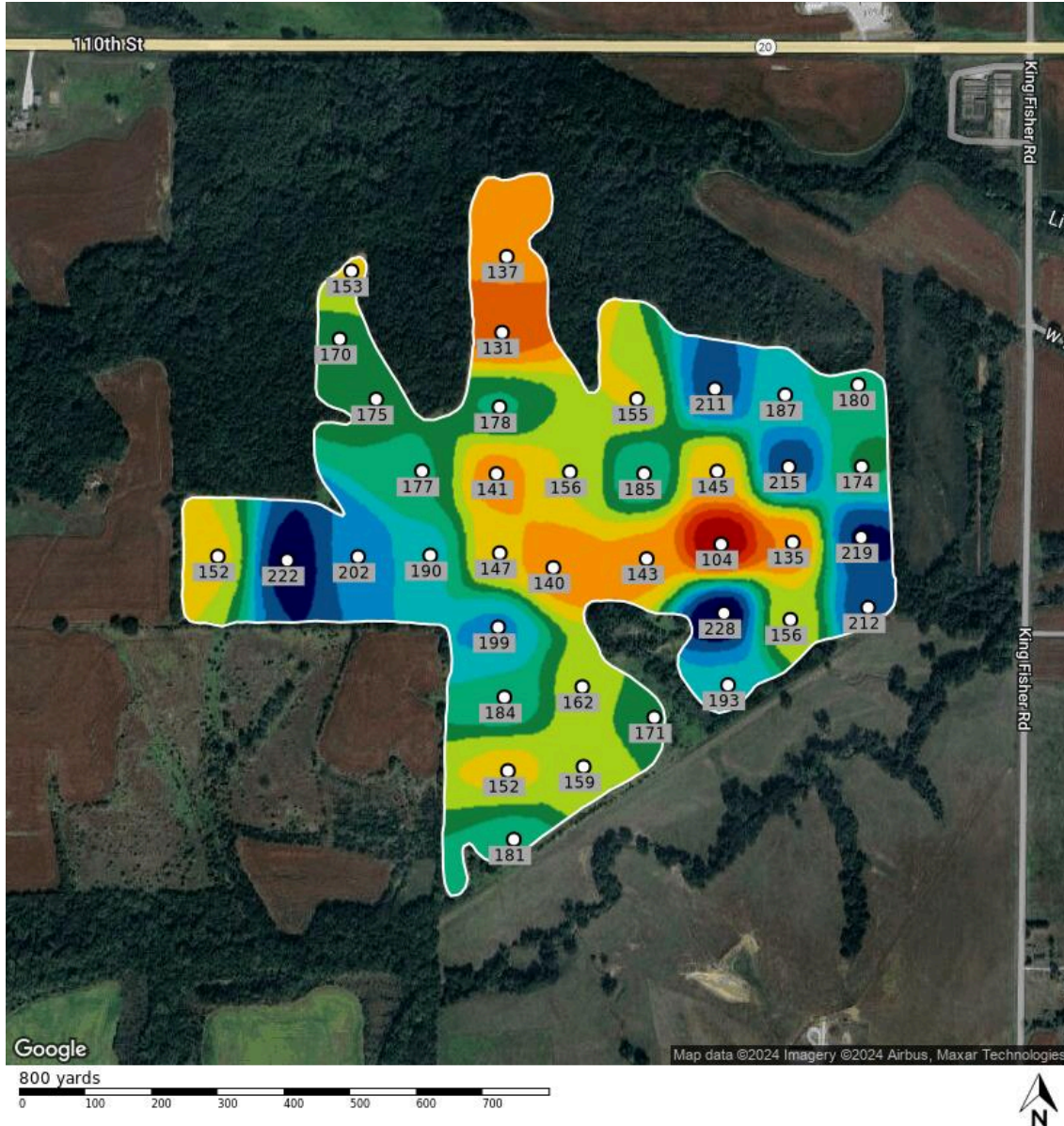


Min:	13.39
Max:	119.99
Average:	36.07
Std. Dev:	15.24
CV:	42.26%

Key	Area	% Area
13.39 - 22.27	10.04 acre	8.15 %
22.27 - 31.15	36.8 acre	29.88 %
31.15 - 40.04	36.14 acre	29.34 %
40.04 - 48.92	14.01 acre	11.38 %
48.92 - 57.8	4.23 acre	3.43 %
57.8 - 66.69	3.42 acre	2.78 %
66.69 - 75.57	1.95 acre	1.59 %
75.57 - 84.45	0.71 acre	0.58 %
84.45 - 93.34	0.5 acre	0.4 %
93.34 - 102.22	0.46 acre	0.38 %
102.22 - 111.1	0.57 acre	0.46 %
111.1 - 119.99	0.77 acre	0.62 %

Soil K Mehlich 3

Grower: JAC Farms
 Farm: David Compton
 Field: Paden W. Horton
 Season: 2023
 Area: 123.15 acre
 Last sampled: 09/01/2023

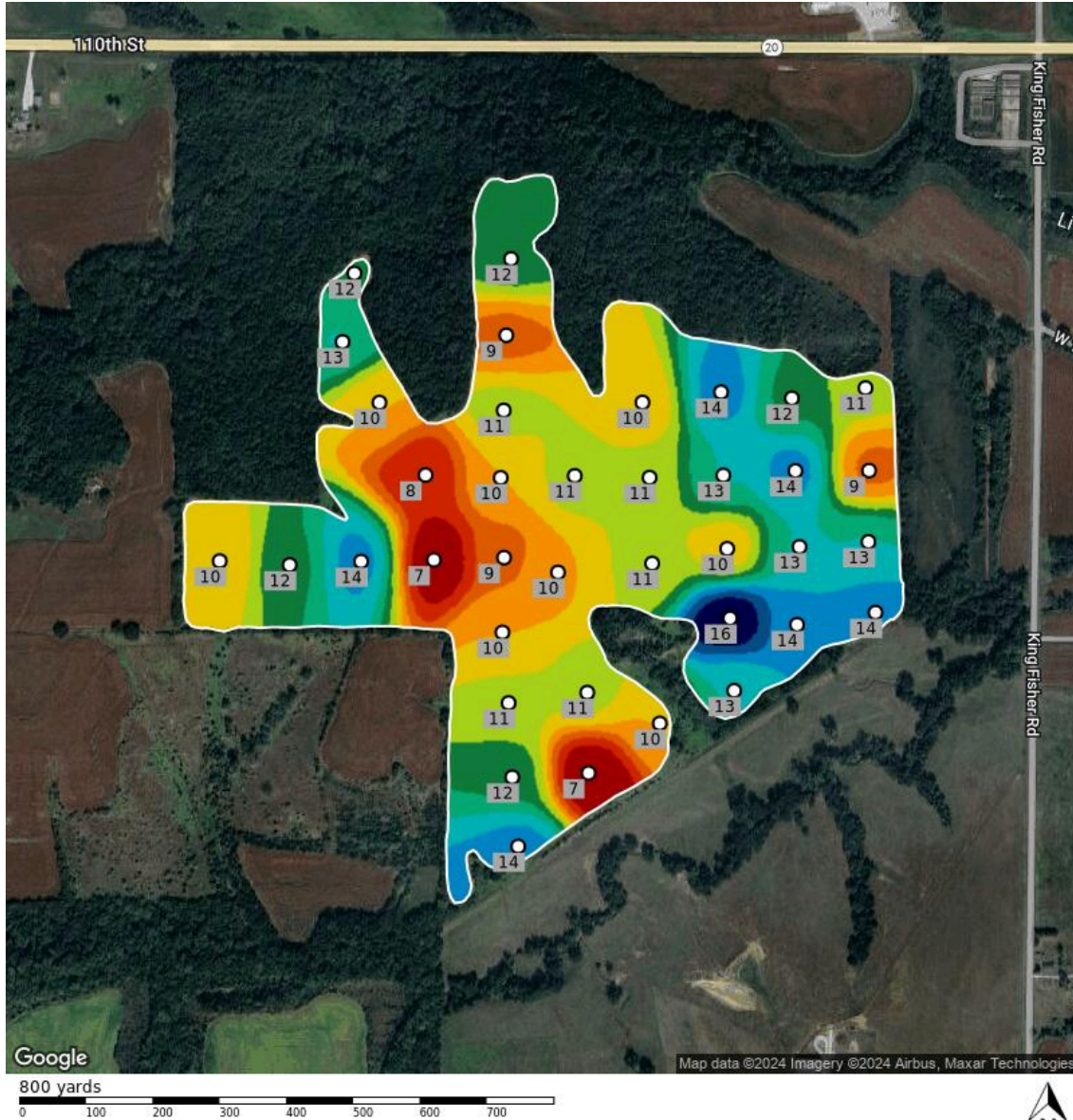


Min:	105.96
Max:	225.75
Average:	171.25
Std. Dev:	23.39
CV:	13.66%

Key	Area	% Area
105.96 - 115.94	0.87 acre	0.71 %
115.94 - 125.92	0.74 acre	0.6 %
125.92 - 135.9	3.4 acre	2.76 %
135.9 - 145.89	11.81 acre	9.59 %
145.89 - 155.87	12.52 acre	10.16 %
155.87 - 165.85	19.06 acre	15.48 %
165.85 - 175.84	16.3 acre	13.24 %
175.84 - 185.82	14.81 acre	12.02 %
185.82 - 195.8	11.64 acre	9.45 %
195.8 - 205.78	8.1 acre	6.58 %
205.78 - 215.77	7.01 acre	5.69 %
215.77 - 225.75	3.34 acre	2.71 %

Soil S Mehlich 3

Grower: JAC Farms
Farm: David Compton
Field: Paden W. Horton
Season: 2023
Area: 123.15 acre
Last sampled: 09/01/2023



Min:	7.06
Max:	15.9
Average:	11.22
Std. Dev:	1.73
CV:	15.45%

Key	Area	% Area
7.06 - 7.8	3.13 acre	2.54 %
7.8 - 8.53	4.03 acre	3.27 %
8.53 - 9.27	5.95 acre	4.83 %
9.27 - 10.01	10.42 acre	8.46 %
10.01 - 10.74	21.26 acre	17.27 %
10.74 - 11.48	19.94 acre	16.19 %
11.48 - 12.21	13.33 acre	10.82 %
12.21 - 12.95	9.2 acre	7.47 %
12.95 - 13.69	11.6 acre	9.42 %
13.69 - 14.42	8.68 acre	7.05 %
14.42 - 15.16	0.88 acre	0.72 %
15.16 - 15.9	1.17 acre	0.95 %