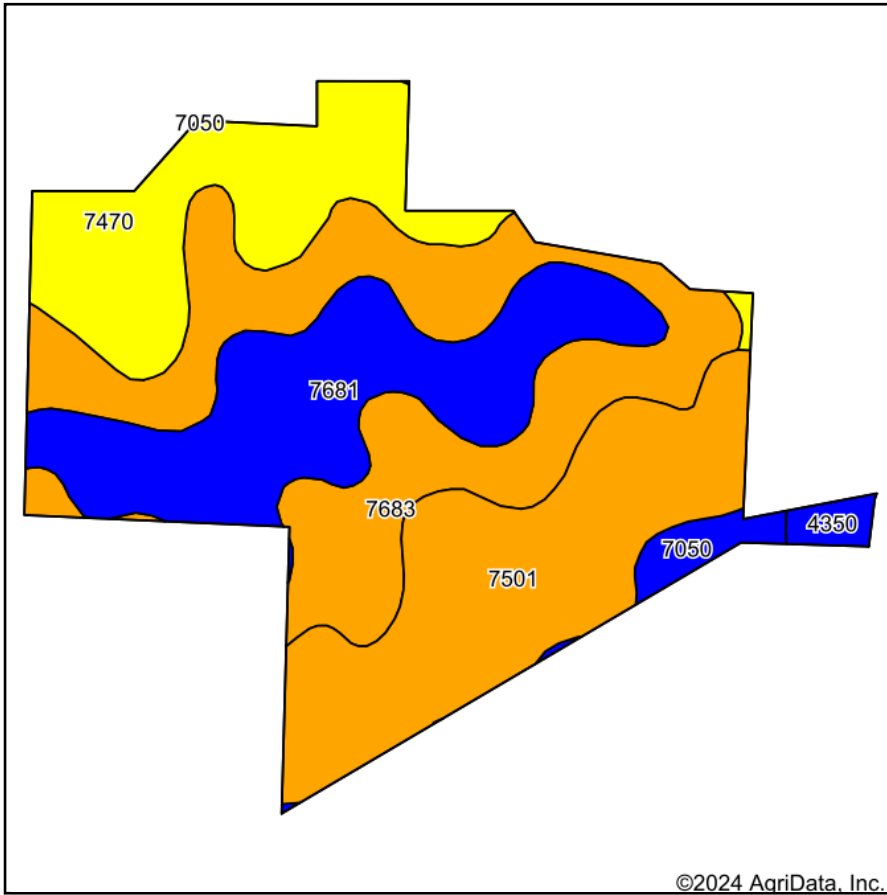
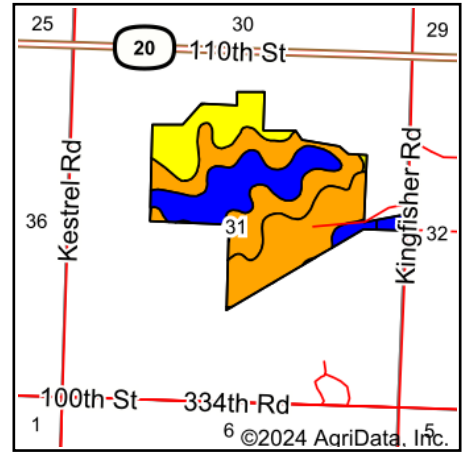


Soils Map



Soils data provided by USDA and NRCS.



State: **Kansas**
 County: **Brown**
 Location: **31-4S-17E**
 Township: **Mission**
 Acres: **144.5**
 Date: **7/30/2024**



Maps Provided By:



© AgriData, Inc. 2023

www.AgriDataInc.com



Area Symbol: KS013, Soil Area Version: 27

Code	Soil Description	Acres	Percent of field	Non-Irr Class Legend	Non-Irr Class *c	Irr Class *c	Range Production (lbs/acre/yr)	Alfalfa hay Tons	Corn Bu	Grain sorghum Bu	Smooth brome grass AUM	Soybeans Bu	Winter wheat Bu	*n NCCPI Soybeans
7683	Wymore silty clay loam, 3 to 6 percent slopes	45.21	31.3%		IIIe	IIIe	3800							58
7501	Pawnee clay loam, 4 to 8 percent slopes, eroded	36.12	25.0%		IIIe		3883							39
7681	Wymore silty clay loam, 1 to 3 percent slopes	32.40	22.4%		Ile	Ile	3800							58
7470	Padonia-Martin silty clay loams, 5 to 9 percent slopes	25.98	18.0%		IVe		3840	4	99	74	5	28	32	51
7050	Kennebec silt loam, occasionally flooded	3.10	2.1%		IIw		4361		114			38		82
4350	Chase silty clay loam, rarely flooded	1.69	1.2%		IIw	IIw	4365							68
Weighted Average					2.92	*-	3846.6	0.7	20.2	13.3	0.9	5.8	5.8	*n 52.6

*n: The aggregation method is "Weighted Average using all components"

*c: Using Capabilities Class Dominant Condition Aggregation Method

*- Irr Class weighted average cannot be calculated on the current soils data due to missing data.

Soils data provided by USDA and NRCS.