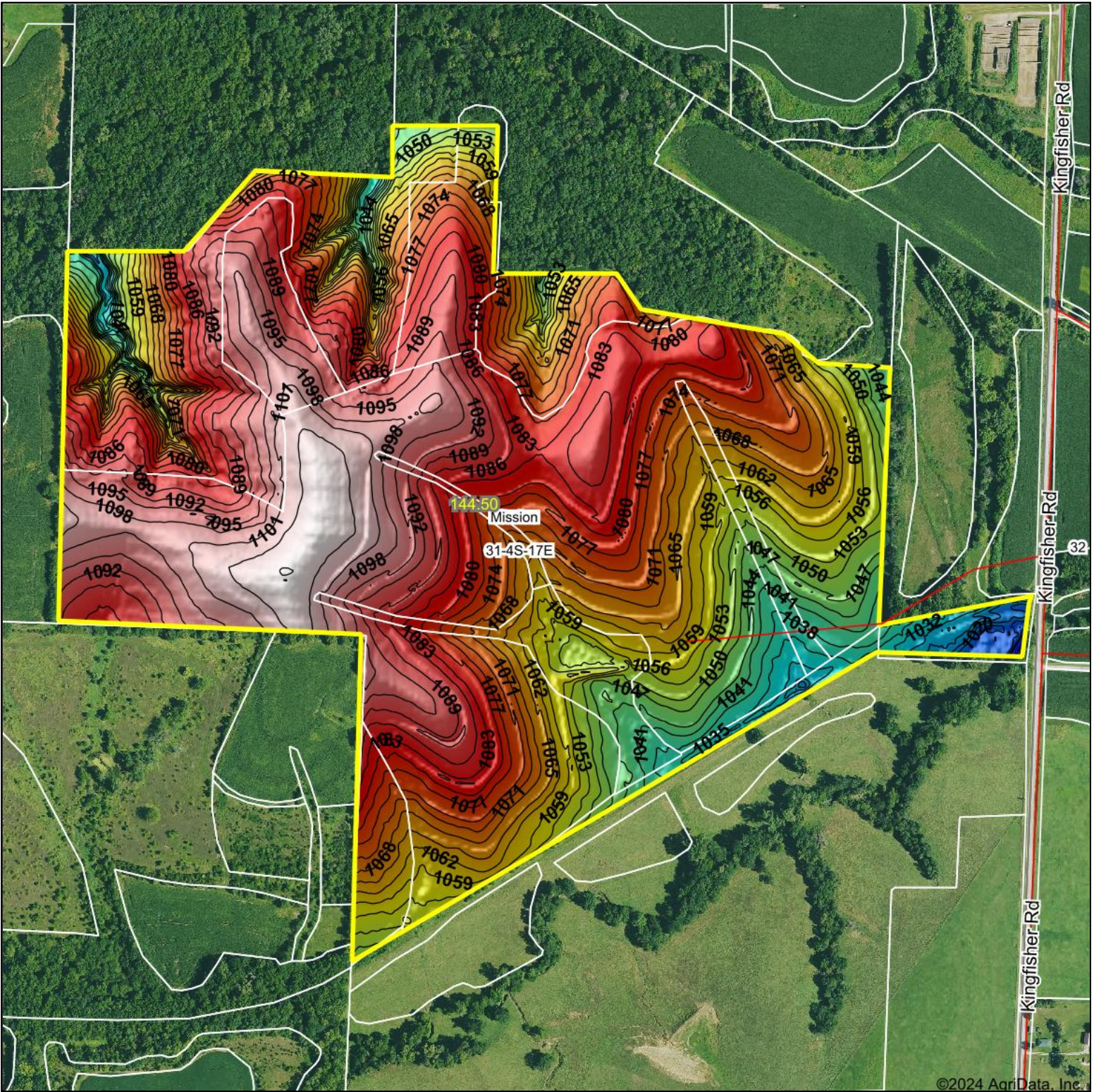


Topography Hillshade



<p>Low Elevation High</p>	<p>Source: USGS 3 meter dem Interval(ft): 3 Min: 1,006.6 Max: 1,106.9 Range: 100.3 Average: 1,073.7 Standard Deviation: 19 ft</p>	<p>0ft 610ft 1219ft</p> <p> 7/30/2024 31-4S-17E Brown County Kansas Boundary Center: 39° 39' 40.18, -95° 33' 10.7 </p>
---------------------------	---	---



Maps Provided By:



© AgriData, Inc. 2023 www.AgriDataInc.com

Field borders provided by Farm Service Agency as of 5/21/2008.

©2024 AgriData, Inc.