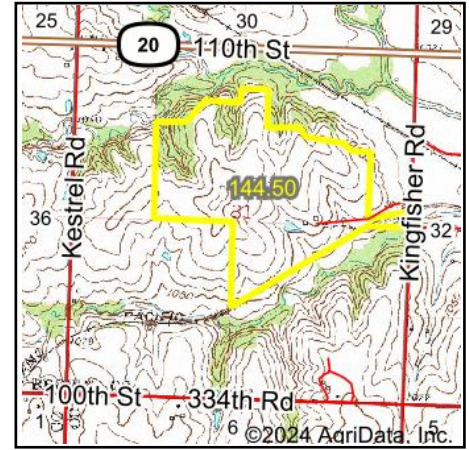
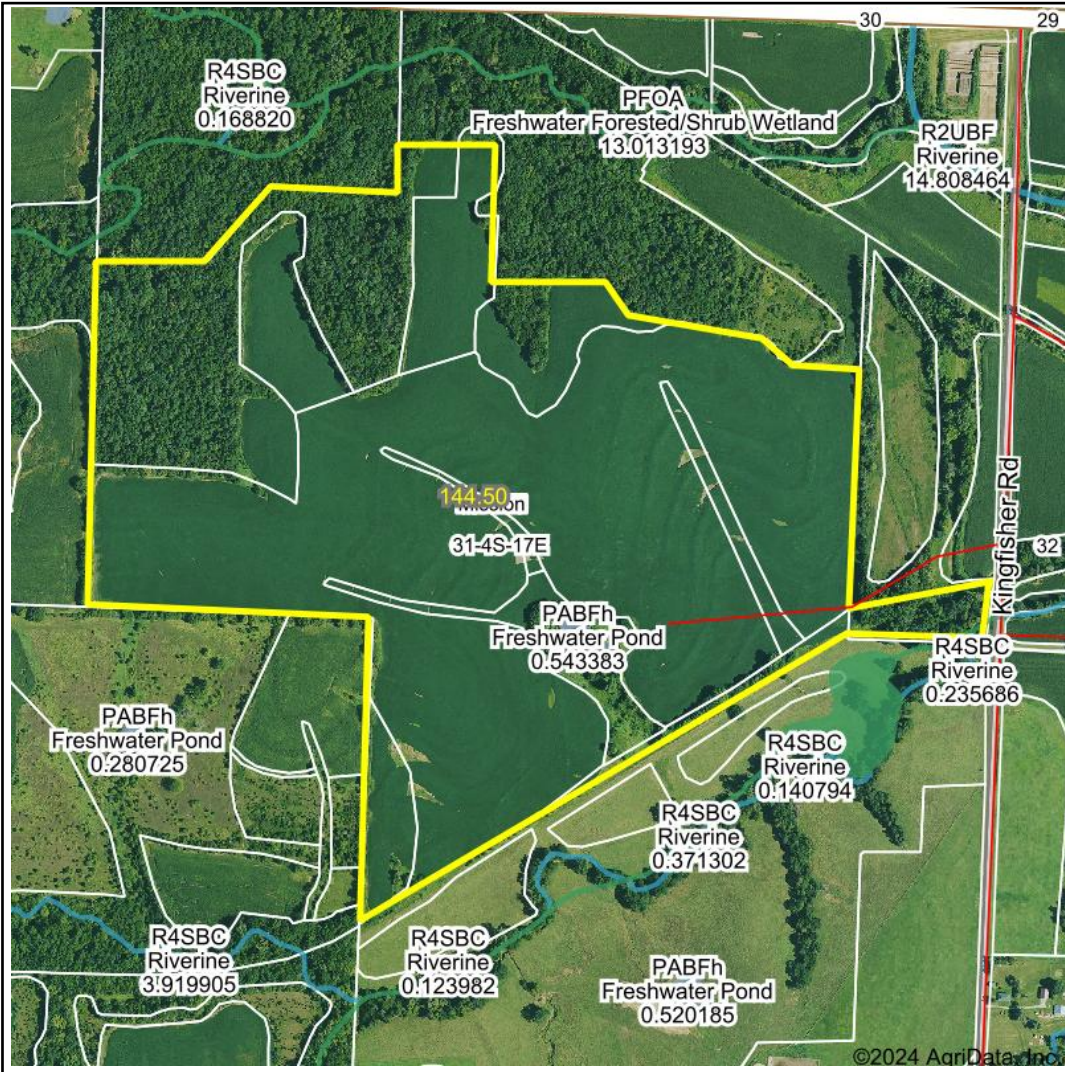


Wetlands Map



State: Kansas
Location: 31-4S-17E
County: Brown
Township: Mission
Date: 7/30/2024



Maps Provided By:

 © AgriData, Inc. 2023 www.AgriDataInc.com



0ft 930ft 1861ft

Classification Code	Type	Acres
PABFh	Freshwater Pond	0.54
PFOA	Freshwater Forested/Shrub Wetland	0.05
R4SBC	Riverine	0.01
Total Acres		0.60

Data Source: National Wetlands Inventory website. U.S. DoI, Fish and Wildlife Service, Washington, D.C. <http://www.fws.gov/wetlands/>