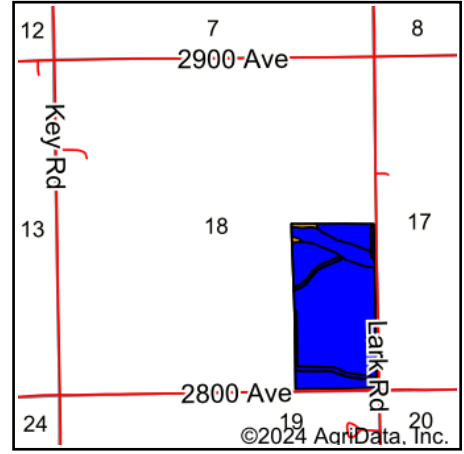
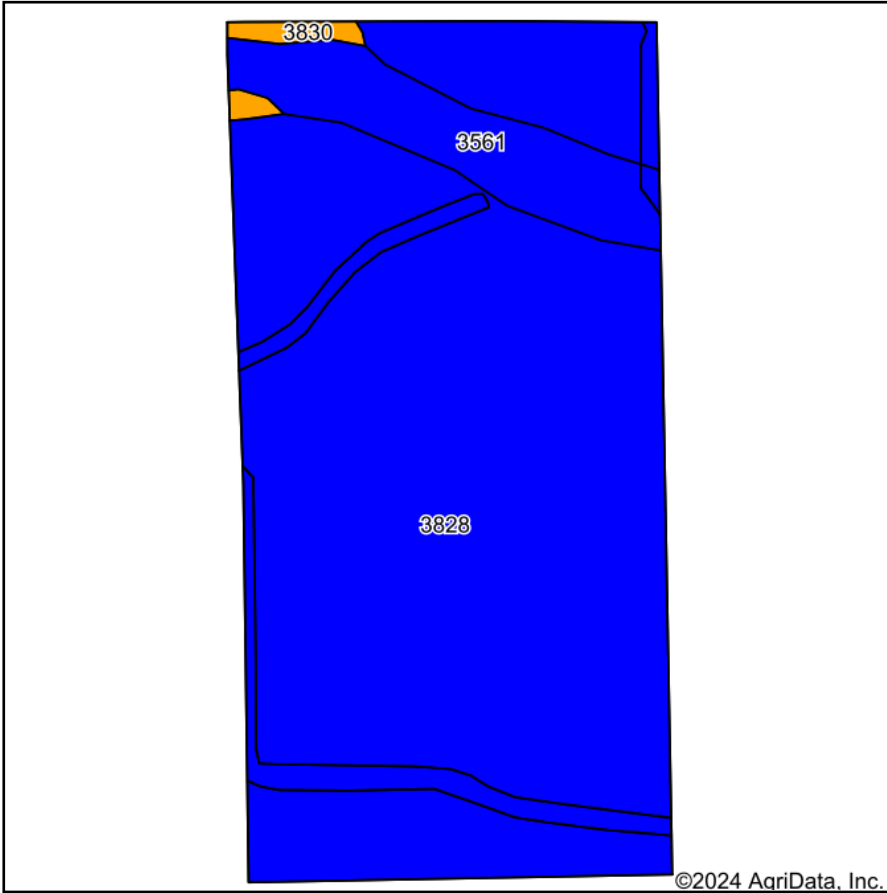


# Soils Map



State: **Kansas**  
 County: **Dickinson**  
 Location: **18-12S-3E**  
 Township: **Hayes**  
 Acres: **77.58**  
 Date: **9/17/2024**



Maps Provided By:



© AgriData, Inc. 2023

www.AgriDataInc.com



Soils data provided by USDA and NRCS.

©2024 AgriData, Inc.

Area Symbol: KS041, Soil Area Version: 22

Code	Soil Description	Acres	Percent of field	Non-Irr Class Legend	Non-Irr Class *c	Irr Class *c	Range Production (lbs/acre/yr)	*n NCCPI Soybeans
3828	Crete silty clay loam, 1 to 3 percent slopes	69.59	89.7%		Ile	Ile	3645	63
3561	Hobbs silt loam, occasionally flooded	7.17	9.2%		Ilw	Ilw	5845	79
3830	Crete silty clay loam, 3 to 7 percent slopes	0.82	1.1%		Ille	Ille	3655	62
<b>Weighted Average</b>					<b>2.01</b>	<b>2.01</b>	<b>3848.4</b>	<b>*n 64.5</b>

\*n: The aggregation method is "Weighted Average using all components"

\*c: Using Capabilities Class Dominant Condition Aggregation Method