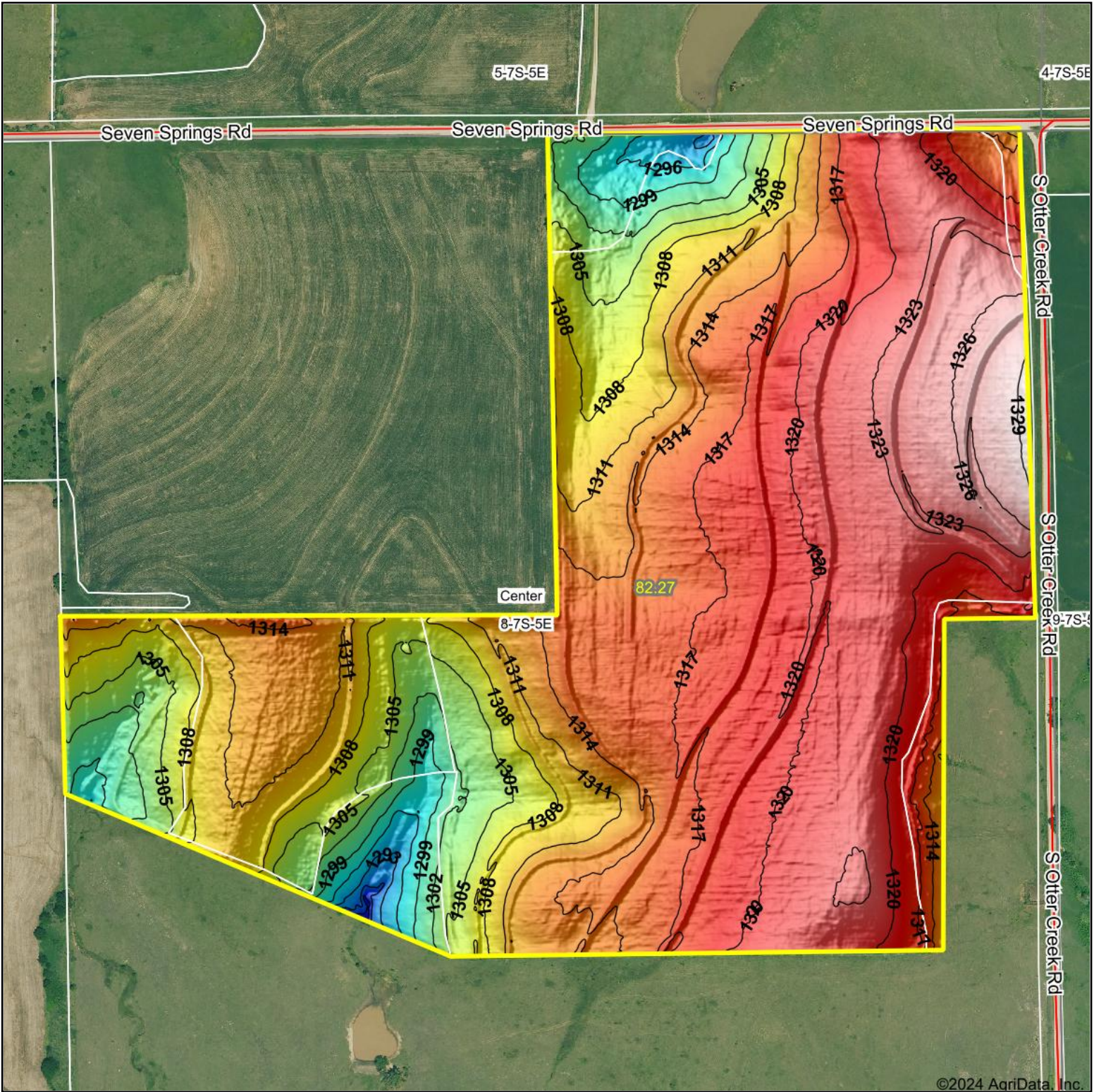


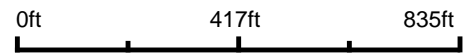
Topography Hillshade



©2024 AgriData, Inc.



Source: USGS 1 meter dem
 Interval(ft): 3
 Min: 1,285.6
 Max: 1,329.7
 Range: 44.1
 Average: 1,313.9
 Standard Deviation: 7.61 ft



10/28/2024

8-7S-5E
Riley County
Kansas

Boundary Center: 39° 27' 47.56, -96° 53' 27.04



Maps Provided By:



© AgriData, Inc. 2023 www.AgriDataInc.com

Field borders provided by Farm Service Agency as of 5/21/2008.