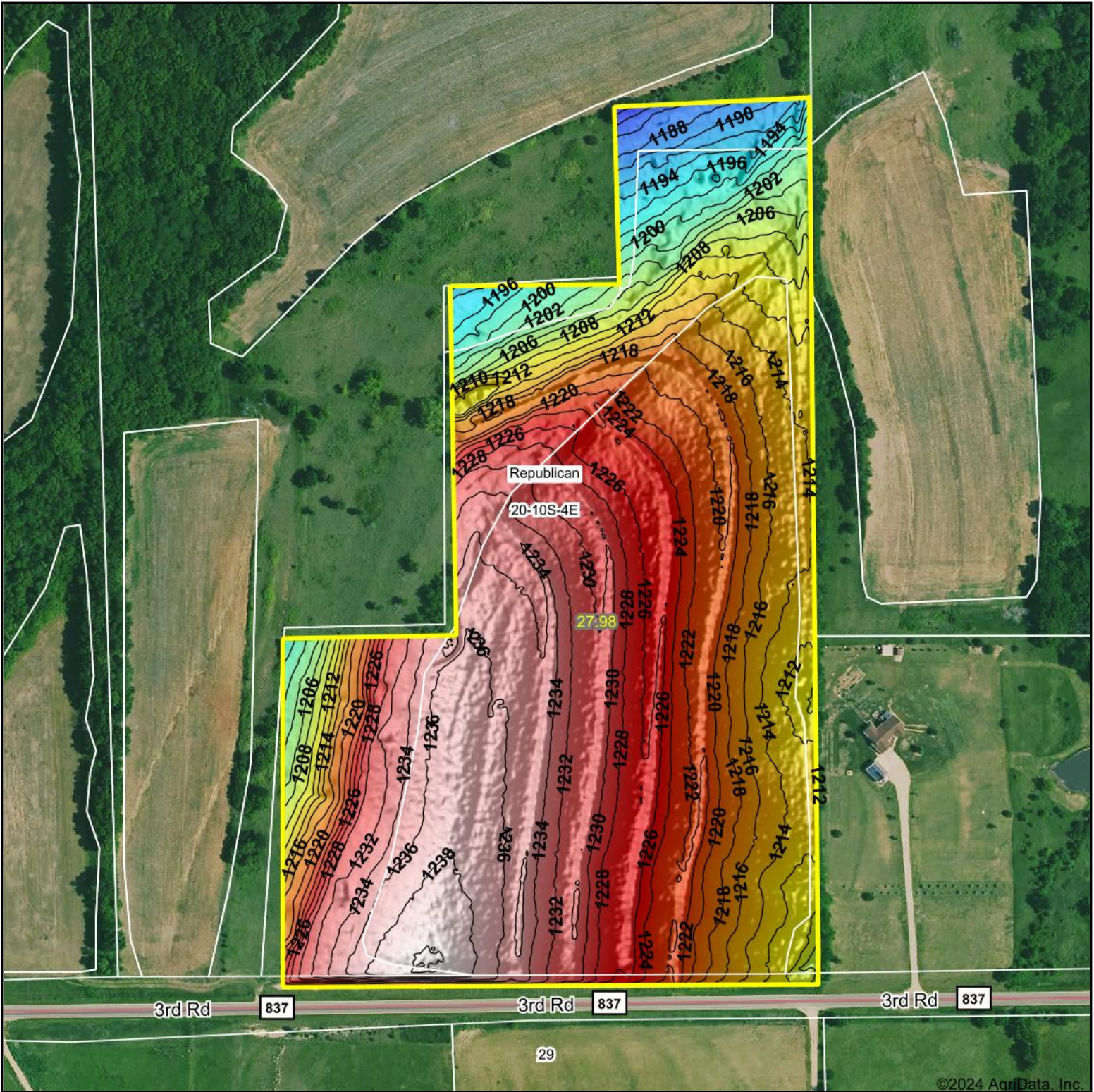


Topography Hillshade



<p>Low Elevation High</p>	<p>Source: USGS 1 meter dem</p> <p>Interval(ft): 2</p> <p>Min: 1,181.4</p> <p>Max: 1,240.4</p> <p>Range: 59.0</p> <p>Average: 1,221.4</p> <p>Standard Deviation: 12.11 ft</p>	<p>0ft 291ft 582ft</p> <p>20-10S-4E Clay County Kansas</p> <p>9/25/2024</p> <p>Boundary Center: 39° 9' 51.15, -97° 0' 34.64</p>
---------------------------	---	---



Maps Provided By:



© AgriData, Inc. 2023 www.AgriDataInc.com

Field borders provided by Farm Service Agency as of 5/21/2008.