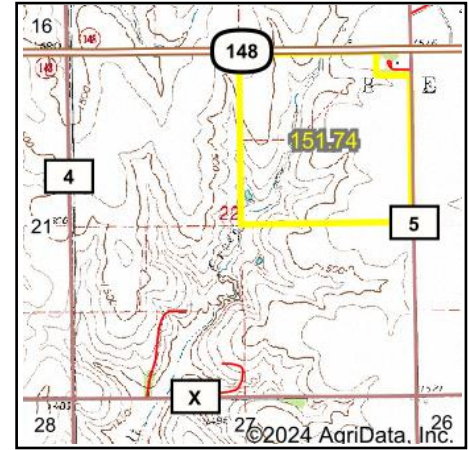
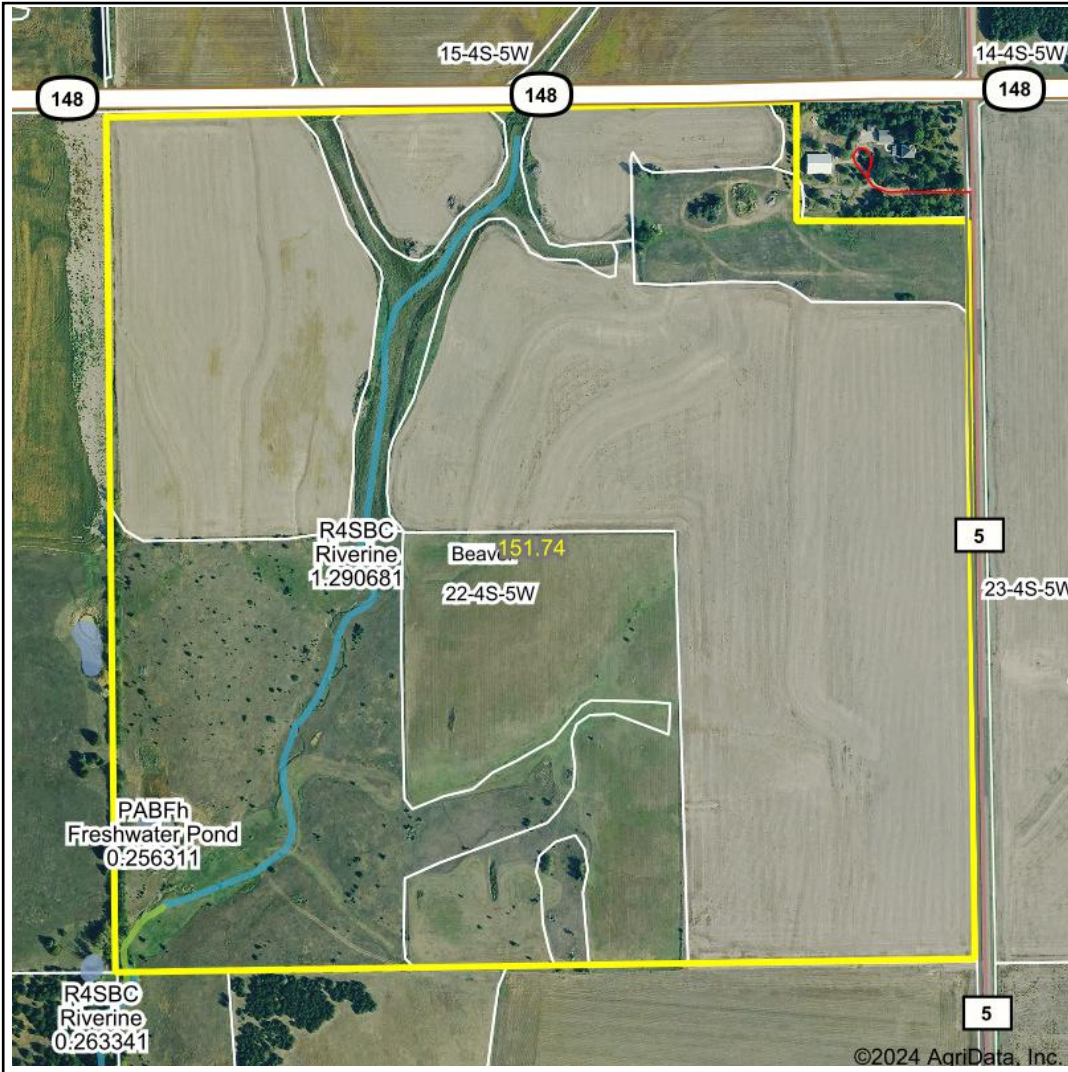


# Wetlands Map



**State:** Kansas  
**Location:** 22-4S-5W  
**County:** Republic  
**Township:** Beaver  
**Date:** 9/26/2024



Maps Provided By:



© AgriData, Inc. 2023 [www.AgriDataInc.com](http://www.AgriDataInc.com)



0ft 669ft 1338ft

Classification Code	Type	Acres
R4SBC	Riverine	1.30
PABFh	Freshwater Pond	0.26
PEM1A	Freshwater Emergent Wetland	0.12
Total Acres		1.68

Data Source: National Wetlands Inventory website. U.S. DoI, Fish and Wildlife Service, Washington, D.C. <http://www.fws.gov/wetlands/>