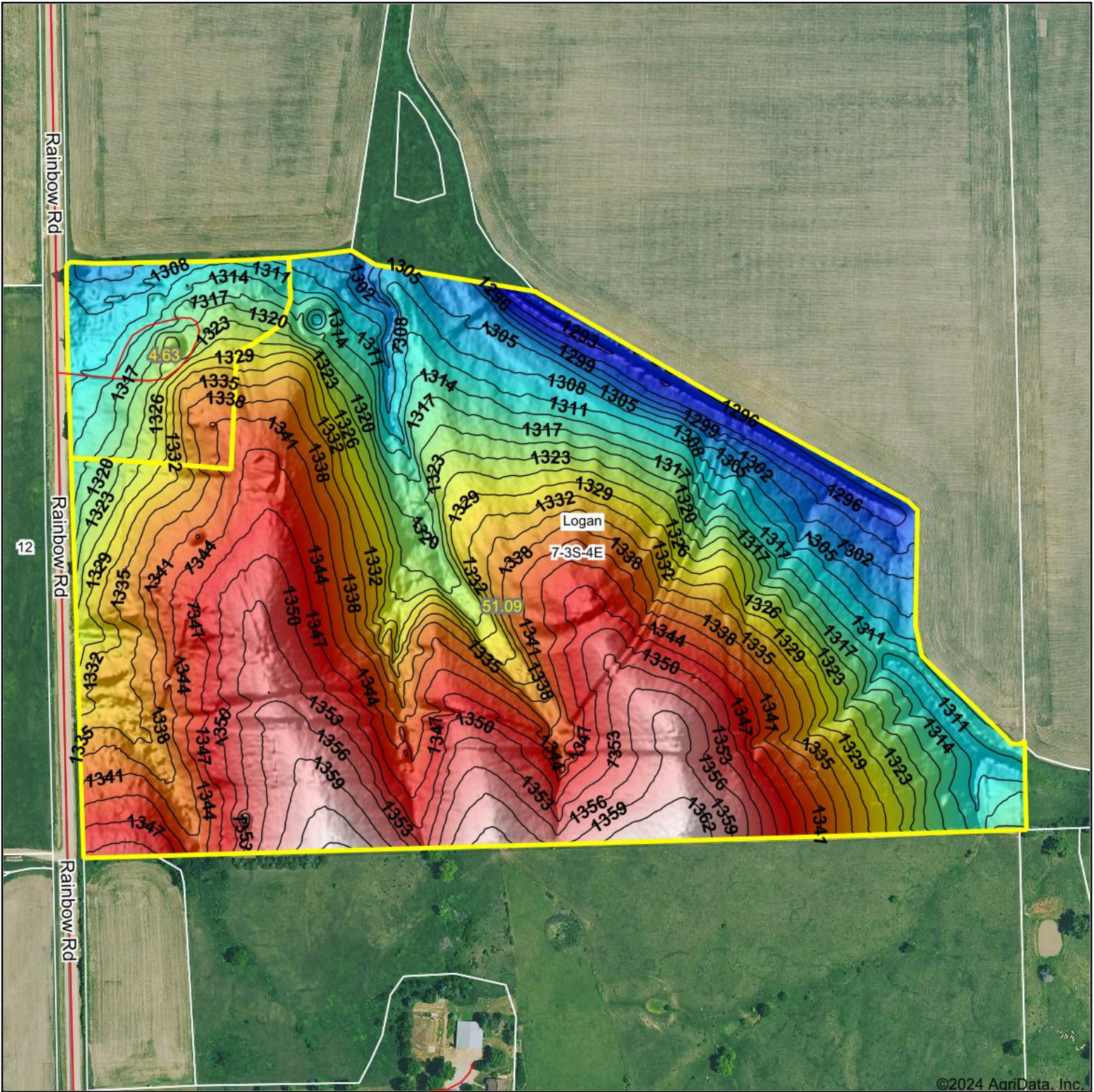
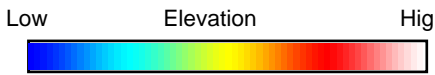


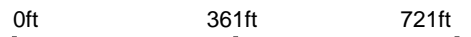
Topography Hillshade



©2024 AgriData, Inc.



Source: USGS 1 meter dem



Interval(ft): 3

Min: 1,291.7

Max: 1,365.8

Range: 74.1

Average: 1,331.5

Standard Deviation: 17.91 ft



8/22/2024

7-3S-4E
Washington County
Kansas

Boundary Center: 39° 48' 28.76, -97° 1' 33.92



Maps Provided By:



© AgriData, Inc. 2023 www.AgriDataInc.com

Field borders provided by Farm Service Agency as of 5/21/2008.