





# Opportunity Awaits!

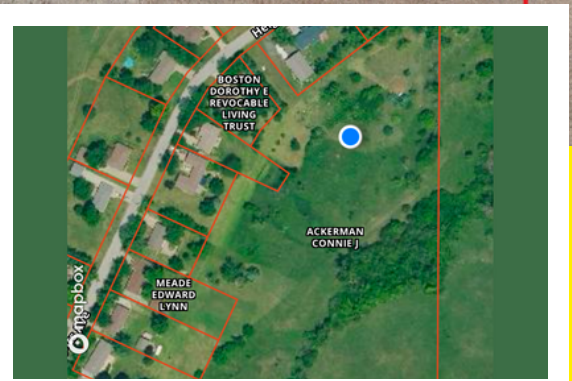


**0 HEIGHTS AVENUE, MARYSVILLE, KS**



## PROPERTY FEATURES




-  **9.27 +/- Acres on Edge of Town**
-  **Close Proximity to Hwy 36 & Marysville, KS**
-  **Mature Trees and Utilities to Property**
-  **Est. Taxes \$81.90**



**\$ 130,000**

# Jessica Leis, Broker



 **785.562.7817**  
 [jessica@midwestlandandhome.com](mailto:jessica@midwestlandandhome.com)  
 [www.MidwestLandandHome.com](http://www.MidwestLandandHome.com)