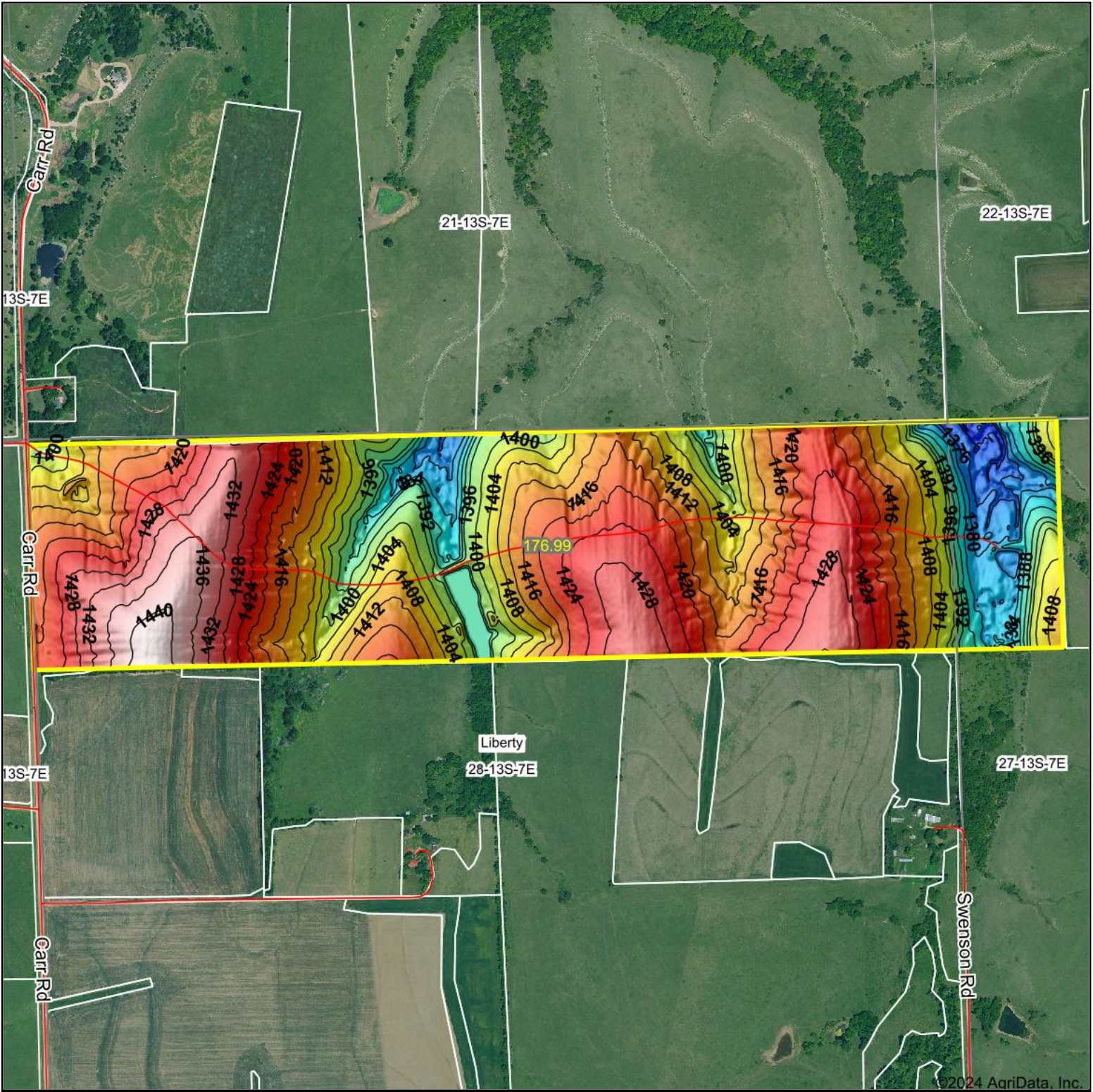


Topography Hillshade



<p>Low Elevation High</p>	<p>Source: USGS 3 meter dem Interval(ft): 4 Min: 1,366.4 Max: 1,442.7 Range: 76.3 Average: 1,412.1 Standard Deviation: 15.55 ft</p>	<p>0ft 892ft 1785ft</p> <p> 12/9/2024 28-13S-7E Geary County Kansas Boundary Center: 38° 53' 50.77, -96° 39' 29.1 </p>
---------------------------	---	---

Maps Provided By:

 CUSTOMIZED ONLINE MAPPING

 © AgriData, Inc. 2023 www.AgriDataInc.com

 Field borders provided by Farm Service Agency as of 5/21/2008.