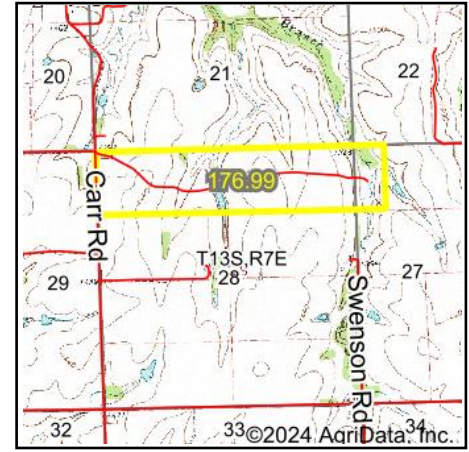
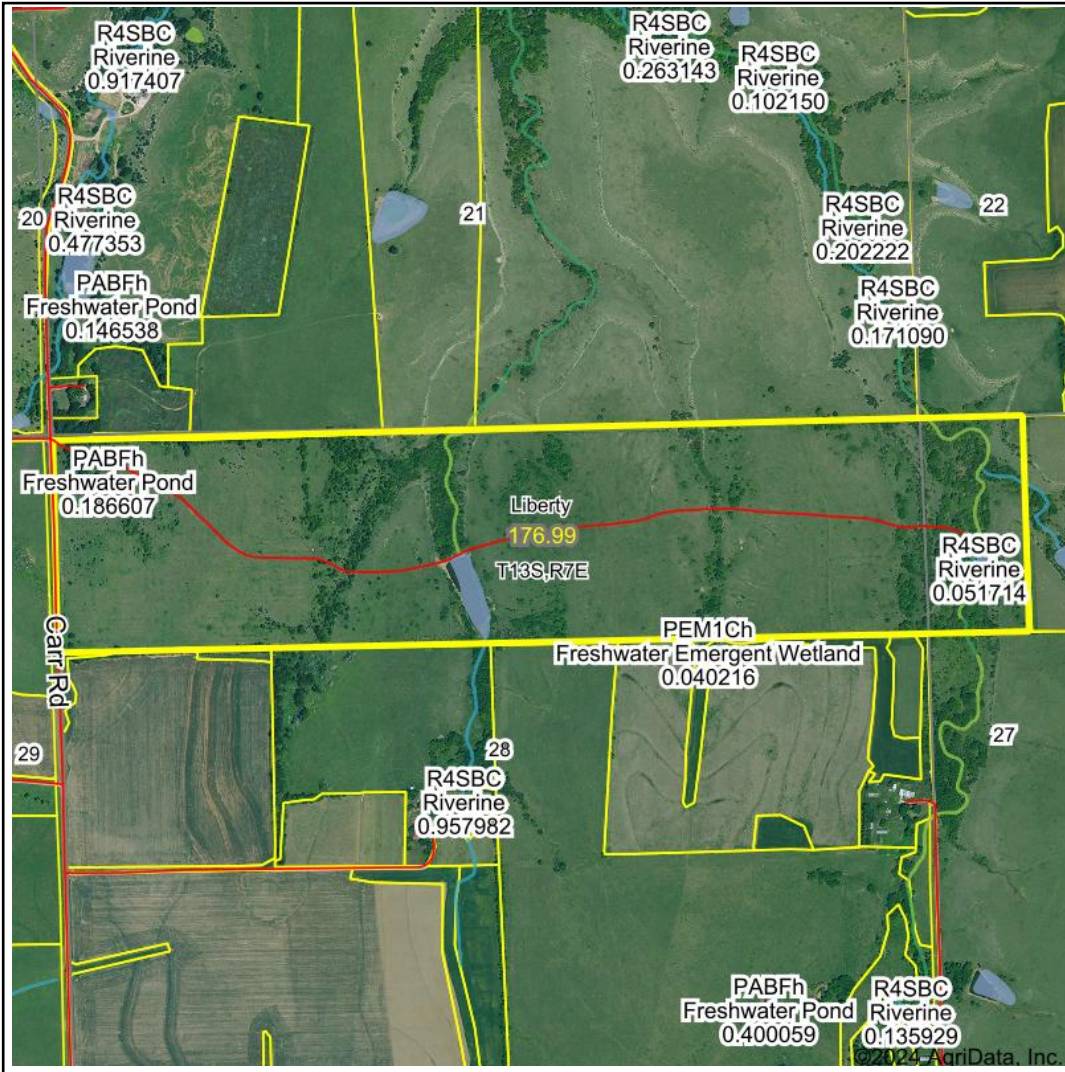


# Wetlands Map



**State:** Kansas  
**Location:** 28-13S-7E  
**County:** Geary  
**Township:** Liberty  
**Date:** 12/9/2024



Maps Provided By:



© AgriData, Inc. 2023 www.AgriDataInc.com



0ft 1342ft 2683ft

Classification Code	Type	Acres
PABFh	Freshwater Pond	1.96
PEM1A	Freshwater Emergent Wetland	0.91
R4SBC	Riverine	0.19
PEM1Ch	Freshwater Emergent Wetland	0.17
PFOA	Freshwater Forested/Shrub Wetland	0.04
R5UBH	Riverine	0.03
	Total Acres	3.30

Data Source: National Wetlands Inventory website. U.S. DoI, Fish and Wildlife Service, Washington, D.C. <http://www.fws.gov/wetlands/>