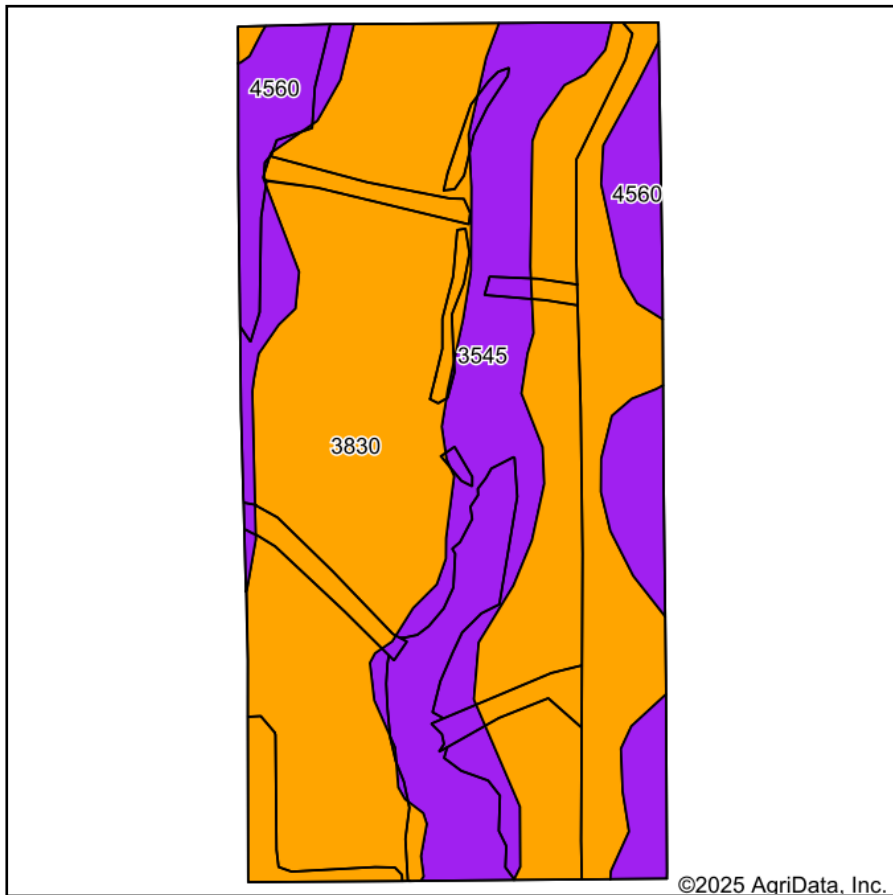
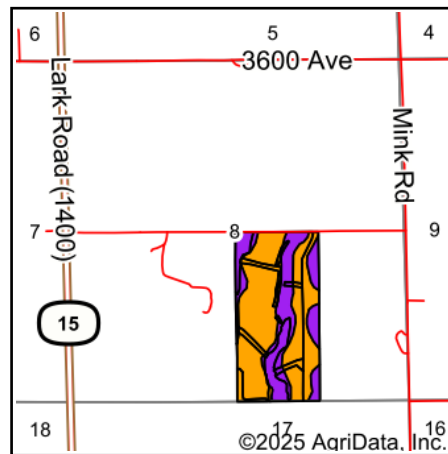


# Soils Map



Soils data provided by USDA and NRCS.



State: **Kansas**  
 County: **Dickinson**  
 Location: **8-11S-3E**  
 Township: **Sherman**  
 Acres: **77.29**  
 Date: **1/13/2025**



Maps Provided By:



Area Symbol: KS041, Soil Area Version: 23

Code	Soil Description	Acres	Percent of field	Non-Irr Class Legend	Non-Irr Class *c	Irr Class *c	Range Production (lbs/acre/yr)	*n NCCPI Soybeans
3830	Crete silty clay loam, 3 to 7 percent slopes	50.83	65.8%			Ille	3655	62
3545	Hobbs silt loam, channeled, frequently flooded	15.68	20.3%			Vw	5710	44
4560	Clime silty clay loam, 7 to 15 percent slopes	10.78	13.9%			Vle	3540	40
<b>Weighted Average</b>							<b>4055.9</b>	<b>*n 55.3</b>

\*n: The aggregation method is "Weighted Average using all components"

\*c: Using Capabilities Class Dominant Condition Aggregation Method

\*- Irr Class weighted average cannot be calculated on the current soils data due to missing data.