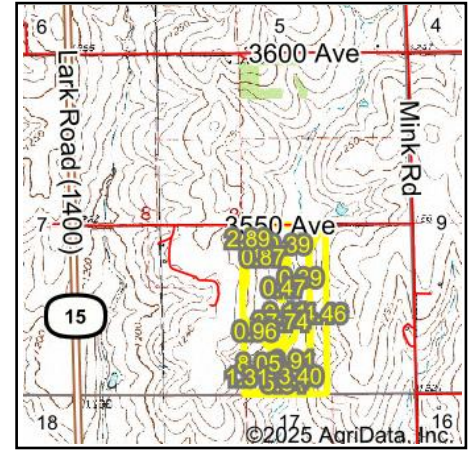
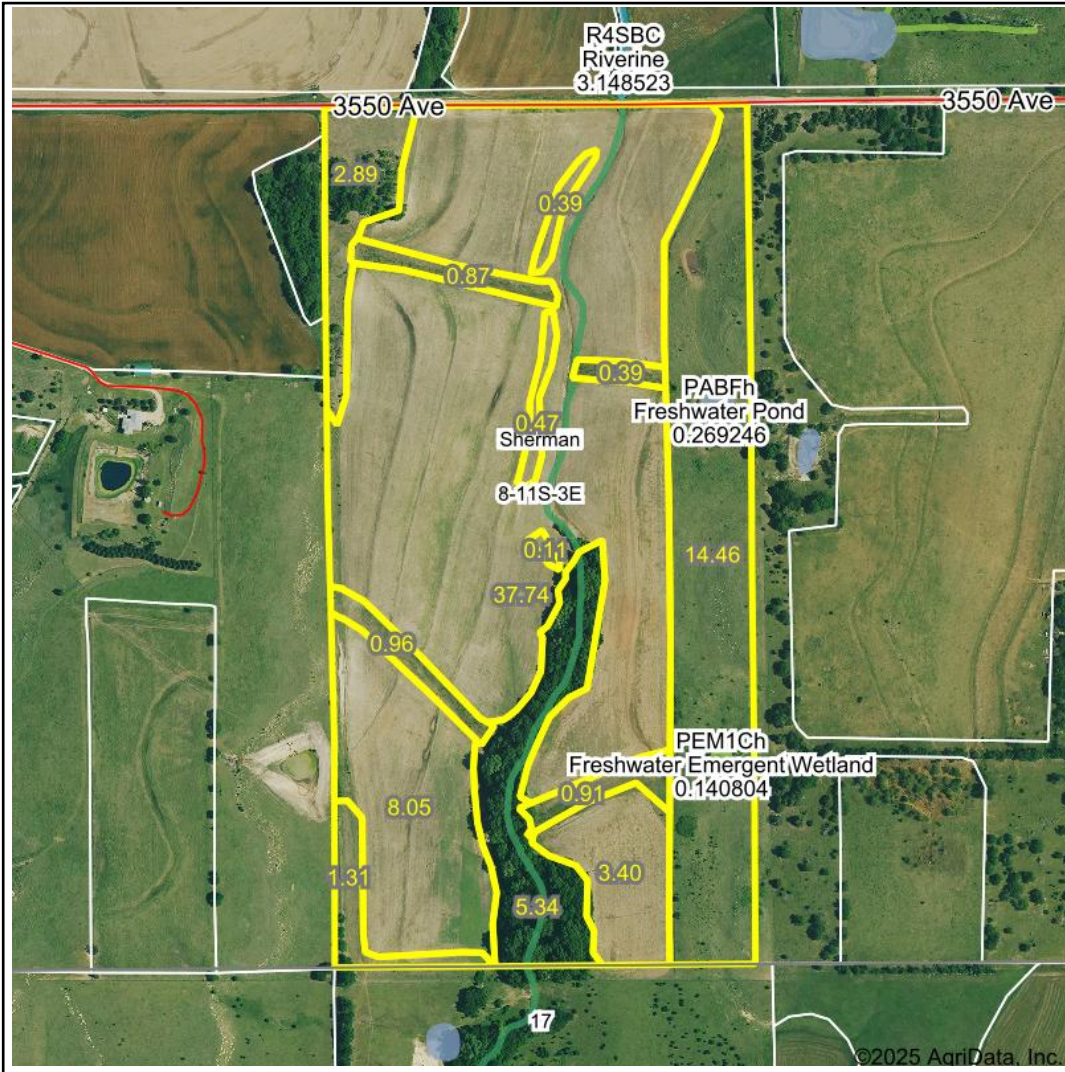


Wetlands Map



State: Kansas
Location: 8-11S-3E
County: Dickinson
Township: Sherman
Date: 1/13/2025



Maps Provided By:

 CUSTOMIZED ONLINE MAPPING
 © AgriData, Inc. 2023 www.AgriDataInc.com



0ft 671ft 1341ft

Classification Code	Type	Acres
PFOA	Freshwater Forested/Shrub Wetland	1.28
PABFh	Freshwater Pond	0.27
PEM1Ch	Freshwater Emergent Wetland	0.14
R4SBC	Riverine	0.00
Total Acres		1.69

Data Source: National Wetlands Inventory website. U.S. DoI, Fish and Wildlife Service, Washington, D.C. <http://www.fws.gov/wetlands/>