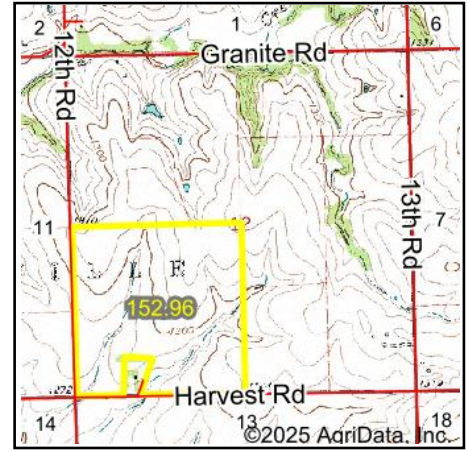
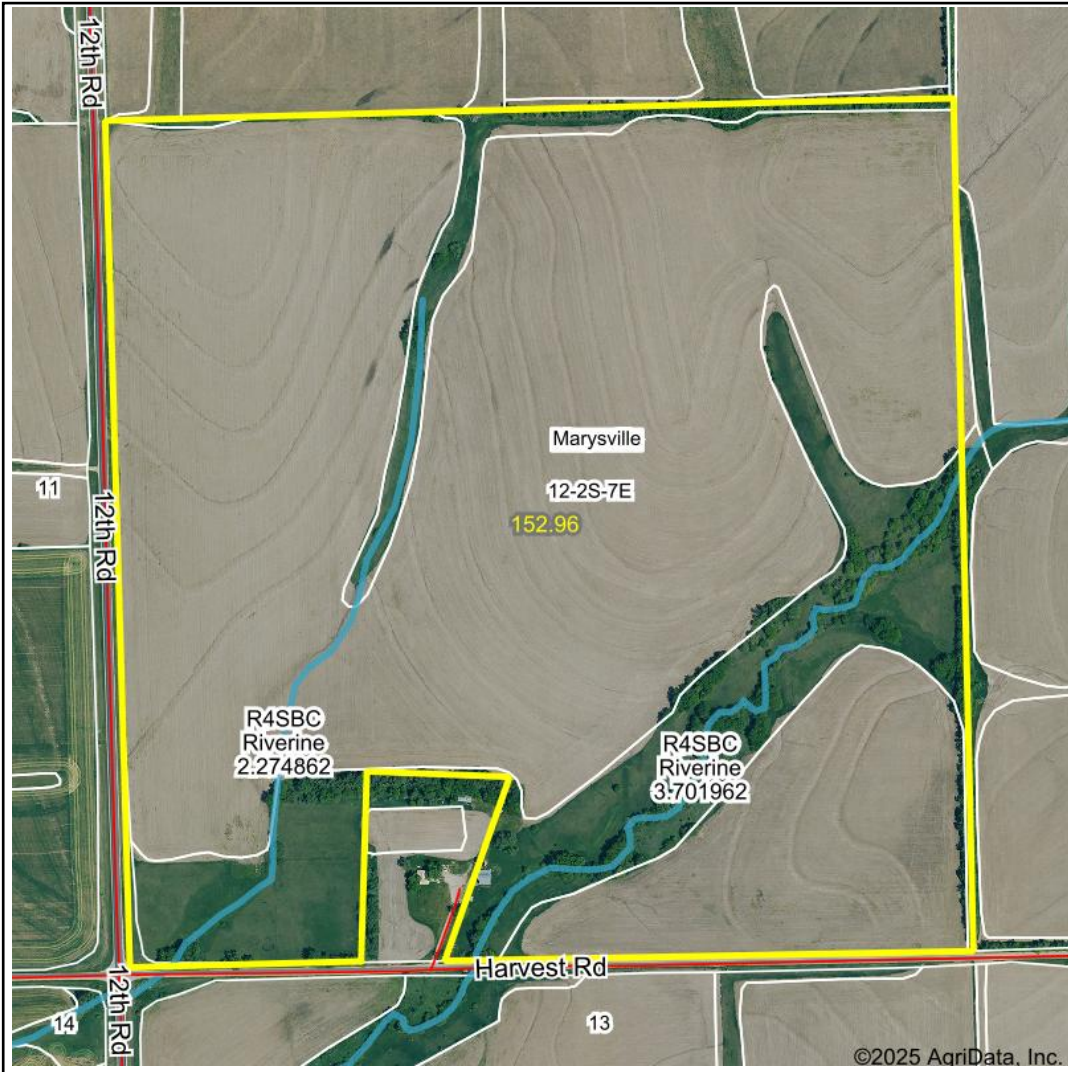


# Wetlands Map



**State:** Kansas  
**Location:** 12-2S-7E  
**County:** Marshall  
**Township:** Marysville  
**Date:** 1/16/2025



Maps Provided By:



© AgriData, Inc. 2023 [www.AgriDataInc.com](http://www.AgriDataInc.com)



0ft 681ft 1362ft

Classification Code	Type	Acres
R4SBC	Riverine	2.18
Total Acres		2.18

Data Source: National Wetlands Inventory website. U.S. DoI, Fish and Wildlife Service, Washington, D.C. <http://www.fws.gov/wetlands/>