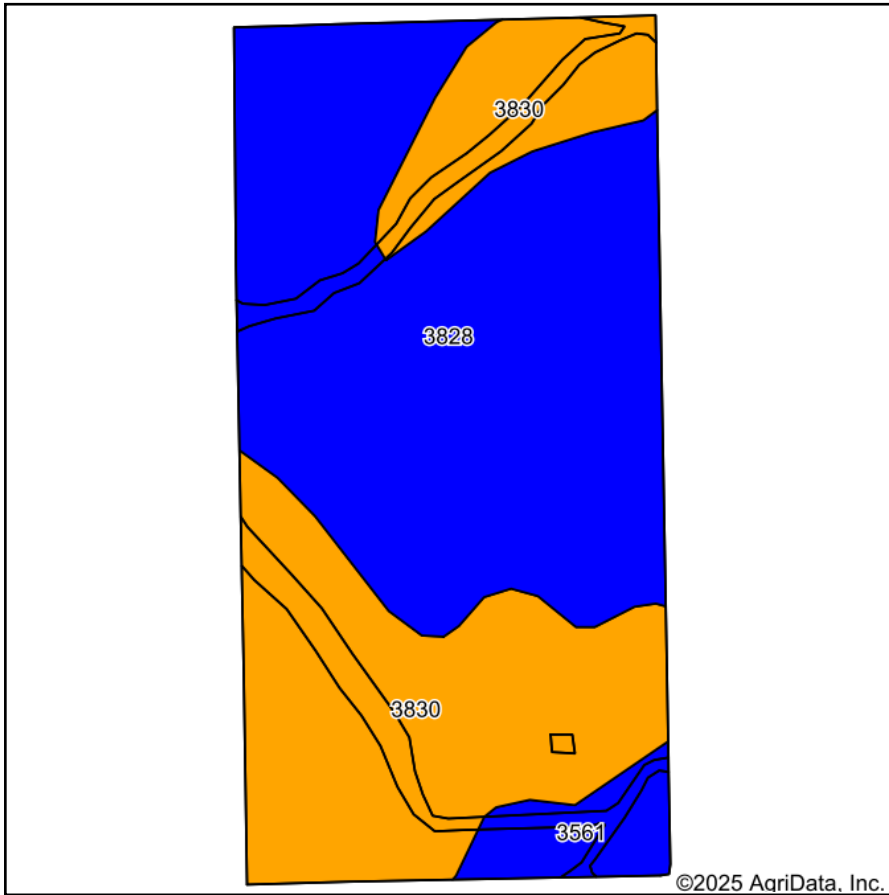
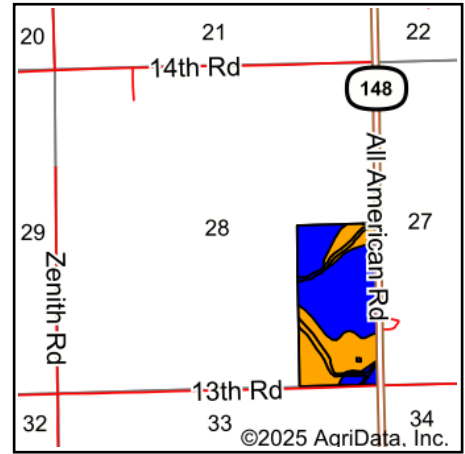


Soils Map



Soils data provided by USDA and NRCS.



State: **Kansas**
 County: **Washington**
 Location: **28-3S-5E**
 Township: **Little Blue**
 Acres: **78.95**
 Date: **3/13/2025**



Maps Provided By:



© AgriData, Inc. 2023

www.AgriDataInc.com



Area Symbol: KS201, Soil Area Version: 24

| Code | Soil Description | Acres | Percent of field | Non-Irr Class Legend | Non-Irr Class *c | Irr Class *c | Range Production (lbs/acre/yr) | *n NCCPI Soybeans |
|-------------------------|--|-------|------------------|----------------------|------------------|--------------|--------------------------------|-------------------|
| 3828 | Crete silty clay loam, 1 to 3 percent slopes | 44.32 | 56.1% | | Ile | Ile | 3645 | 63 |
| 3830 | Crete silty clay loam, 3 to 7 percent slopes | 30.85 | 39.1% | | IIle | IIle | 3655 | 62 |
| 3561 | Hobbs silt loam, occasionally flooded | 3.78 | 4.8% | | IIw | IIw | 5845 | 79 |
| Weighted Average | | | | | 2.39 | 2.39 | 3754.2 | *n 63.4 |

*n: The aggregation method is "Weighted Average using all components"

*c: Using Capabilities Class Dominant Condition Aggregation Method