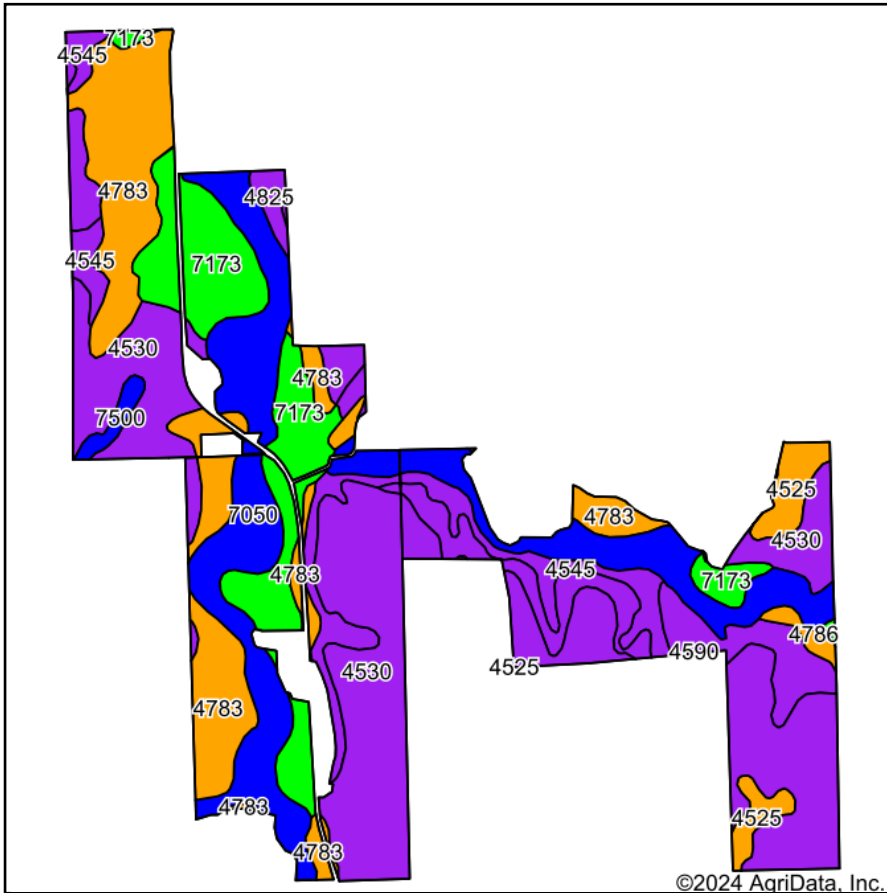
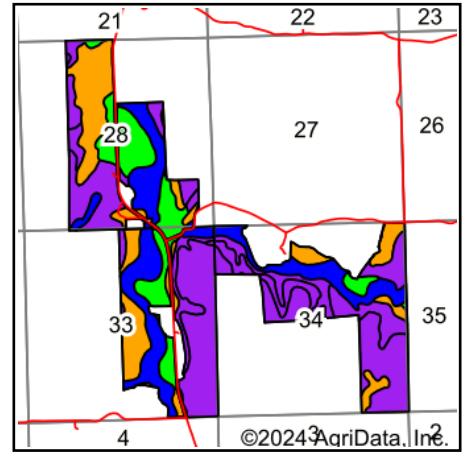


# Soils Map



Soils data provided by USDA and NRCS.



State: **Kansas**  
 County: **Pottawatomie**  
 Location: **34-6S-8E**  
 Township: **Spring Creek**  
 Acres: **829.23**  
 Date: **12/30/2024**



Maps Provided By:



© AgriData, Inc. 2023

www.AgriDataInc.com



Area Symbol: KS149, Soil Area Version: 25

Code	Soil Description	Acres	Percent of field	Non-Irr Class Legend	Non-Irr Class *c	Irr Class *c	Range Production (lbs/acre/yr)	Corn Bu	Soybeans Bu	*n NCCPI Soybeans
4530	Benfield-Florence complex, 5 to 30 percent slopes	273.37	32.9%		Vle	Vle	4145			37
7050	Kennebec silt loam, occasionally flooded	157.46	19.0%		IIw		4361	114	38	82
4783	Tully silty clay loam, 3 to 7 percent slopes	137.96	16.6%		IIIe	IIIe	4985			60
7173	Reading silty clay loam, rarely flooded	107.87	13.0%		Iw	Iw	7915			75
4545	Clime silty clay loam, 20 to 40 percent slopes, stony	58.75	7.1%		VIIe		3070			9
4590	Clime-Sogn complex, 3 to 20 percent slopes	52.66	6.4%		Vle		3310			33
4525	Benfield silty clay loam, 3 to 7 percent slopes	22.13	2.7%		IIIe	IIIe	4831			48
4825	Tuttle channery silty clay loam, 20 to 60 percent slopes, stony	6.00	0.7%		VIIe		3060			7
7500	Pawnee clay loam, 1 to 4 percent slopes	5.55	0.7%		Ile	IIIe	3845			44
4786	Tully silty clay, 3 to 7 percent slopes, eroded	4.97	0.6%		IIIe	IIIe	5230			54
7051	Kennebec silt loam, frequently flooded	2.51	0.3%		Vw		4300			54
<b>Weighted Average</b>					<b>4.04</b>	<b>*</b>	<b>4702.4</b>	<b>21.6</b>	<b>7.2</b>	<b>*n 52.4</b>

\*n: The aggregation method is "Weighted Average using all components"

\*c: Using Capabilities Class Dominant Condition Aggregation Method

\*- Irr Class weighted average cannot be calculated on the current soils data due to missing data.

Soils data provided by USDA and NRCS.