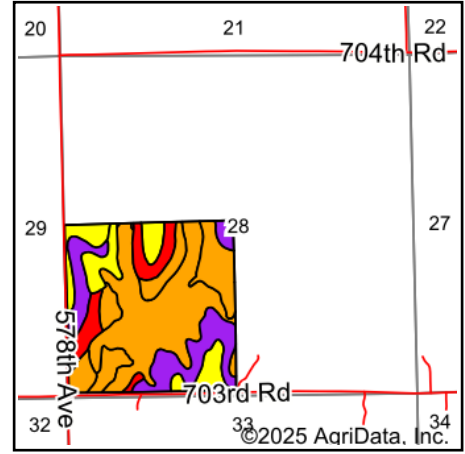
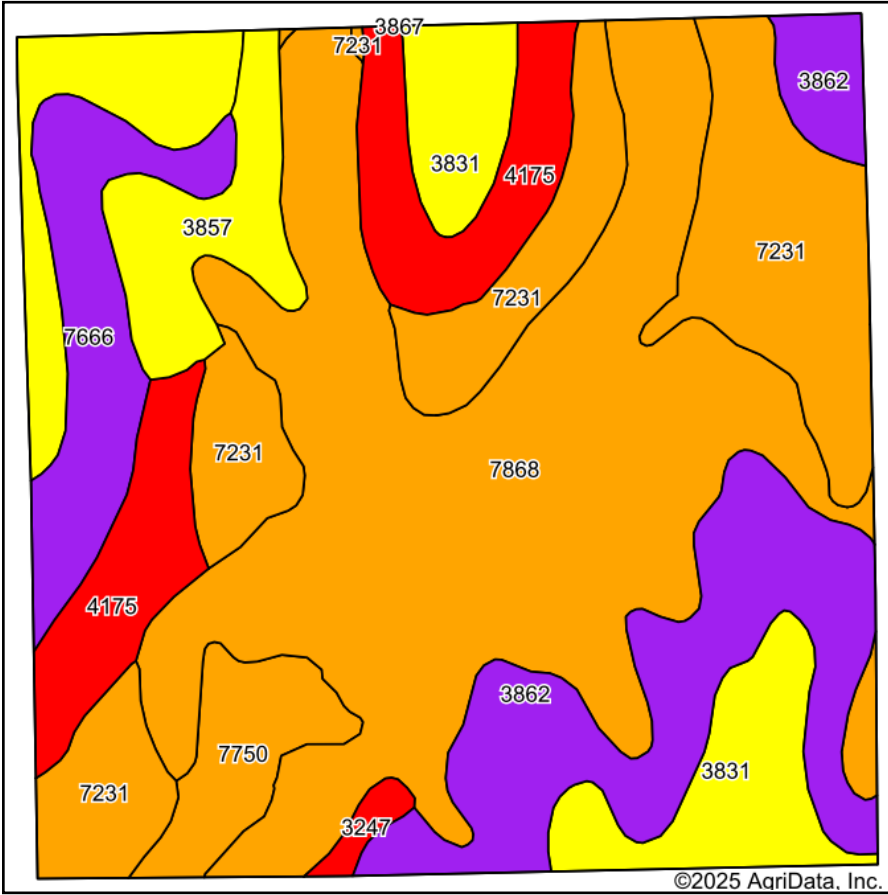


Soils Map



State: **Nebraska**
 County: **Jefferson**
 Location: **28-1N-4E**
 Township: **Newton**
 Acres: **157.13**
 Date: **3/3/2025**



Maps Provided By:



© AgriData, Inc. 2023

www.AgriDataInc.com



Soils data provided by USDA and NRCS.

Area Symbol: NE095, Soil Area Version: 22

Code	Soil Description	Acres	Percent of field	SRPG Legend	Non-Irr Class *c	Irr Class *c	Range Production (lbs/acre/yr)	SRPG	Alfalfa hay Tons	Alfalfa hay Irrigated Tons	Bromegrass alfalfa AUM	Bromegrass alfalfa Irrigated AUM	Corn Bu	Corn Irrigated Bu	Grain sorghum Bu
7868	Nodaway silt loam, channeled, occasionally flooded	56.42	36.0%		VIw		4038	74	1	1	1	2	13	18	13
7231	Judson silt loam, 2 to 6 percent slopes	26.39	16.8%		IIe	IIle	3980	80	5	7	1	1	104	149	86
3862	Geary and Jansen soils, 7 to 11 percent slopes, severely eroded	20.06	12.8%		IVe	IVe	3420	56							
3831	Crete silty clay loam, 3 to 7 percent slopes, eroded	18.22	11.6%		IIIe	IIIe	3460	61							
4175	Lancaster soils, 7 to 11 percent slopes, severely eroded	13.69	8.7%		IVe		3900	34	2	3			32	85	29

Soils data provided by USDA and NRCS.



Code	Soil Description	Acres	Percent of field	SRPG Legend	Non-Irr Class *c	Irr Class *c	Range Production (lbs/acre/yr)	SRPG	Alfalfa hay Tons	Alfalfa hay Irrigated Tons	Bromegrass alfalfa AUM	Bromegrass alfalfa Irrigated AUM	Corn Bu	Corn Irrigated Bu	Grain sorghum Bu	
7666	Mayberry silty clay loam, 3 to 6 percent slopes, eroded	9.43	6.0%		IVe	IVe	3230	56								
3857	Geary and Jansen soils, 7 to 11 percent slopes	6.82	4.3%		IVe	IVe	3420	63								
7750	Nodaway silt loam, occasionally flooded	5.25	3.3%		IIw	IIw	4160	74								
3247	Meadin loam, 6 to 30 percent slopes	0.85	0.5%		VIc		2430	22								
Weighted Average					4.21	*-	3790.4	65.9	1.4	1.8	0.5	0.9	24.9	38.9	21.6	

*n: The aggregation method is "Weighted Average using all components"

*c: Using Capabilities Class Dominant Condition Aggregation Method

*- Irr Class weighted average cannot be calculated on the current soils data due to missing data.