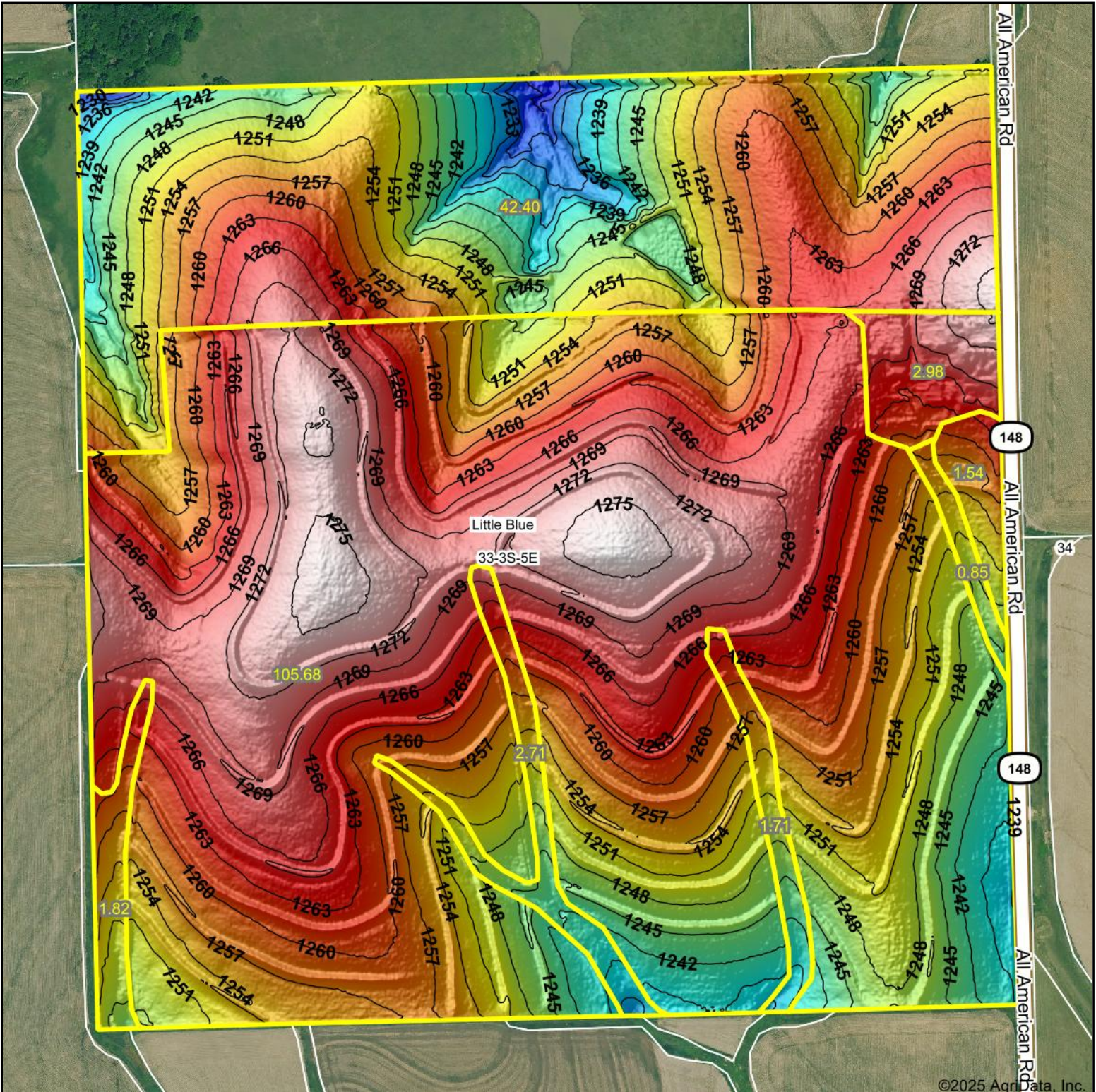
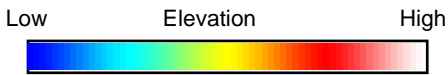


Topography Hillshade



©2025 AgriData, Inc.



Source: USGS 1 meter dem
 Interval(ft): 3
 Min: 1,225.7
 Max: 1,276.8
 Range: 51.1
 Average: 1,257.8
 Standard Deviation: 10.14 ft



33-3S-5E
Washington County
Kansas

Boundary Center: 39° 44' 51.17, -96° 52' 4.28



Maps Provided By:



© AgriData, Inc. 2023 www.AgriDataInc.com

Field borders provided by Farm Service Agency as of 5/21/2008.