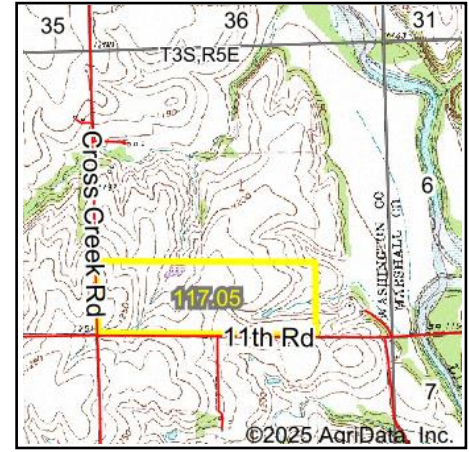
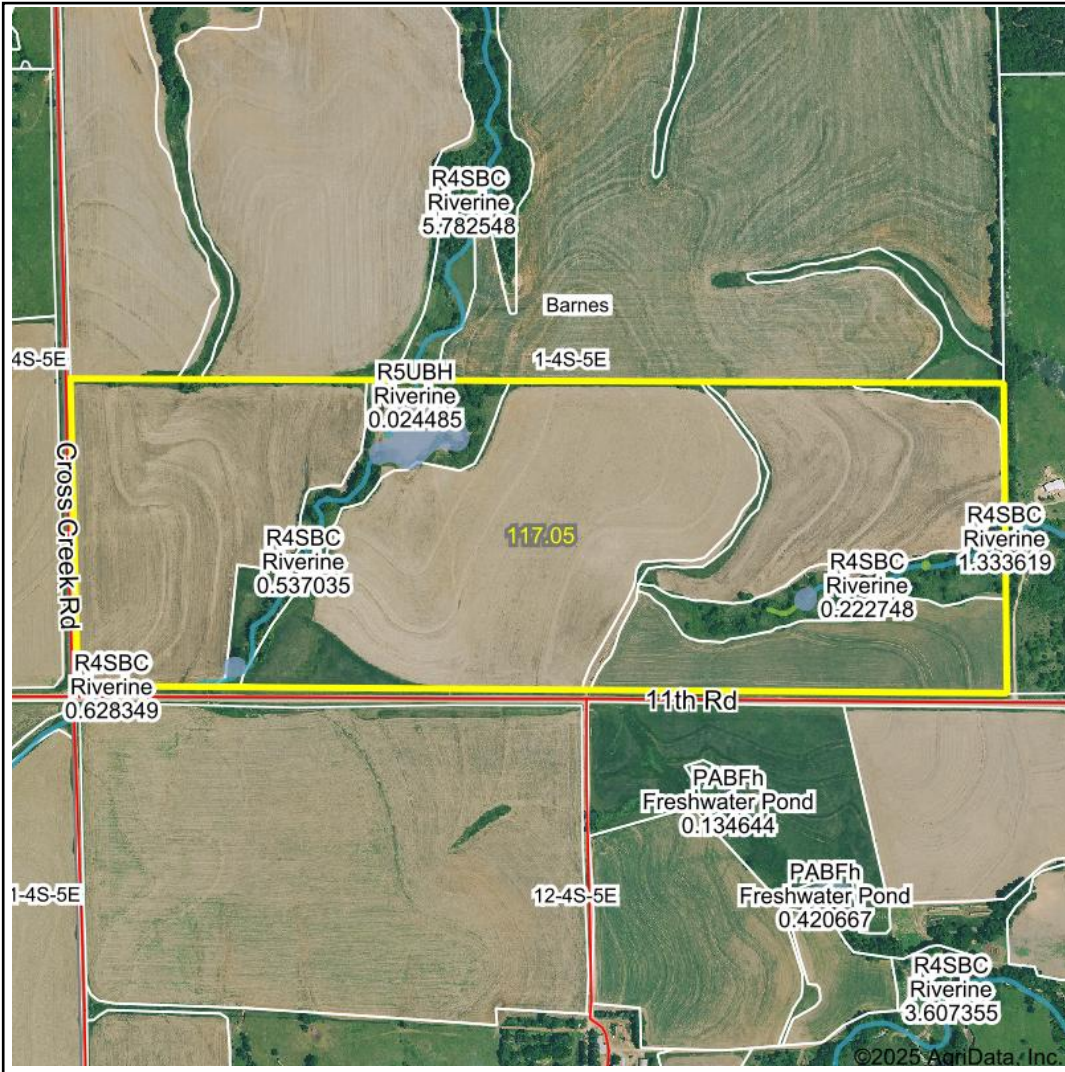


Wetlands Map



State: Kansas
Location: 1-4S-5E
County: Washington
Township: Barnes
Date: 2/12/2025



Maps Provided By:



© AgriData, Inc. 2023 www.AgriDataInc.com



0ft 928ft 1856ft

Classification Code	Type	Acres
PABFh	Freshwater Pond	2.13
R4SBC	Riverine	1.10
PEM1Ch	Freshwater Emergent Wetland	0.09
R5UBH	Riverine	0.05
Total Acres		3.37

Data Source: National Wetlands Inventory website. U.S. DoI, Fish and Wildlife Service, Washington, D.C. <http://www.fws.gov/wetlands/>