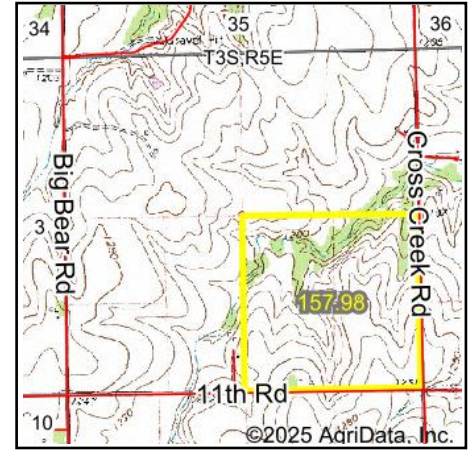
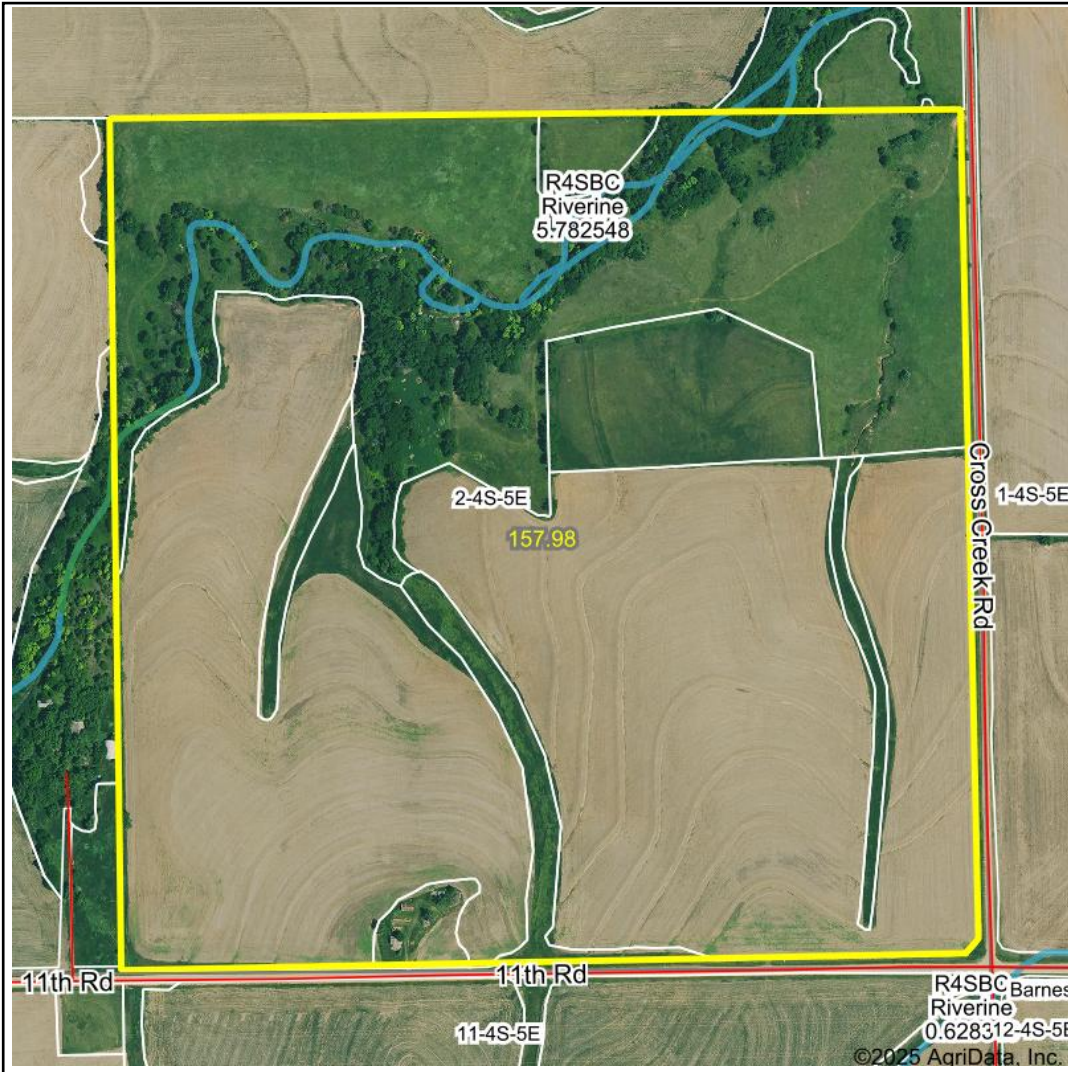


Wetlands Map



State: Kansas
Location: 2-4S-5E
County: Washington
Township: Barnes
Date: 2/12/2025



Maps Provided By:



© AgriData, Inc. 2023 www.AgriDataInc.com



0ft 679ft 1358ft

| Classification Code | Type | Acres |
|---------------------|-----------------------------------|-------|
| R4SBC | Riverine | 1.82 |
| PFOA | Freshwater Forested/Shrub Wetland | 0.13 |
| Total Acres | | 1.95 |

Data Source: National Wetlands Inventory website. U.S. Dol, Fish and Wildlife Service, Washington, D.C. <http://www.fws.gov/wetlands/>