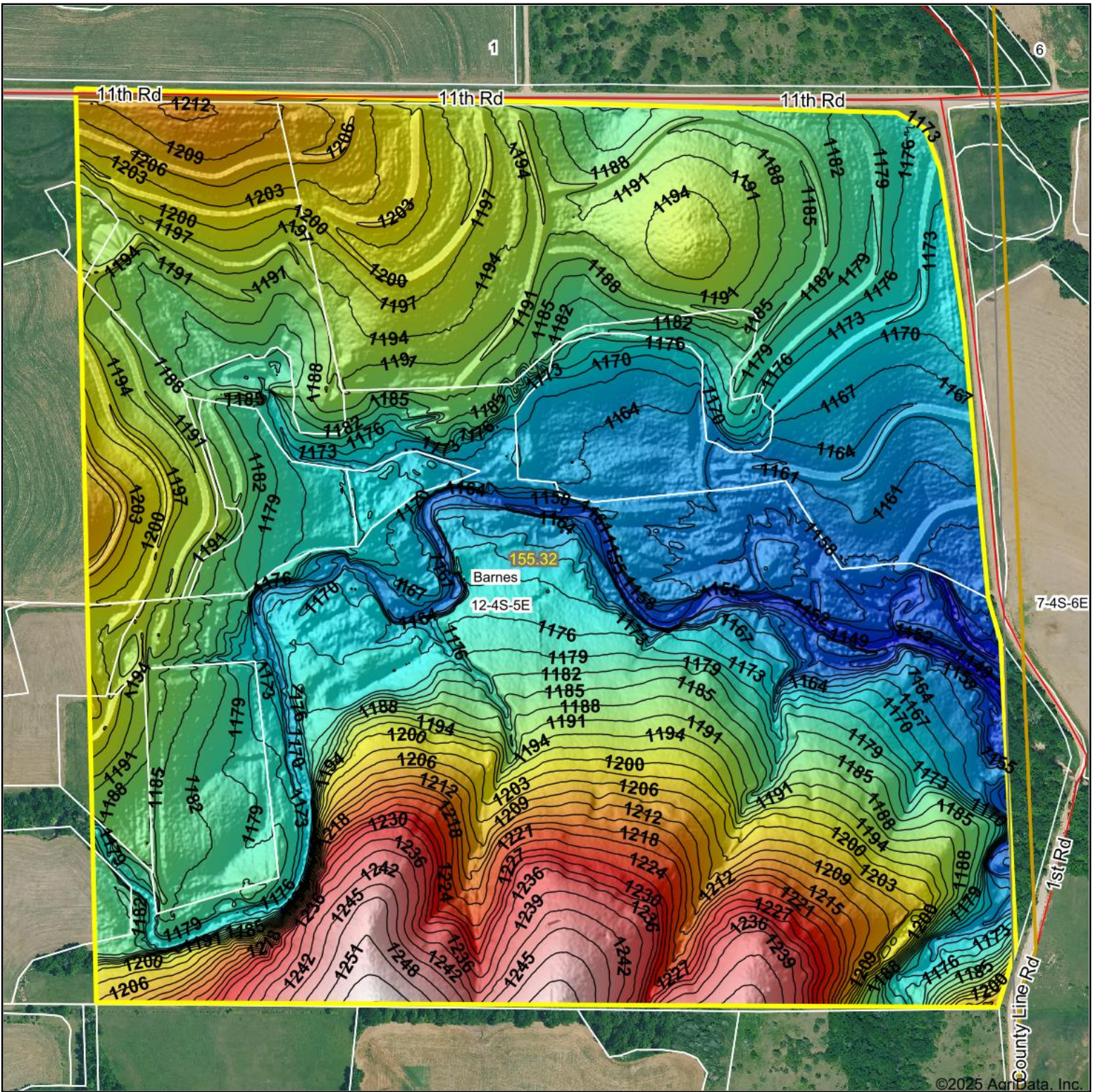


# Topography Hillshade



Low	Elevation	High	Source: USGS 1 meter dem	0ft	449ft	898ft
			Interval(ft): 3			
			Min: 1,143.8	 2/12/2025 <b>12-4S-5E</b> <b>Washington County</b> <b>Kansas</b> Boundary Center: 39° 43' 20.28, -96° 48' 40.85		
			Max: 1,257.2			
			Range: 113.4			
			Average: 1,188.9			
			Standard Deviation: 22.44 ft			

Maps Provided By:  
  
 CUSTOMIZED ONLINE MAPPING  
 © AgriData, Inc. 2023 www.AgriDataInc.com  
 Field borders provided by Farm Service Agency as of 5/21/2008.