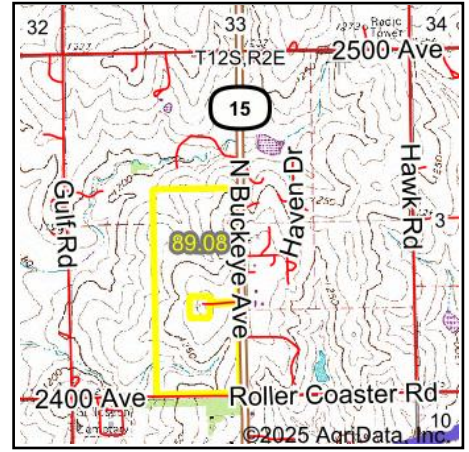
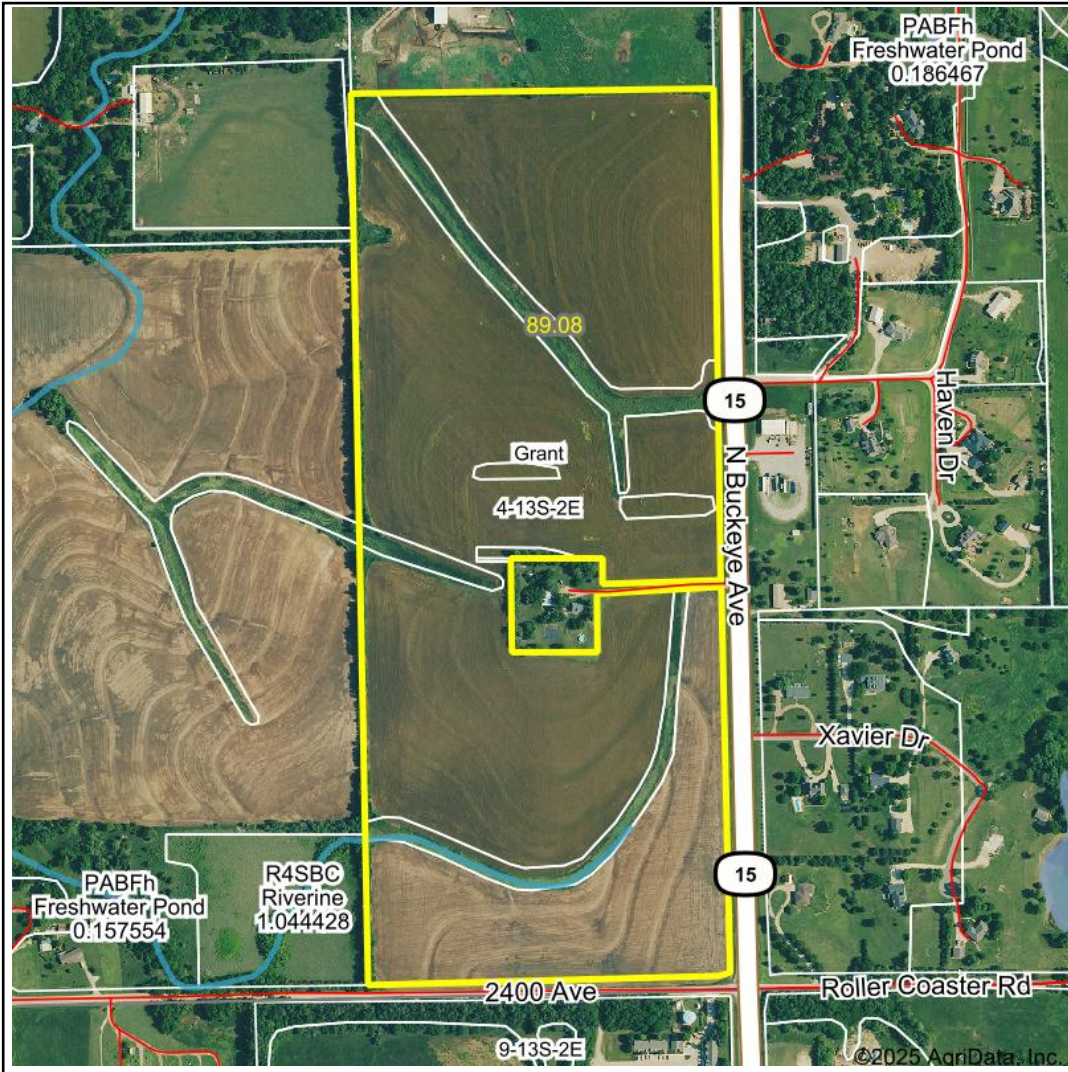


Wetlands Map

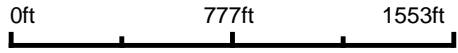


State: Kansas
Location: 4-13S-2E
County: Dickinson
Township: Grant
Date: 1/20/2025



Maps Provided By:

 CUSTOMIZED ONLINE MAPPING
 © AgriData, Inc. 2023 www.AgriDataInc.com



Classification Code	Type	Acres
R4SBC	Riverine	0.47
Total Acres		0.47

Data Source: National Wetlands Inventory website. U.S. DoI, Fish and Wildlife Service, Washington, D.C. <http://www.fws.gov/wetlands/>