

# Welcome Home!



318 MAPLE STREET, CENTRALIA, KS



## PROPERTY FEATURES



Three



1 Car  
Detached  
Garage



One



0.25 Acre  
Corner Lot



Master with  
Walk-in  
Closet



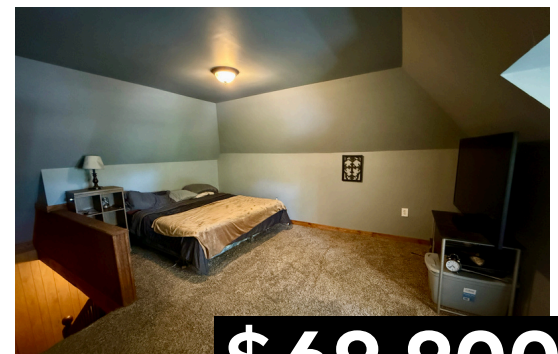
Main Level  
Living



Wraparound  
Porch



Hardwood  
Floors



**\$69,900**

## Jessica Leis, Broker



785.562.7817



jessica@midwestlandandhome.com



www.MidwestLandandHome.com

