

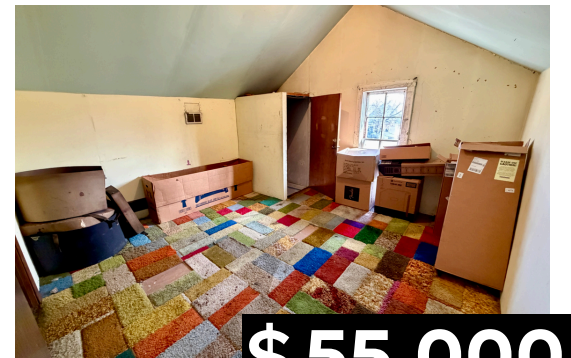
Opportunity Awaits!



404 NORTH 4TH ST, MARYSVILLE, KS



Unlock the potential of this 1,610 sq. ft. warehouse/storage facility built in 1925, ideally situated on a 0.05-acre lot in Marshall County within USD 364 School District. Featuring a durable metal roof, wood and metal exterior, and slab foundation, this versatile property offers exceptional functionality for business, workshop, or conversion opportunities. The main level includes an open garage/storage area with tall ceilings, three additional rooms, and a full bathroom, while the second story provides two finished rooms (one with closets) plus one unfinished space, perfect for offices, studio space, or added storage. With its flexible layout, open-concept design, and prime accessibility, this unique warehouse property offers endless possibilities for entrepreneurs, investors, storage needs or shouse conversion.



\$ 55,000

Jessica Leis, Broker



785.562.7817



jessica@midwestlandandhome.com



www.MidwestLandandHome.com

