

Welcome Home!



601 N. 13TH ST, MARYSVILLE, KS



PROPERTY FEATURES



3 & 1 Non -
Conforming



Attached
Garage



Two



Corner Lot,
Large Yard



Kitchen &
Basement
Remodel



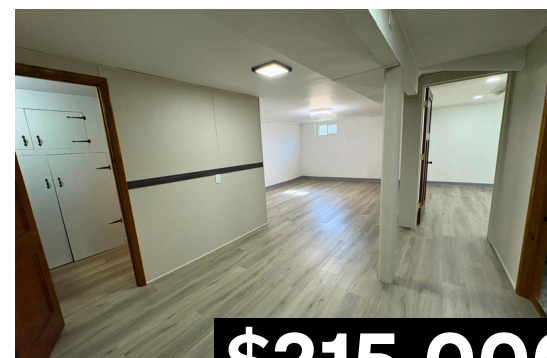
Open Attic
Space



Fresh Paint



New Front
Steps



\$215,000

Tommy Brinegar, Agent



785.562.7646



tommy@midwestlandandhome.com



www.MidwestLandandHome.com

