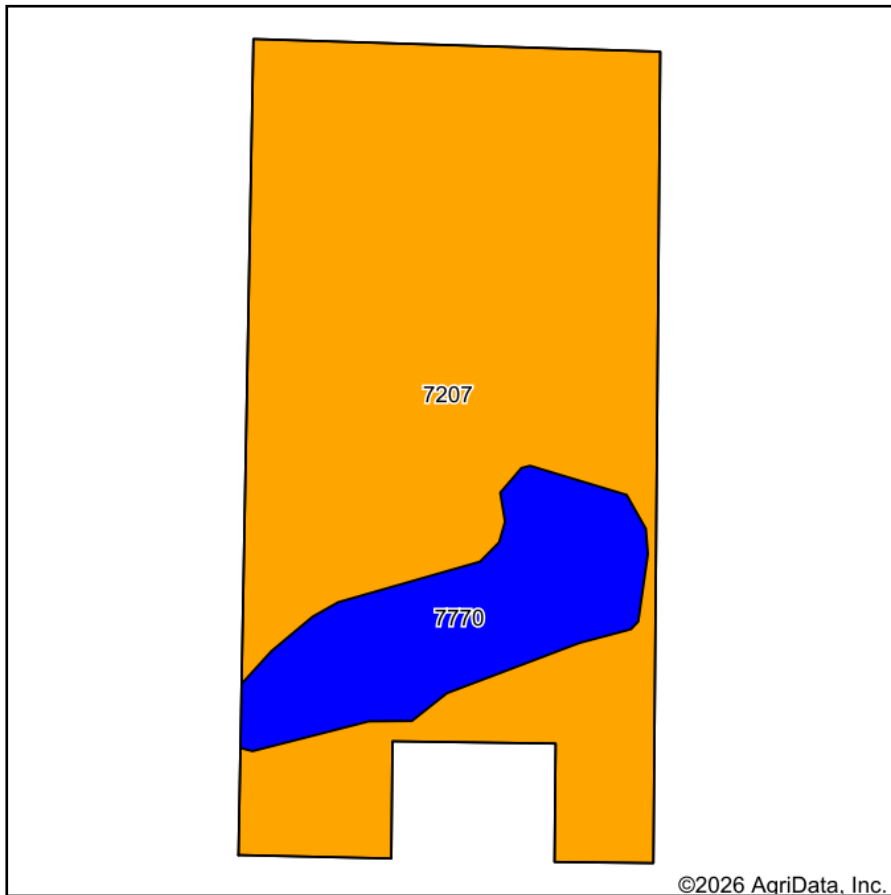
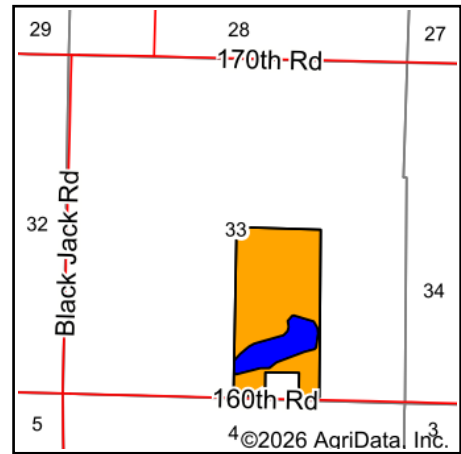


# Soils Map



Soils data provided by USDA and NRCS.



State: **Kansas**  
 County: **Doniphan**  
 Location: **33-3S-19E**  
 Township: **Wolf River**  
 Acres: **75.59**  
 Date: **2/12/2026**



Maps Provided By:



Area Symbol: KS043, Soil Area Version: 26

| Code                    | Soil Description                                 | Acres | Percent of field | Non-Irr Class Legend | Non-Irr Class *c | Irr Class *c | Range Production (lbs/acre/yr) | Alfalfa hay Tons | Caucasian bluestem Tons | Common bermudagrass Tons | Corn Bu  | Corn Irrigated Bu | Grain sorghum Bu | Orchardgrass red clover Tons | Sm bro AU  |
|-------------------------|--|-------|------------------|----------------------|------------------|--------------|--------------------------------|------------------|-------------------------|--------------------------|----------|-------------------|------------------|------------------------------|------------|
| 7207                    | Aksarben silty clay loam, 6 to 11 percent slopes | 62.56 | 82.8%            |                      | IIIe             | IVe          | 4241                           | 4                | 7                       |                          | 6        |                   |                  |                              | 7          |
| 7770                    | Smithland silt loam, occasionally flooded        | 13.03 | 17.2%            |                      | IIw              |              | 4120                           |                  |                         |                          | 102      | 128               | 77               |                              |            |
| <b>Weighted Average</b> |  |       |                  |                      | <b>2.83</b>      | <b>*-</b>    | <b>4220.1</b>                  | <b>3.3</b>       | <b>5.8</b>              |                          | <b>5</b> | <b>17.6</b>       | <b>22.1</b>      | <b>13.3</b>                  | <b>5.8</b> |

\*n: The aggregation method is "Weighted Average using all components"

\*c: Using Capabilities Class Dominant Condition Aggregation Method

\*-: Irr Class weighted average cannot be calculated on the current soils data due to missing data.