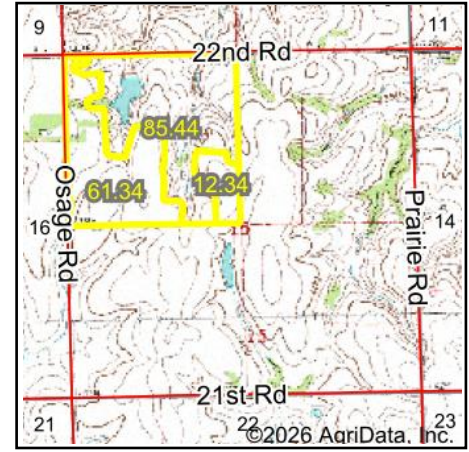
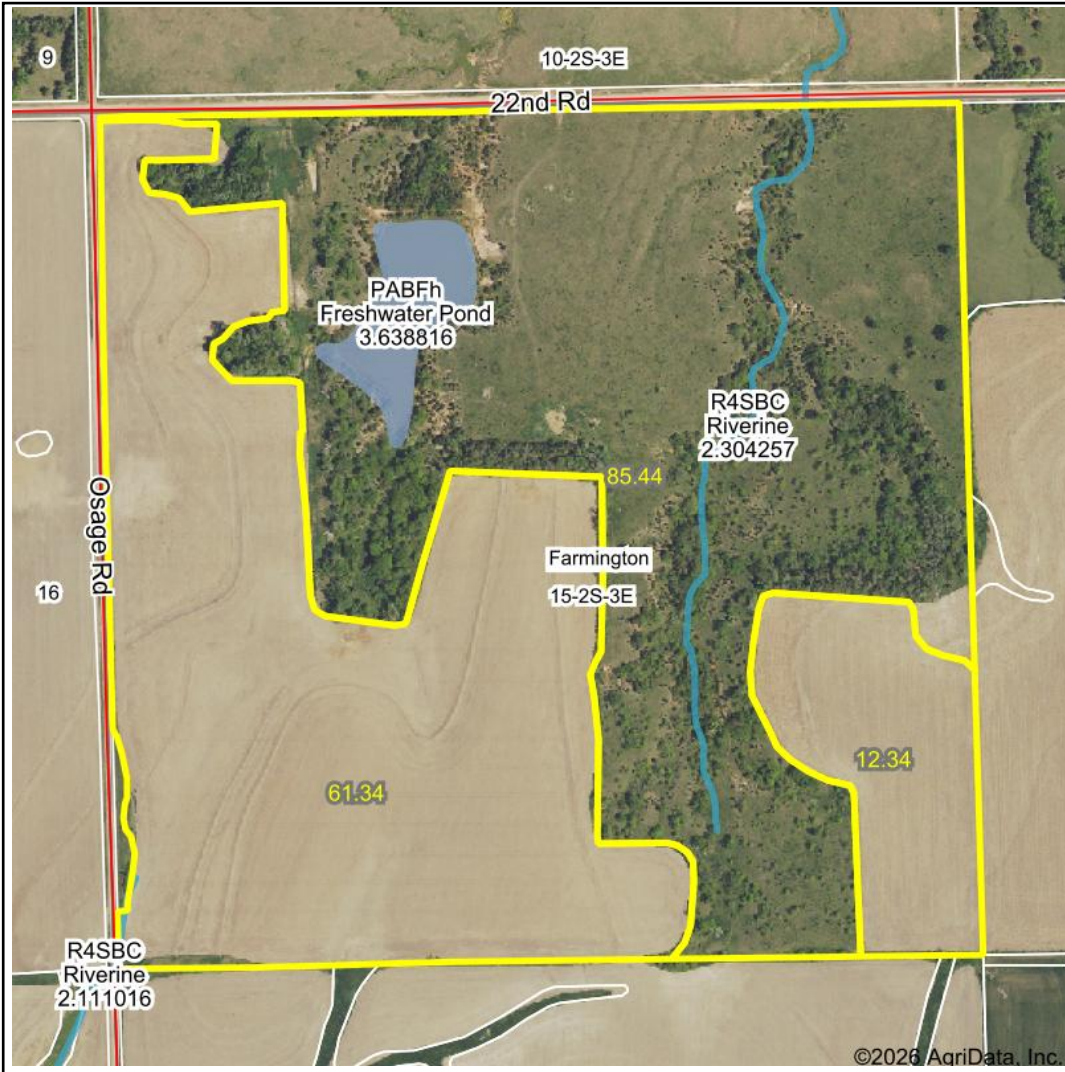


Wetlands Map



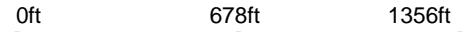
State: Kansas
Location: 15-2S-3E
County: Washington
Township: Farmington
Date: 2/2/2026



Maps Provided By:



© AgriData, Inc. 2025 www.AgriDataInc.com



| Classification Code | Type | Acres |
|---------------------|-----------------|-------|
| PABFh | Freshwater Pond | 3.64 |
| R4SBC | Riverine | 1.24 |
| Total Acres | | 4.88 |

Data Source: National Wetlands Inventory website. U.S. Dol, Fish and Wildlife Service, Washington, D.C. <http://www.fws.gov/wetlands/>