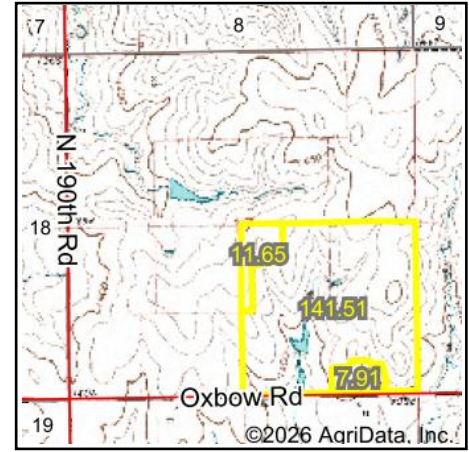
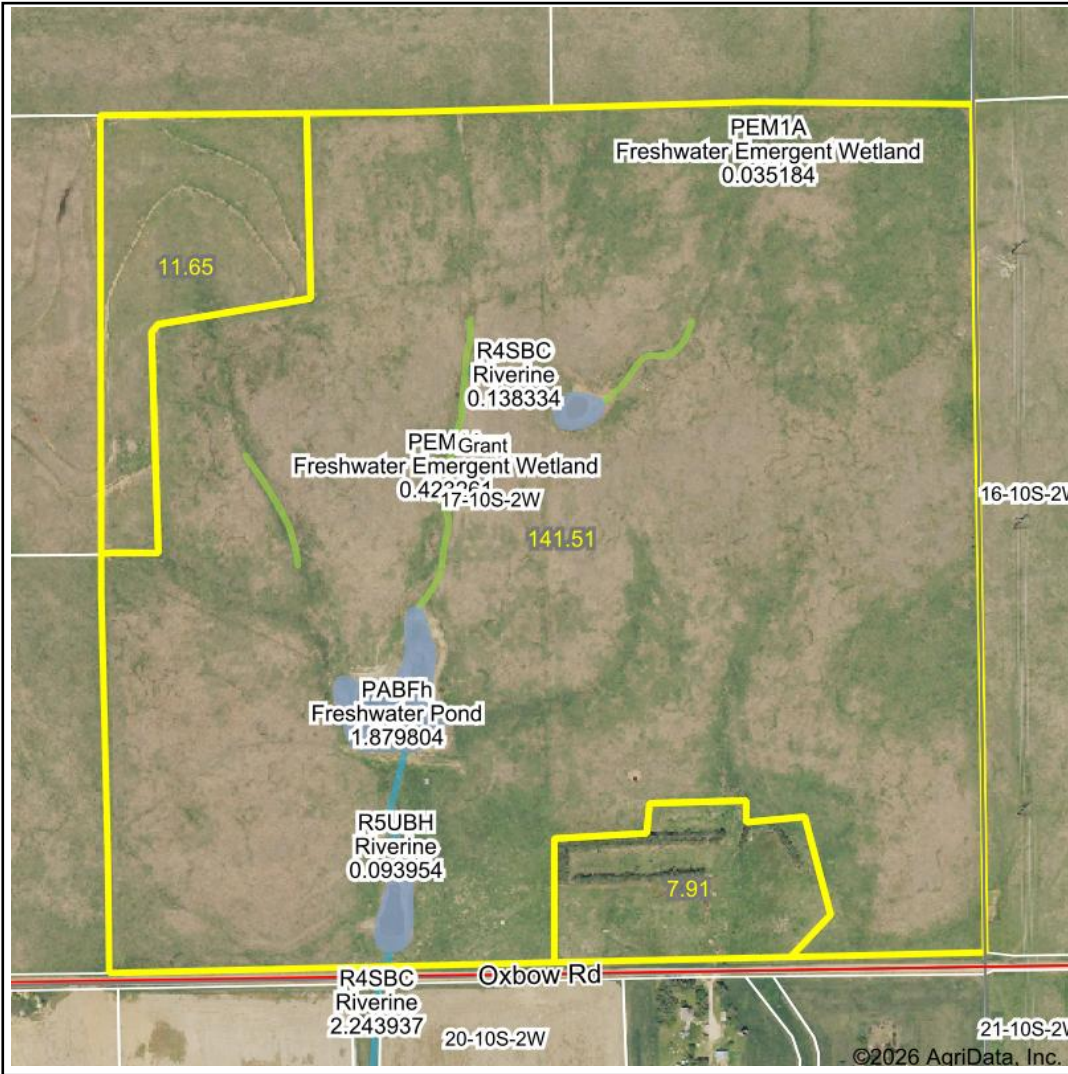


Wetlands Map



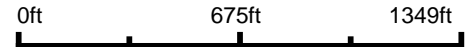
State: Kansas
Location: 17-10S-2W
County: Ottawa
Township: Grant
Date: 2/9/2026



Maps Provided By:



© AgriData, Inc. 2025 www.AgriDataInc.com



Classification Code	Type	Acres
PABFh	Freshwater Pond	2.75
PEM1A	Freshwater Emergent Wetland	0.82
R4SBC	Riverine	0.26
R5UBH	Riverine	0.09
Total Acres		3.92

Data Source: National Wetlands Inventory website. U.S. DoI, Fish and Wildlife Service, Washington, D.C. <http://www.fws.gov/wetlands/>