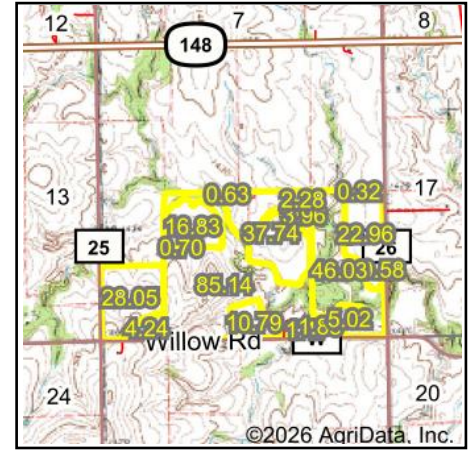
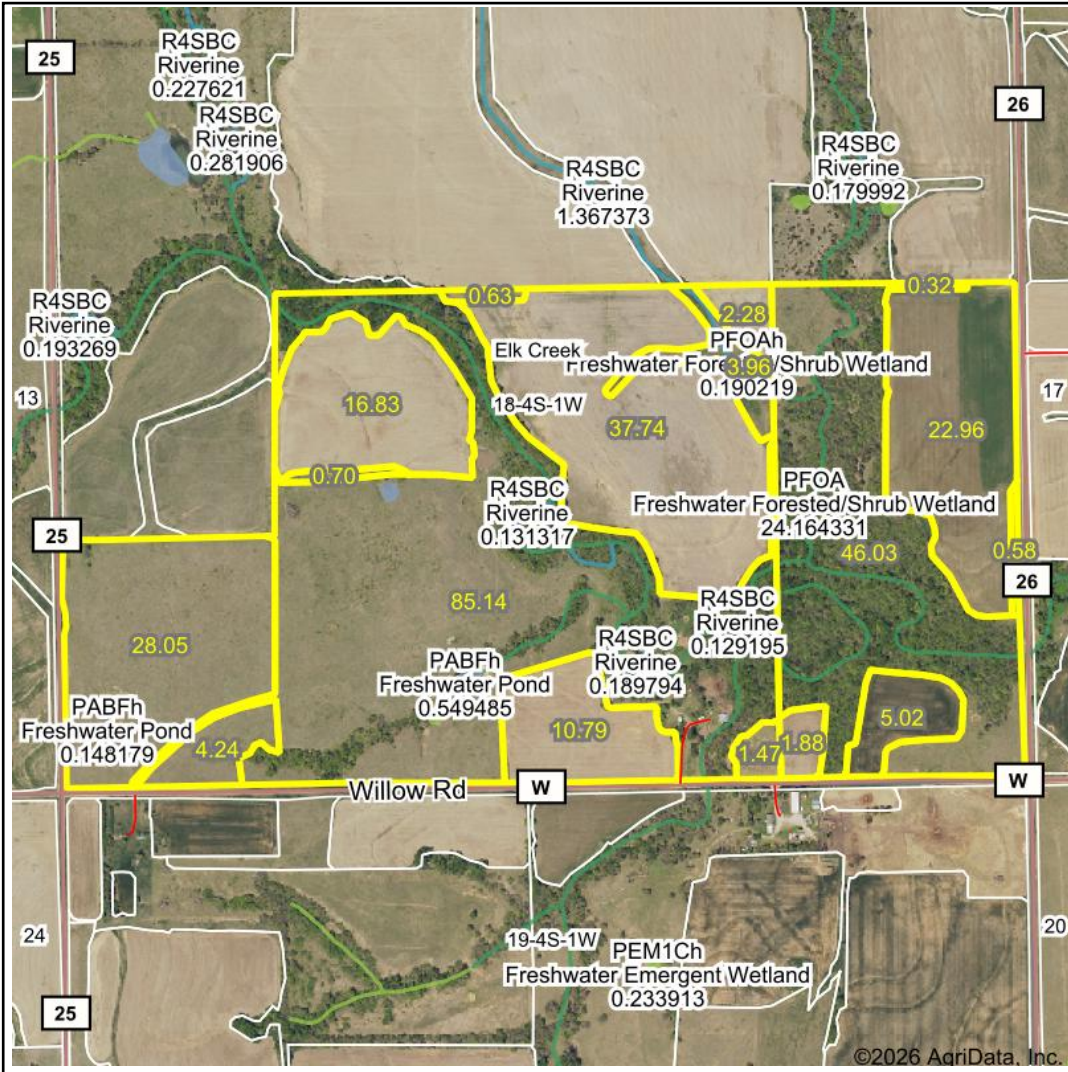


Wetlands Map



State: Kansas
Location: 18-4S-1W
County: Republic
Township: Elk Creek
Date: 1/25/2026



Maps Provided By:

 © AgriData, Inc. 2025 www.AgriDataInc.com



0ft 1165ft 2329ft

Classification Code	Type	Acres
PFOA	Freshwater Forested/Shrub Wetland	5.59
R4SBC	Riverine	0.87
PABFh	Freshwater Pond	0.86
PEM1Ch	Freshwater Emergent Wetland	0.27
PFOAh	Freshwater Forested/Shrub Wetland	0.19
Total Acres		7.78

Data Source: National Wetlands Inventory website. U.S. DoI, Fish and Wildlife Service, Washington, D.C. <http://www.fws.gov/wetlands/>