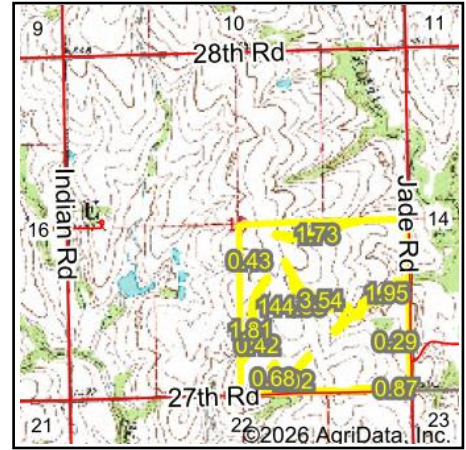
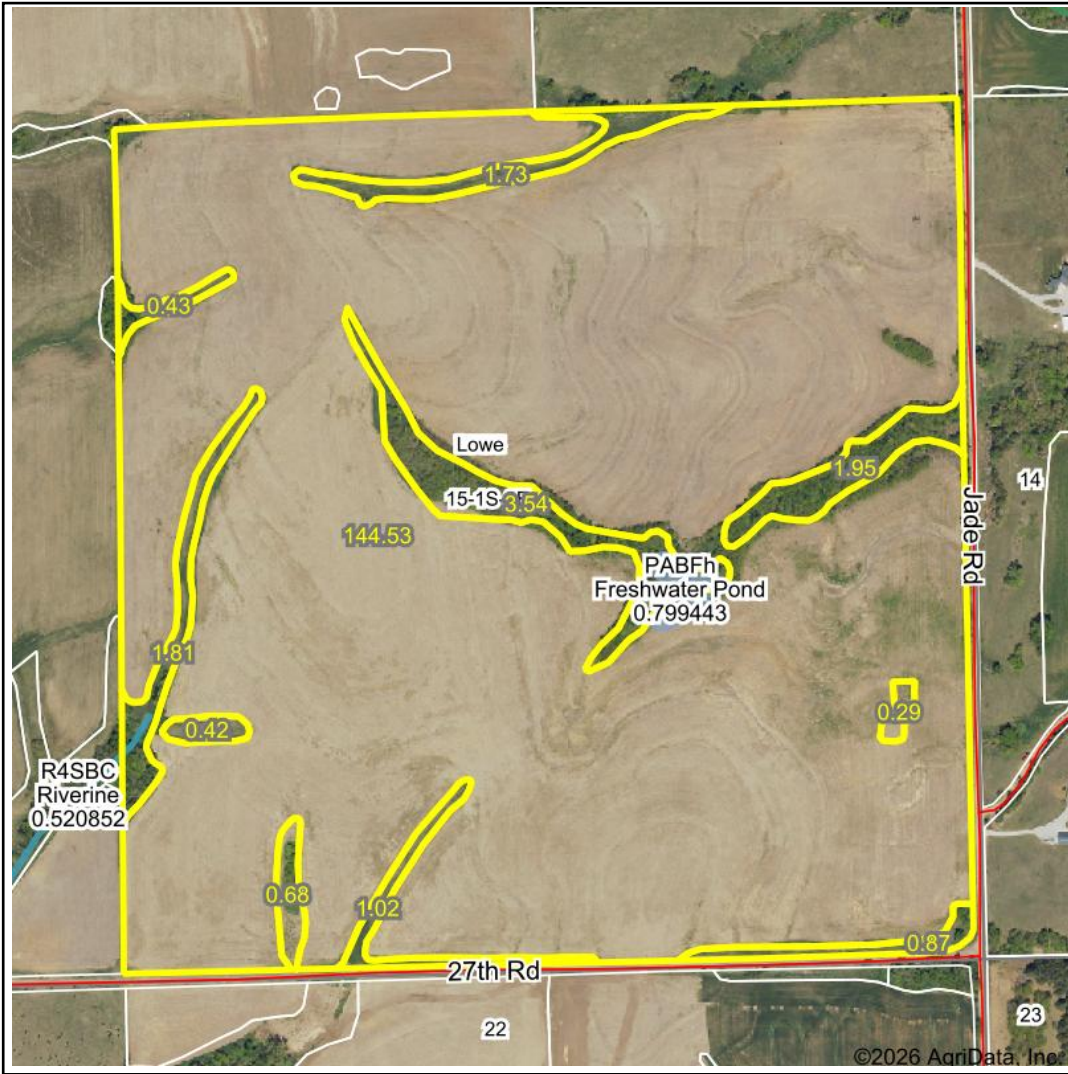


Wetlands Map

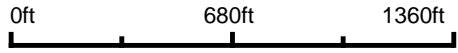


State: Kansas
Location: 15-1S-2E
County: Washington
Township: Lowe
Date: 3/10/2026



Maps Provided By:

 CUSTOMIZED ONLINE MAPPING
© AgriData, Inc. 2025 www.AgriDataInc.com



Classification Code	Type	Acres
PABFh	Freshwater Pond	0.80
R4SBC	Riverine	0.07
Total Acres		0.87

Data Source: National Wetlands Inventory website. U.S. DoI, Fish and Wildlife Service, Washington, D.C. <http://www.fws.gov/wetlands/>