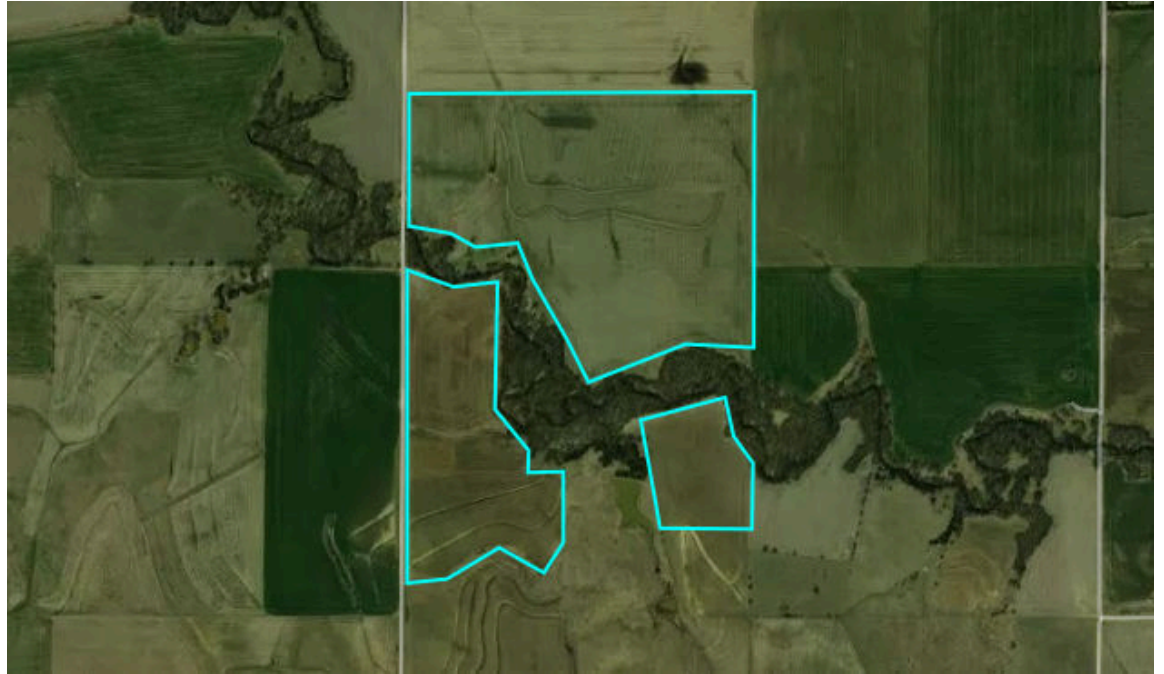




Jeff
Dankenbring
(Broker/Owner)
Land Specialist



155.8 Acres



Midwest Land & Home

Property Overview



155.8 Acres, 3 Boundaries

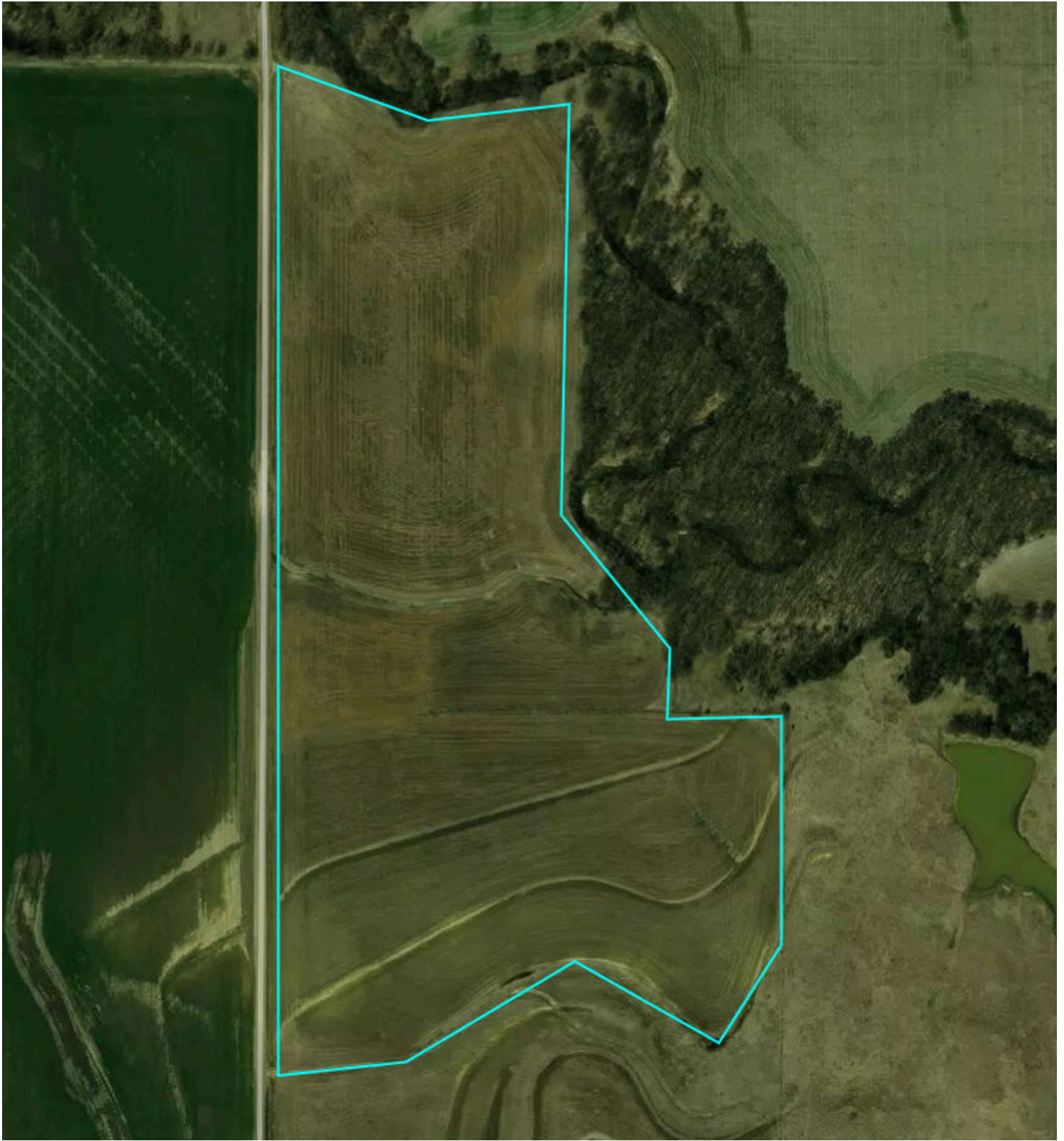


Property Overview



Jewell County, KS

43.0 Acres, Boundary 1 of 3



Jewell County, KS
Township: 005S

Locations
09 T5S R7W

Acres
42.96

Property Overview



Jewell County, KS

15.0 Acres, Boundary 2 of 3



Jewell County, KS
Township: 005S

Locations
09 T5S R7W

Acres
14.97

Property Overview



Jewell County, KS

97.9 Acres, Boundary 3 of 3



Jewell County, KS
Township: 005S

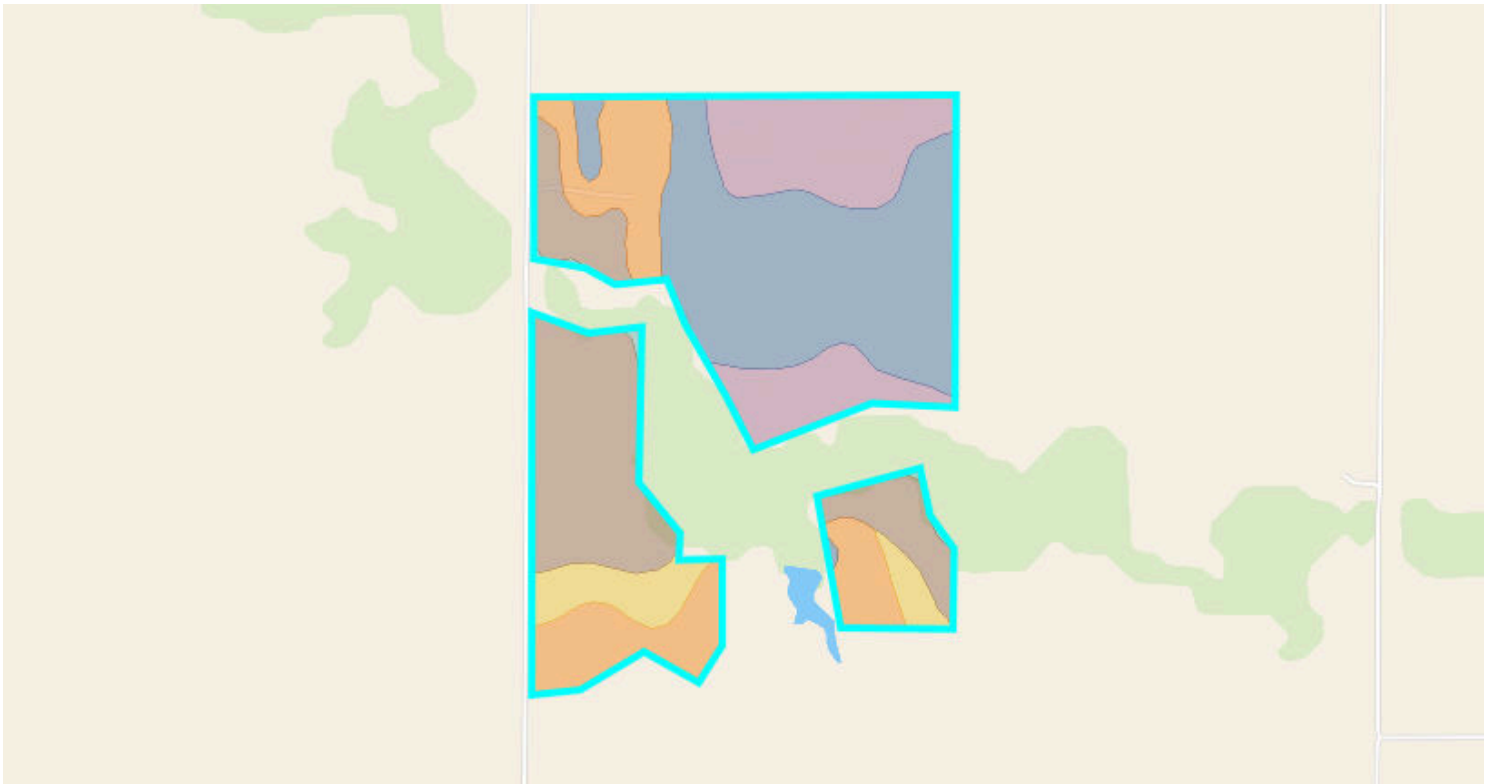
Locations
09 T5S R7W

Acres
97.90

Soils



155.8 Acres, 3 Boundaries



68/100 NCCPI

	Code	Soil Description	% of Selection	Acres	Non-IRR Class	IRR Class	NCCPI
●	2613	Harney silt loam, 1 to 3 percent slopes	31.9%	49.7	2e	2e	68.7
●	2375	Roxbury silt loam, rarely flooded	24.4%	37.9	2e	1	79
●	3800	Crete silt loam, 0 to 1 percent slopes, loess plains and breaks	12.3%	19.2	2s	2s	65
●	2596	Corinth-Harney silty clay loams, 3 to 7 percent slopes, eroded	10.5%	16.4	4e	4e	44.7
●	2614	Harney silt loam, 3 to 7 percent slopes	7.5%	11.7	3e	3e	68.1

Soils



155.8 Acres, 3 Boundaries

	Code	Soil Description	% of Selection	Acres	Non-IRR Class	IRR Class	NCCPI
●	3755	Hord silt loam, rarely flooded	6.6%	10.3	2c	1	78.3
●	2518	Armo loam, 1 to 3 percent slopes	6.1%	9.5	2e	2e	58.3
●	2234	Roxbury silt loam, channeled, frequently flooded	0.6%	0.9	5w	5w	49
●	2540	Bogue-Armo complex, 5 to 25 percent slopes	0.2%	0.2	6e	6e	37.5