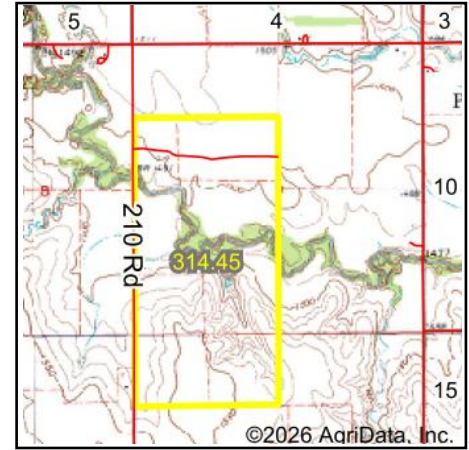
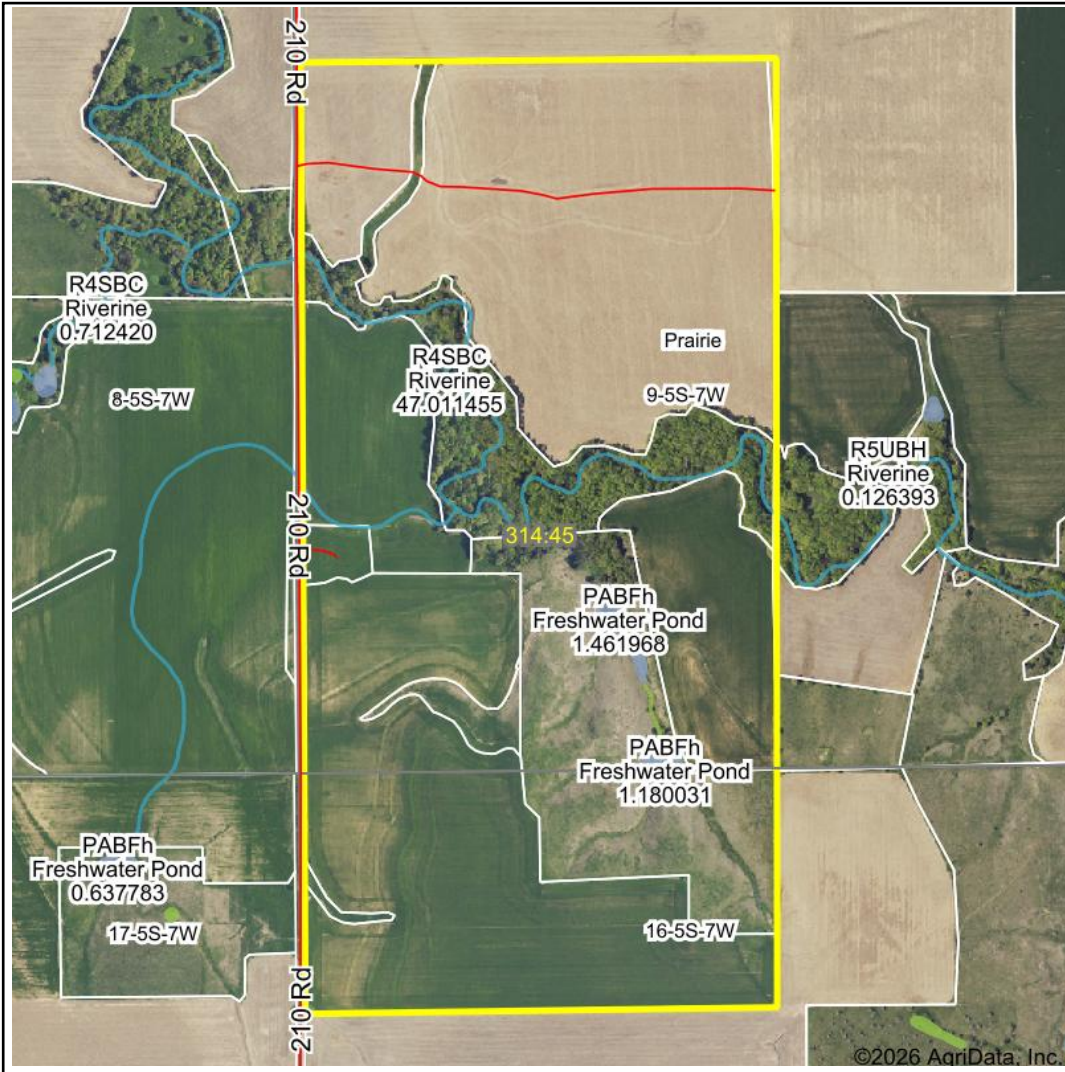


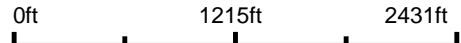
Wetlands Map



State: Kansas
Location: 9-5S-7W
County: Jewell
Township: Prairie
Date: 2/1/2026



Maps Provided By:
surety
CUSTOMIZED ONLINE MAPPING
© AgriData, Inc. 2025 www.AgriDataInc.com



Classification Code	Type	Acres
R4SBC	Riverine	2.97
PABFh	Freshwater Pond	2.64
PEM1Ch	Freshwater Emergent Wetland	0.17
Total Acres		5.78

Data Source: National Wetlands Inventory website. U.S. DoI, Fish and Wildlife Service, Washington, D.C. <http://www.fws.gov/wetlands/>