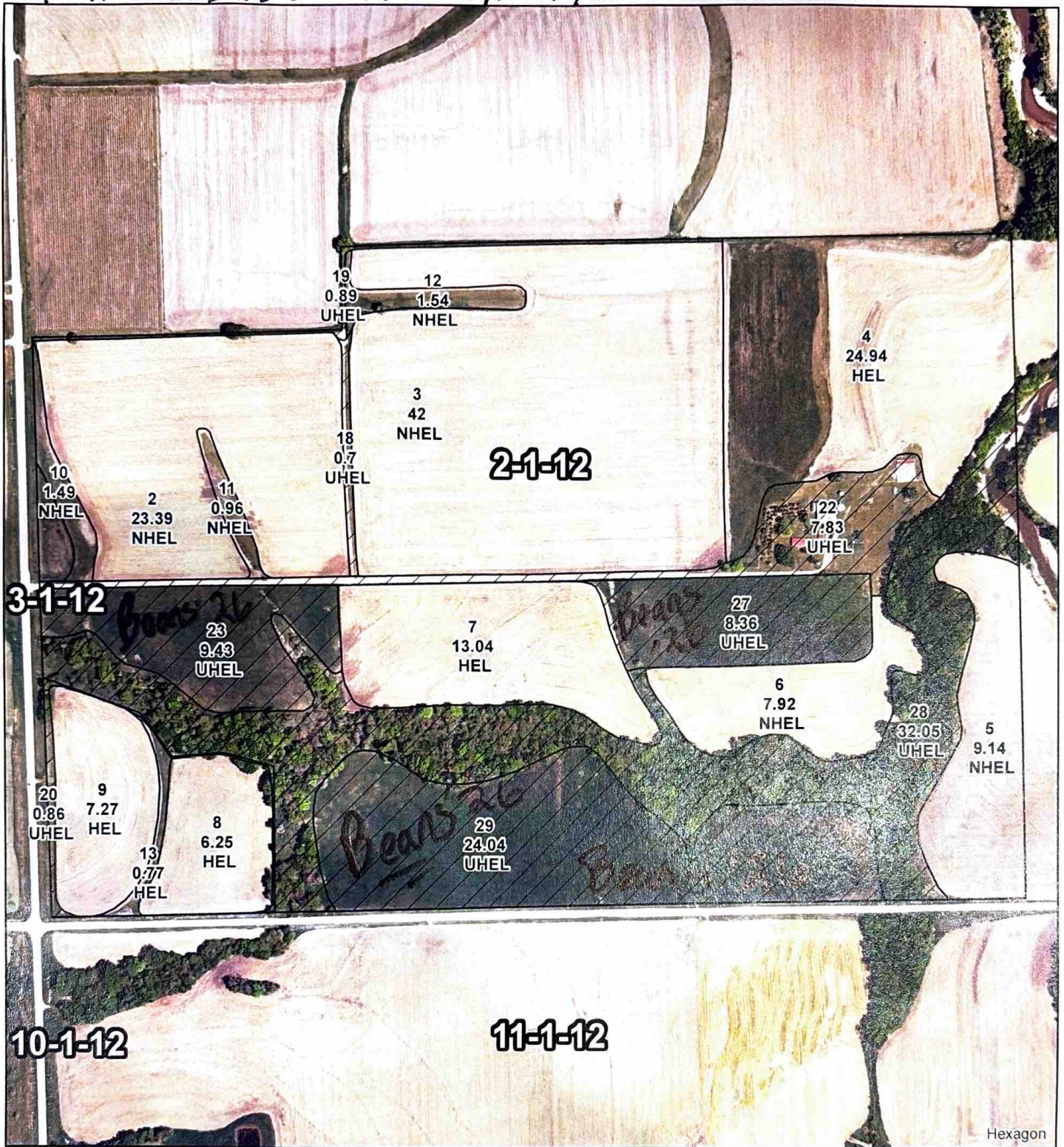


\* 41.83<sup>±</sup> acres was converted to cropland (Soybeans) for 2026.



United States Department of Agriculture  
Farm Service Agency

March 24, 2026

Farm: 1805  
Tract: 2023

**Nemaha County, KS**

1:6,446

\*Unless noted on field, all corn is Yellow; Grain Sorghum/Milo is Grain; Oats are Spring; Soybeans are Common; Sunflowers are Oil; and Wheat is Hard Red Winter. These crops have Intended Use of Grain (GR) and Irrigated Practice of Non-irrigated (NI) unless otherwise noted on the map.

Disclaimer: Wetland identifiers do not represent the size, shape or specific determination of the area. Refer to your original determination CPA-026 and attached maps) for exact wetland boundaries and determinations, or contact NRCS.

Grass/SMO/FG \_\_\_\_\_  
Grass/SMO/GZ \_\_\_\_\_  
Grass/SMO/LS \_\_\_\_\_

Grass/NAG/FG \_\_\_\_\_  
Grass/NAG/GZ \_\_\_\_\_  
Grass/NAG/LS \_\_\_\_\_